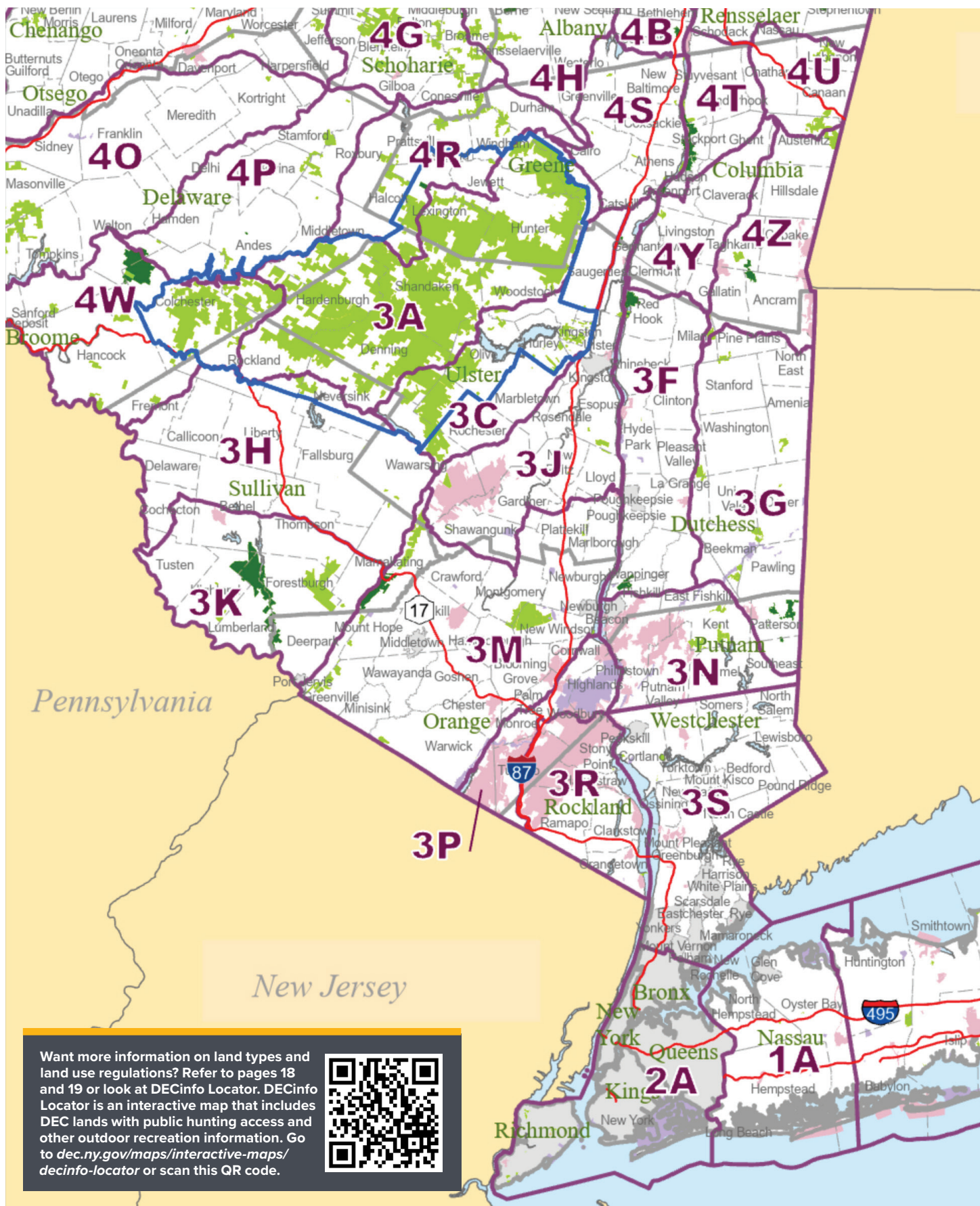


# Regional Maps



## WMA Accessible Features for Regions 1 and 3

### Suffolk

#### Otis Pike Preserve (Riverhead, Brookhaven)

- Parking, blind

#### Randall Pond, Ridge Conservation Area (Ridge)

- Parking, fishing access, permit station, viewing area, viewing platform, 2.1 mi foot trails, restroom

### Sullivan/Orange

#### Bashkill WMA (Mamakating, Deerpark)

- Parking, blind, fishing access

#### Mongaup Valley WMA (Forestburgh, Highland, Lumberland, Deerpark)

- Parking, eagle blind, restroom

\* CP-3 - Motorized Access Program for People with Disabilities. Go to [dec.ny.gov/places-to-go/accessible-recreation/mappwd](http://dec.ny.gov/places-to-go/accessible-recreation/mappwd) for application instructions and forms.



## Did you know, in 2024 DEC Forest Rangers

- Patrolled 30,781 miles of trails by foot,
- Patrolled 2,034 miles of interior boundary line,
- Participated in 417 public outreach events,
- Conducted 362 search and rescue missions.

[dec.ny.gov/environmental-protection/public-safety/forest-rangers](http://dec.ny.gov/environmental-protection/public-safety/forest-rangers)

1-833-NYS-RANGERS (1-833-697-7264)



### PROTECT YOUR WATERS

**Clean. Drain. Dry.**  
Boating and Fishing Equipment

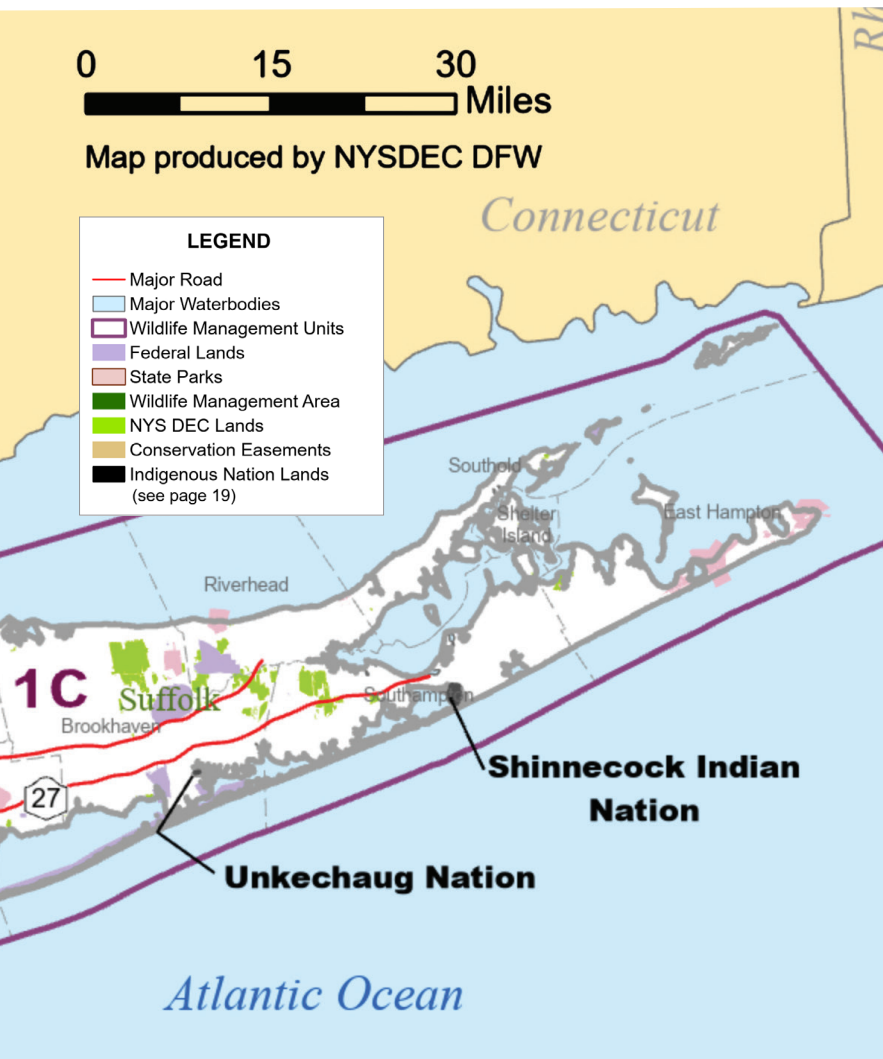


0 15 30 Miles

Map produced by NYSDEC DFW

### LEGEND

- Major Road
- Major Waterbodies
- Wildlife Management Units
- Federal Lands
- State Parks
- Wildlife Management Area
- NYS DEC Lands
- Conservation Easements
- Indigenous Nation Lands (see page 19)



## 10 HIKING ESSENTIALS

Carry these essentials on all hikes for a safe and enjoyable experience.

- 1 NAVIGATION** – map, compass, GPS system, extra batteries
- 2 INSULATION** – waterproof/windproof jacket, hat, gloves, thermals, wool socks. Pack extra in case you get wet.
- 3 LIGHT** – headlamp, flashlight, lanterns, extra batteries
- 4 FIRST-AID SUPPLIES** – use a pre-made kit or build your own.
- 5 EMERGENCY KIT** – whistle, signal mirror, duct tape, pocket knife/multi-tool, etc.
- 6 FIRE** – matches in waterproof container, lighter, fire starters
- 7 NUTRITION** – choose high-protein and high-calorie items, and be sure to pack extra food.
- 8 WATER** – carry more than you think you need and a water filtration system.
- 9 SUN PROTECTION** – sunglasses, sunscreen, hat
- 10 EMERGENCY SHELTER** – tent, space blanket, tarp

★ CARRY OUT WHAT YOU CARRY IN!



Department of  
Environmental  
Conservation

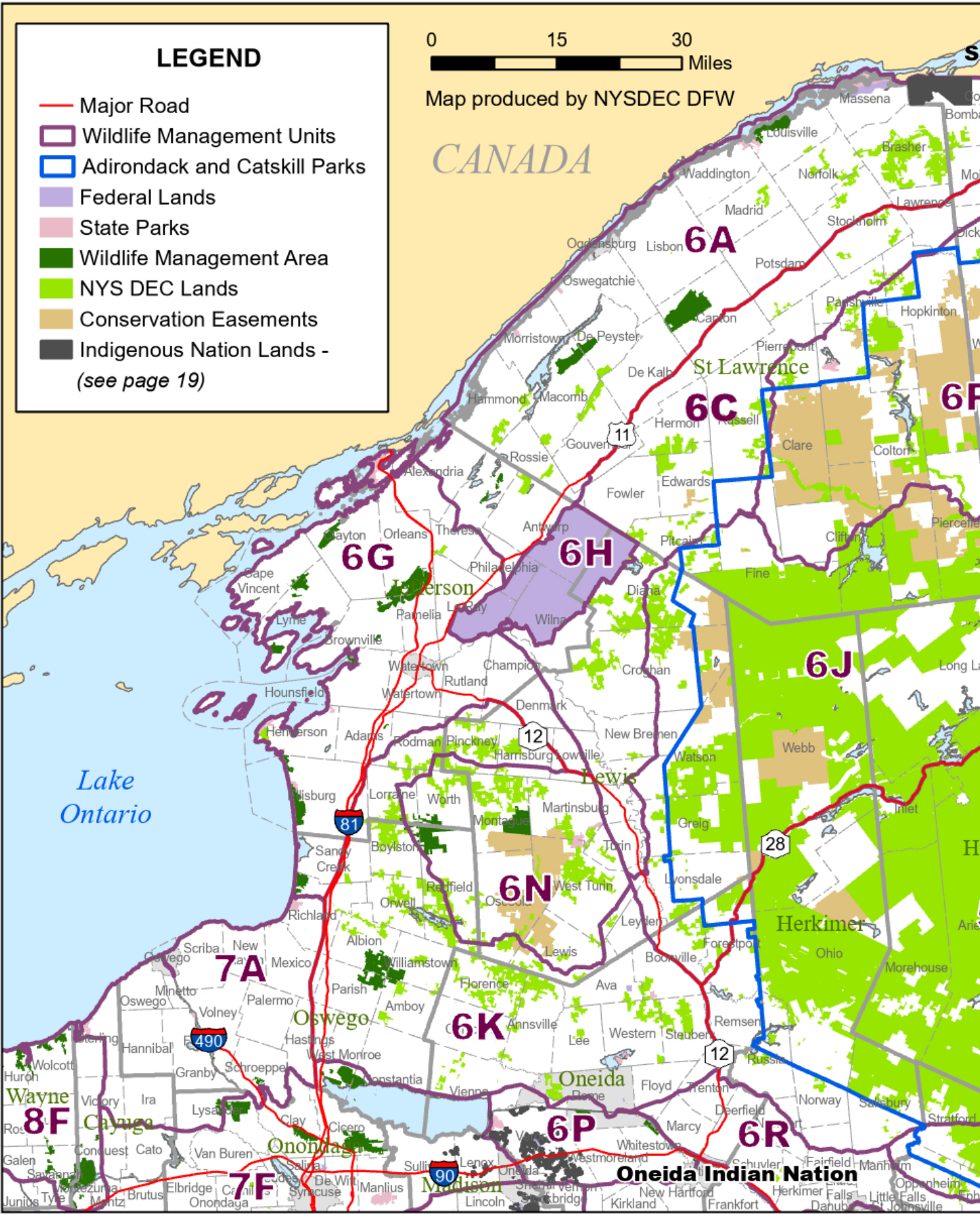


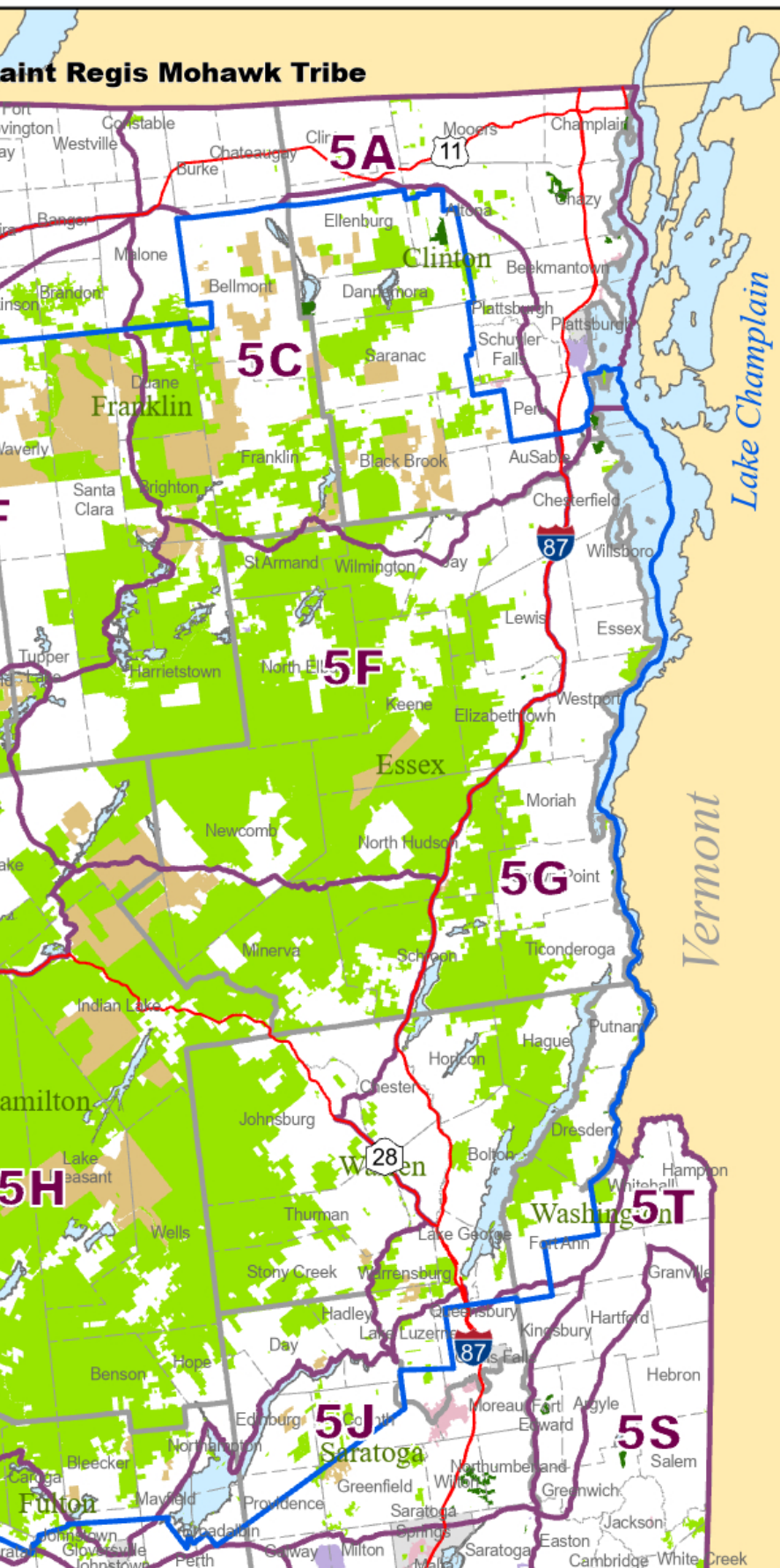
IN AN EMERGENCY, CALL: 911

833-NYS-RANGERS (833-697-7264)  
<http://on.ny.gov/NYSForestRangerRoster>  
Cell service not available in all areas.



# Regional Maps





## WMA Accessible Features for Regions 5 and 6

Clinton
<b>Ausable Marsh WMA (Peru)</b>
• Parking, viewing platform
<b>Kings Bay WMA (Champlain)</b>
• Parking, 150 ft path, viewing platform
<b>Lake Alice WMA (Chazy)</b>
• Parking, 2 blinds, fishing access, nature trail, 0.4 mi CP-3 trail*
Essex
<b>Wickham Marsh WMA (Chesterfield)</b>
• Parking, viewing platform, 0.1 mi foot path
Jefferson
<b>Ashland Flats WMA (Lyme)</b>
• Parking, observation tower
<b>Black Pond WMA (Ellisburg)</b>
• Parking, fishing platform, viewing platform, 0.3 mi foot trail, 0.88 mi CP-3 trail*
<b>French Creek WMA</b>
• Parking
<b>Lakeview WMA (Ellisburg)</b>
• Parking, fishing platform, 0.6 mi foot trails, restroom
Lewis
<b>Tug Hill WMA</b>
• Parking
Oneida
<b>Oriskany Flats WMA (Rome)</b>
• 1.16 mi CP-3 trail
Saratoga
<b>Saratoga Sand Plains WMA Archery Range (Wilton)</b>
• Parking, path
St. Lawrence
<b>Upper &amp; Lower Lakes WMA (Canton)</b>
• Parking, portable blind pads, 0.5 mi foot trails, viewing area
<b>Wilson Hill WMA (Louisville)</b>
• Parking, blind, boardwalk, viewing platform, 1.2 mi foot trails
Washington
<b>Carters Pond WMA (Greenwich)</b>
• Parking, viewing platform, 0.2 mi foot trail
<b>East Bay WMA (Whitehall)</b>
• Parking, 0.1 mi path, viewing platform
<b>Washington Co. Grasslands WMA (Fort Edward)</b>
• Parking, viewing platform

\* CP-3 - Motorized Access Program for People with Disabilities. Go to [dec.ny.gov/places-to-go/accessible-recreation/mappwd](http://dec.ny.gov/places-to-go/accessible-recreation/mappwd) for application instructions and forms.

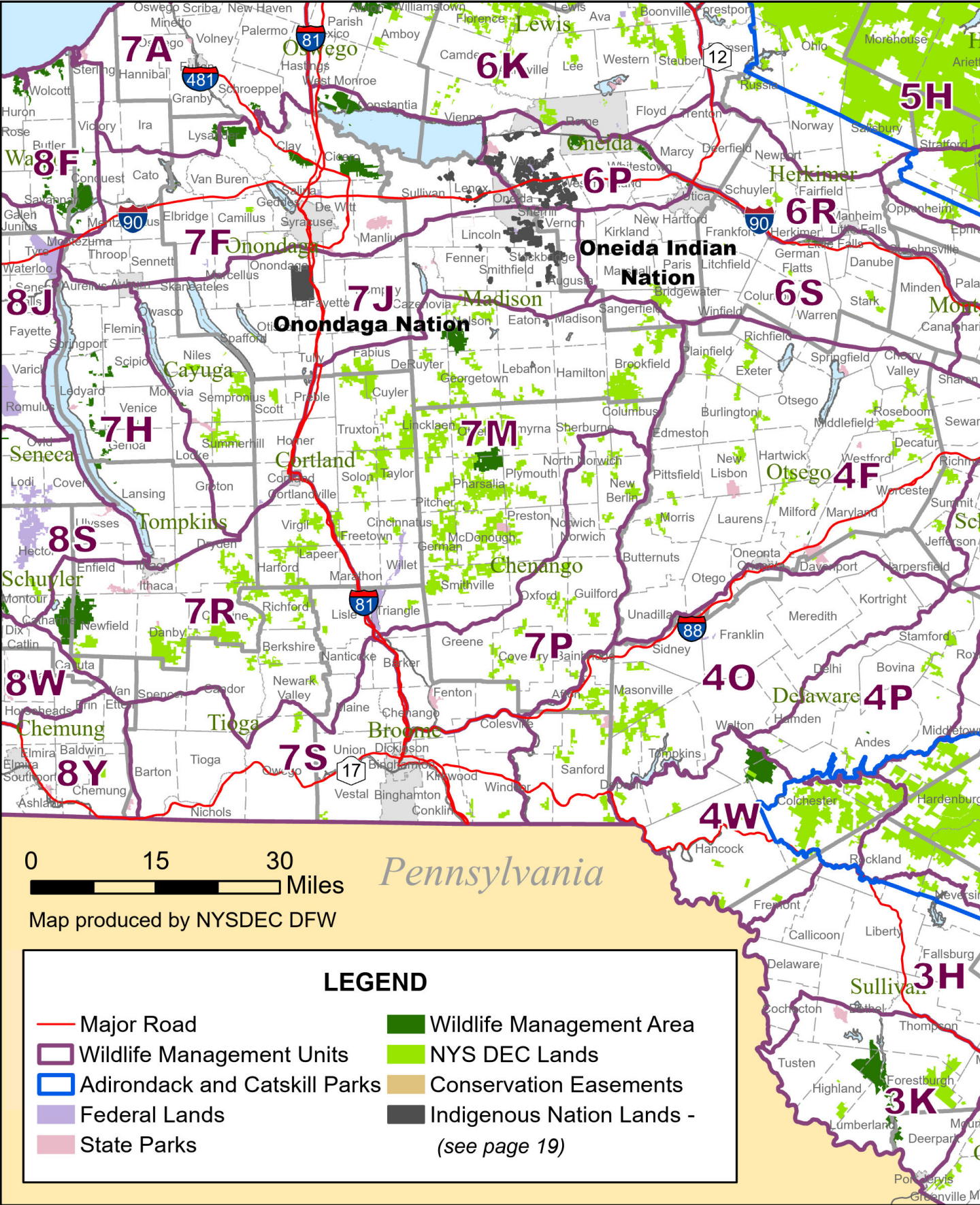
## Conservation Easements

Public hunting and trapping is allowed on the conservation easements shown on these maps, but because rules and regulations are different for each conservation easement, members of the public wishing to hunt or trap on a particular easement property are strongly encouraged to contact the local DEC office (see page 6) before planning a trip.

For more information on conservation easements, visit: [dec.ny.gov/nature/forests-trees/conservation-easements](http://dec.ny.gov/nature/forests-trees/conservation-easements).

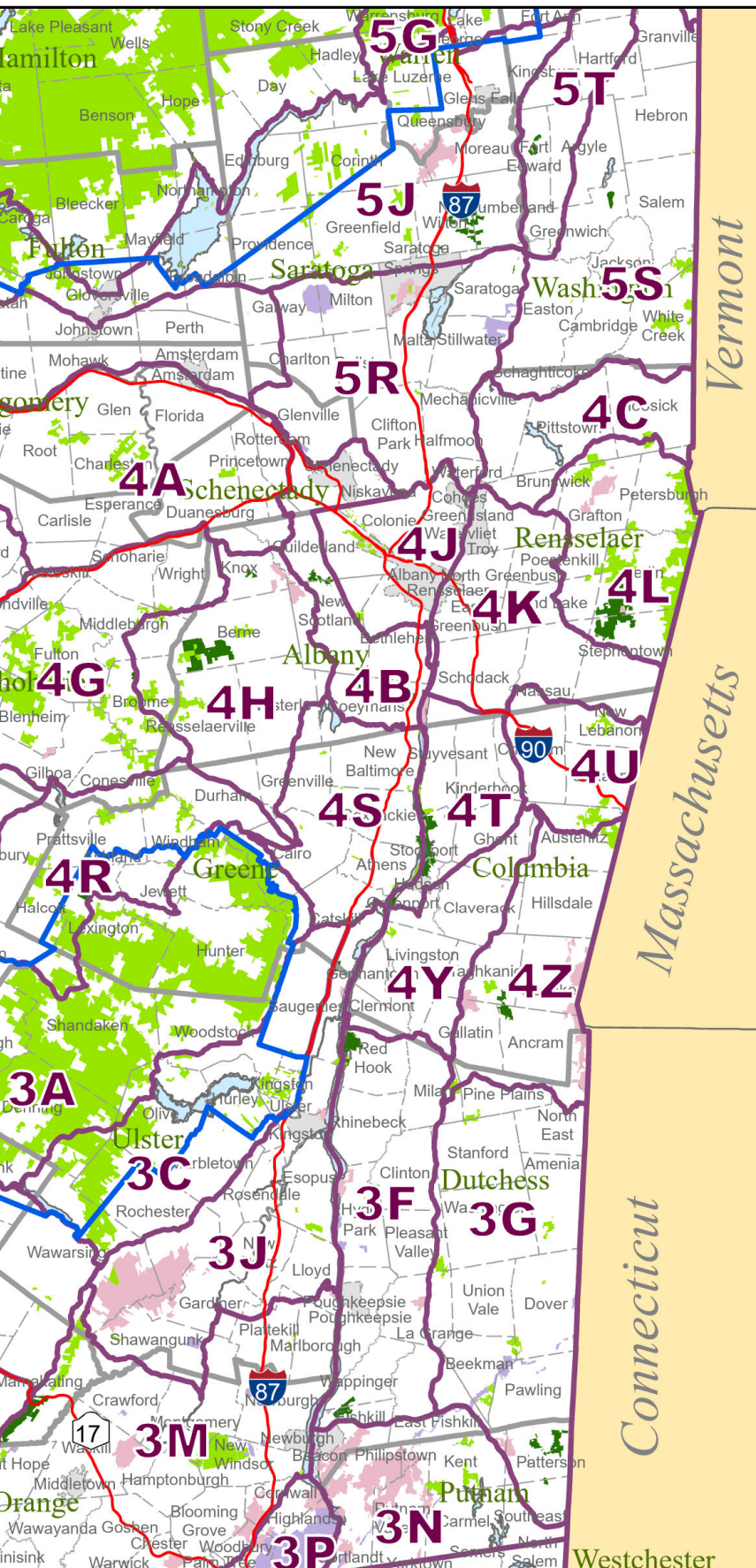


# Regional Maps





# Regional Maps



## WMA Accessible Features for Regions 4 and 7

Albany
<b>Partridge Run WMA (Berne)</b>
• Parking, observation tower/ADA trail, CP-3 trails*
Delaware
<b>Bear Spring Mountain WMA (Walton)</b>
• CP-3 trails*
Greene
<b>Vosburgh Swamp WMA (Coxsackie, Athens)</b>
• Parking, boardwalk, waterfowl hunting/viewing blind
Onondaga
<b>Hamlin Marsh WMA (Clay)</b>
• Parking, boardwalk, blind, viewing platform, 0.1 mi foot path
<b>Three Rivers WMA (Lysander)</b>
• Parking, viewing platform, 0.2 mi gravel foot path to hunting blind
Oswego
<b>Deer Creek Marsh WMA (Richland)</b>
• Parking, 0.1 mi foot path
Rensselaer
<b>Capital District WMA (Stephentown and Berlin)</b>
• CP-3 trails*
Schoharie
<b>Franklinton Vlaie WMA (Broome)</b>
• Parking, viewing pavilion, fishing/viewing access

## FIREWOOD WARNING

Your firewood may be hiding invasive pests that are killing our trees and forever changing the forests we love. Protect our trees.

### Buy Local, Burn Local.

- It is illegal to bring untreated\* firewood into New York State
- It is illegal to transport untreated firewood more than 50 miles from its source or origin
- When transporting firewood, you must carry proof of source (receipt from a vendor), origin (self-issued certificate from DEC website), or treatment (label showing treatment method)

\* Treated firewood has been heated to 160°F for 75 minutes to eliminate pests living inside the wood. Treated firewood can be moved without restriction.

**Failure to follow these regulations may result in a ticket.**

For questions, call toll-free:

**1-866-640-0652**

State and federal quarantines exist that further restrict the movement of firewood. For more information, visit [www.dec.ny.gov](http://www.dec.ny.gov) and search for "invasive insects".



Department of  
Environmental  
Conservation



**What's lurking in  
your firewood?**

ASIAN LONGHORNED  
BEETLE

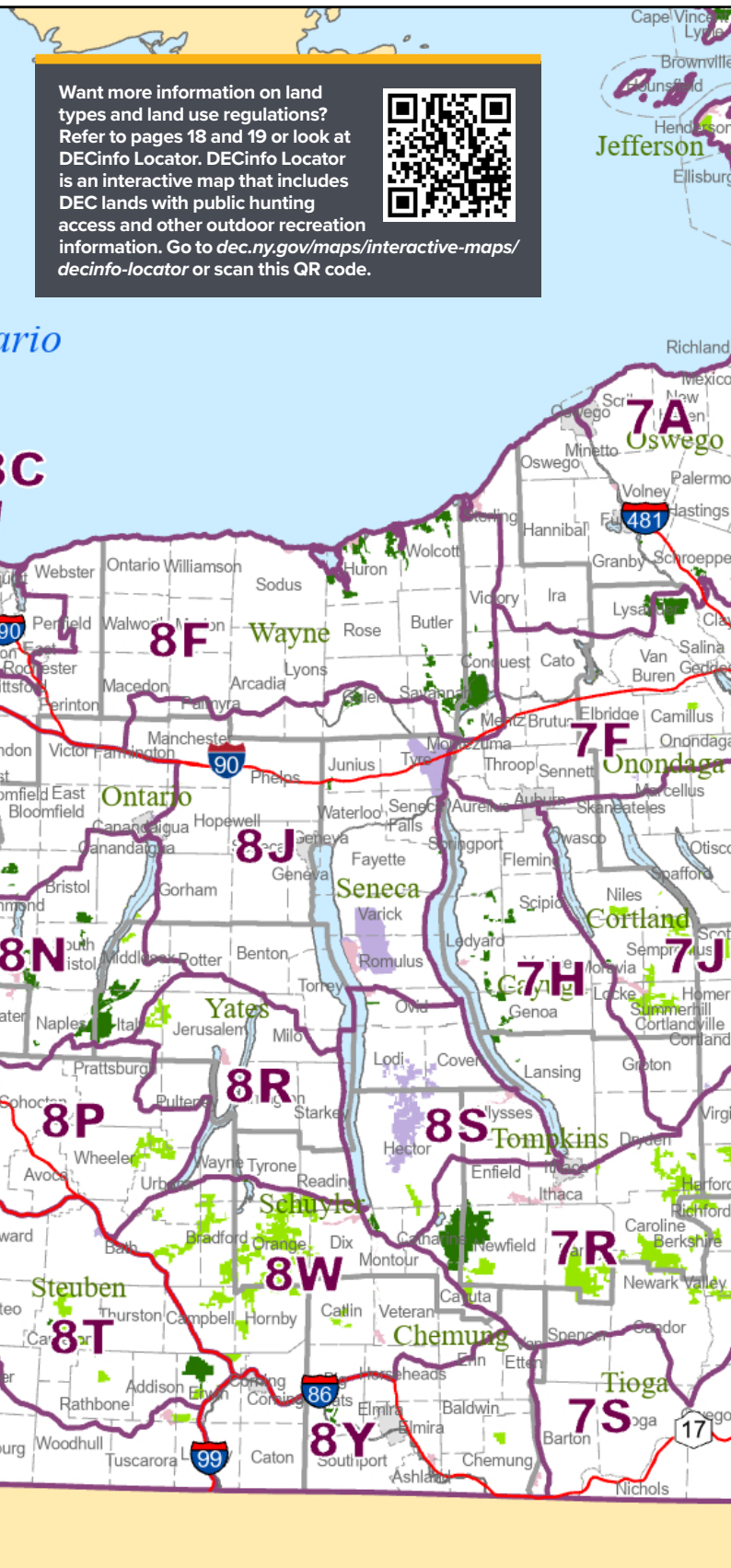
EMERALD  
ASH BORER



## Regional Maps



Want more information on land types and land use regulations? Refer to pages 18 and 19 or look at DECinfo Locator. DECinfo Locator is an interactive map that includes DEC lands with public hunting access and other outdoor recreation information. Go to [dec.ny.gov/maps/interactive-maps/decinfo-locator](http://dec.ny.gov/maps/interactive-maps/decinfo-locator) or scan this QR code.



## WMA Accessible Features for Regions 8 and 9

Allegany
<b>Hanging Bog WMA (New Hudson)</b>
• 0.14 mi CP-3 trail*
Cattaraugus
<b>Birch Run Ponds FWMA (Allegany)</b>
• Parking, fishing access, 0.3 mi foot trail, seasonal restroom
Cayuga/Wayne/Seneca
<b>Northern Montezuma WMA (Victory, Conquest, Mentz, Montezuma, Butler, Savannah, Seneca Falls)</b>
• Parking, viewing platform, 1.4 mi foot trails, restroom
Chautauqua
<b>Chautauqua Lake FWMA (Ellery, North Harmony)</b>
• At Stow Farm: parking, blind/viewing platform, 0.2 mi foot trail
<b>Watts Flats (Harmony)</b>
• Parking, viewing platform
Erie
<b>Spicer Creek WMA (Grand Island)</b>
• Parking, 2 blinds, 0.4 mi foot trail
Genesee
<b>John White WMA (Alabama)</b>
• Parking, blind, 0.62 mi CP-3 trail*
Livingston
<b>Conesus Inlet WMA (Conesus)</b>
• Parking, 0.1 mi foot trail, viewing area, 1 mi CP-3 trail*
Livingston/Allegany
<b>Rattlesnake Hill WMA (Nunda, Ossian, Grove)</b>
• Parking, viewing platform, 9.3 mi CP-3 trails*
Monroe
<b>Braddock Bay WMA (Parma, Greece)</b>
• Parking, fishing access, viewing platform, kayak launch
Ontario
<b>Honeoye Creek WMA (Richmond)</b>
• 2.8 mi CP-3 trails*
Ontario/Yates
<b>High Tor WMA (Naples, Italy Middlesex)</b>
• Parking, fishing access, hand launch, 8.4 mi CP-3 trails*
Orleans/Erie/Niagara/Genesee
<b>Tonawanda WMA (Shelby, Newstead, Royalton, Alabama)</b>
• Parking, blind, 0.16 mi foot trail
Orleans/Genesee
<b>Oak Orchard WMA (Barre, Shelby, Oakfield, Alabama)</b>
• Parking, viewing platform, pavilion, 0.14 mi foot trails, 3.2 mi CP-3 trails*
Schuyler
<b>Catharine Creek WMA (Dix, Montour)</b>
• 2 mi CP-3 trails*
<b>Waneta-Lamoka WMA (Tyrone)</b>
• Parking, hand launch
Steuben
<b>Erwin WMA (Erwin)</b>
• Parking, 5.38 mi CP-3 trails*
Wayne
<b>Galen WMA (Galen)</b>
• 2.2 mi CP-3 trails*
<b>Lake Shore Marshes WMA (Rochester, Oswego)</b>
• Parking, fishing access, hand launch, seasonal restroom
Wyoming
<b>Carlton Hill MUA (Middlebury)</b>
• 0.6 mi CP-3 trails*

\* CP-3 - Motorized Access Program for People with Disabilities. Go to [dec.ny.gov/places-to-go/accessible-recreation/mappwd](http://dec.ny.gov/places-to-go/accessible-recreation/mappwd) for application instructions and forms.