

2023-2024

NEVADA



BIG GAME

SEASONS AND APPLICATIONS

**APPLICATION
DEADLINE:**
MAY 10 AT 11 PM PST

**DRAW RESULTS
RELEASED:**
ON OR BEFORE MAY 19



- » Important 2023 Hunting Season Information. Page 9
- » 2023 Big Game Seasons and Tag Quotas. Page 10

Submit online applications at: ndowlicensing.com

For application questions call: 1-855-542-6369



**SIMPLE
MODERN
CONVENIENT**



GET ONLINE GET OUTSIDE

www.ndowlicensing.com



FISHING
HUNTING
BOATING

Buying your hunting and fishing license or registering your boat has never been easier with NDOW's streamlined licensing website.

Fishing, hunting or combination licenses are valid for one year from the date of purchase.

NEVADA BIG GAME

SEASONS AND APPLICATIONS

CONTENTS

| | |
|---|----|
| Director's Message..... | 2 |
| Department of Wildlife Offices | 3 |
| Hunting Licenses and Tag Fees | 4 |
| Online Application Instructions..... | 6 |
| New Regulations: Keep Up To Date..... | 8 |
| Important Information for 2023 | 9 |
| Eligibility Information | 10 |
| Big Game Seasons..... | 10 |
| Antelope | 11 |
| Bighorn Sheep [Nelson (Desert), California, and Rocky Mountain]..... | 14 |
| Mountain Goat..... | 16 |
| Elk..... | 16 |
| Mule Deer | 20 |
| Mountain Lion / Black Bear | 26 |
| Silver State Tags Information..... | 29 |
| Partnership in Wildlife (PIW) Hunts..... | 29 |
| 2023 Big Game Application, Deadline and Remaining Tags | 32 |
| Big Game Application Eligibility..... | 34 |
| General Provisions..... | 36 |
| Special Regulations..... | 42 |
| General Regulations..... | 45 |
| Commonly Asked Call Center Questions..... | 46 |

STATE OF NEVADA

Joe Lombardo, **Governor**

STATE BOARD OF WILDLIFE COMMISSIONERS

Tommy Caviglia - **Chair**

Shane Rogers - **Vice Chair**

Tom Barnes, Tiffany East, Casey Kiel, David McNinch,
Mario Walther, Alana Wise, Eddie Booth.

NEVADA DEPARTMENT OF WILDLIFE

Alan Jenne, **Director**

Mike Scott, **Deputy Director**

Jordan Goshert, **Deputy Director**

Vacant, **Game Division Administrator**

Chris Vasey, **Conservation Education Division Administrator**

Kim Munoz, **Data and Technology Services Division Administrator**

Vacant, **Chief Game Warden**

Advertising in this publication lowers production costs. NDOW does not benefit financially from the advertising in this or any other NDOW publication.

NOTE:

Changes to regulations are marked in **blue, bold italics**.

Individuals with hearing impairments may contact the Department at 775-688-1500 via a text telephone (TTY) telecommunications device by first calling the State of Nevada Relay Operator at 1-800-326-6868. This publication will be made available in an alternative format upon request.

DIRECTOR'S MESSAGE



The end of bird season and the thaw of this winter's once welcomed snow means it's time for the 2023 big game application period. As I look over this Big Game Seasons and Applications book as the newly appointed Director, I can't help but reflect on all the hard work it takes to provide these opportunities outlined in this publication. I know that behind each and every quota there are countless hours of work from dedicated Nevada Department of Wildlife staff, County Advisory Boards, Board of Wildlife Commissioners and conservation organizations who brought their energy, passion and purpose to ensure the future of Nevada's wildlife legacy.

If you live in Nevada, or have hunted here before, you already know what great opportunities exist in the Silver State. However, if you haven't experienced our state and its incredible open spaces and amazing wildlife, I invite you to check out both this book and our website (ndow.org) to learn what you've been missing. Nevada provides incredible big game hunting opportunities for deer, elk, bear, pronghorn antelope, mountain goat and bighorn sheep. In fact, it is possible to draw multiple tags!

As you read this Big Game Seasons and Applications book, we want you to be aware that it is meant to be your quick reference to applying for Nevada big game tags. It includes season dates, quotas and processes that every sportsman needs to know before submitting their big game application. However, this publication contains only brief explanations of the hunting laws in this state. We recommend checking out our website (ndow.org) or calling your local NDOW office if you have any questions.

I wish you all the best of luck with your hunt choices and hope that you consider bringing your wildlife passion beyond your application and into the field. Nevada's wildlife can always use your support in any manner you can provide. From donations or membership in a sportsmen's organization, volunteering on wildlife projects, or being part of the County Advisory Board and Wildlife Commission public input process, there is opportunity for all to support Nevada's wildlife. For more information please visit our volunteer page at <https://www.ndow.org/learn-discover/get-involved/>.

Sincerely,

Alan Jenne – Director, Nevada Department of Wildlife



EST. 2004
J.F. GRIFFIN
PUBLISHING

Williamstown, MA | Birmingham, AL

About This Book

This high-quality guide is offered to you by the Nevada Department of Wildlife through its unique partnership with J.F. Griffin Publishing, LLC.

The revenue generated through ad sales significantly lowers production costs and generates savings. These savings translate into additional funds for other important agency programs.

If you have any feedback or are interested in advertising, please contact us at 413.884.1001 or at www.JFGriffin.com

Graphic Design:

Jon Gulley, Dane Ray,
Evelyn Haddad, Chris Sobolowski



This guide is also
available online at

eRegulations.com

DEPARTMENT OF WILDLIFE REGIONAL OFFICES

WESTERN REGION OFFICE

1100 Valley Rd.
Reno, NV 89512
(775) 688-1506

EASTERN REGION OFFICE

60 Youth Center Rd.
Elko, NV 89801
(775) 777-2300

SOUTHERN REGION OFFICE

3373 Pepper Lane
Las Vegas, NV 89120
(702) 486-5127

ELY OFFICE

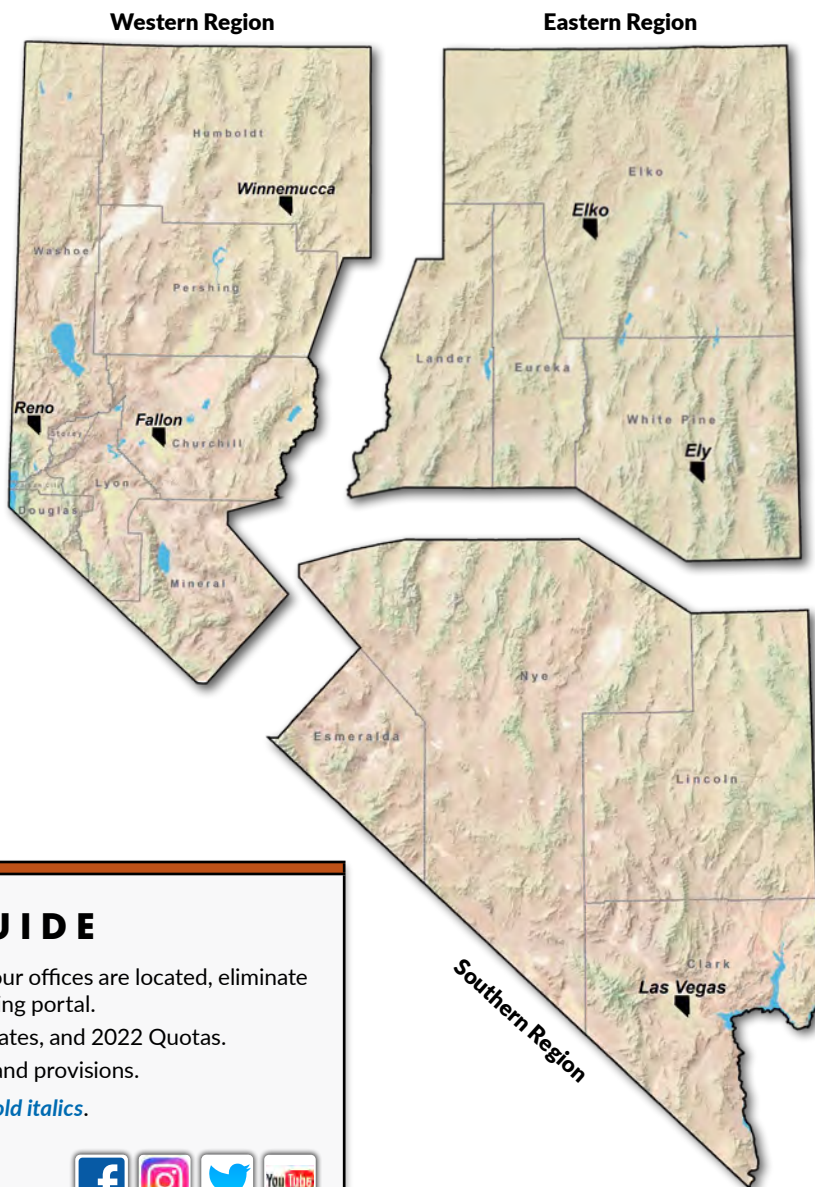
1218 N. Alpha St.
Ely, NV 89301
Phone: (775) 289-1655 ext. 21
(Hours subject to change, please call ahead.)

FALLON OFFICE

380 West B. St.
Fallon, NV 89406
(775) 423-3171
(Hours subject to change, please call ahead.)

WINNEMUCCA OFFICE

705 E. Fourth St., Bldg. A
Winnemucca, NV 89445
(775) 623-6565
(Hours subject to change, please call ahead.)



HOW TO USE THIS GUIDE

1. The first part of the guide is to help clarify where our offices are located, eliminate tag draw confusion, and helpful steps to our licensing portal.
2. The center has our big game hunts listed, season dates, and 2022 Quotas.
3. The back of the book has definitions, regulations, and provisions.

NOTE: Changes to regulations are marked in *blue, bold italics*.

Thanks for reading! Still want more?

Visit ndow.org or follow us on social media!



This publication receives funding through the Federal Aid in Wildlife Restoration program as educational material. Federal Laws prohibit discrimination on the basis of race, color, national origin, age, disability, and sex. If you believe you have been discriminated against in any NDOW program, activity, or facility, please write to the following:

Director
Nevada Department of Wildlife
6980 Sierra Center Parkway,
Suite 120
Reno, NV 89511

U.S. Fish and Wildlife Service
Diversity Program Manager
4401 North Fairfax Drive,
MS: 7072-43
Arlington, VA 22203



This regulation brochure contains only a synopsis of the hunting laws for the State of Nevada. Complete text of the laws and regulations may be obtained by contacting the Nevada Department of Wildlife or by checking our website at ndow.org.

NEVADA HUNTING

LICENSE AND TAG FEES

(NRS 502.240/NRS 502.250)

Purchase your license at ndowlicensing.com. Prices listed do not include a \$1 processing fee that will be added at time of purchase.

RESIDENT

HUNTING LICENSES

| LICENSE | FEES |
|--|------|
| COMBINATION HUNTING & FISHING | |
| Adult Combination – 18 years of age and older | \$75 |
| Youth Combination – 12-17 years of age | \$15 |
| Adult Hunting – 18 years of age and older | \$38 |
| Apprentice Hunting License – 12 years of age and older (Available only at NDOW offices) | \$15 |

SPECIALTY COMBINATION (VERIFICATION REQUIRED)

| | |
|---|------|
| Senior Specialty Combination – At least 65 years of age and six months residence in Nevada | \$15 |
| Serviceman Specialty Combination | \$15 |
| Severely Disabled Specialty Combination | \$15 |
| Disabled Veteran Specialty Combination | \$15 |
| Native American Specialty Combination | \$10 |

NONRESIDENT

HUNTING LICENSES

| LICENSE | FEES |
|--|-------|
| COMBINATION HUNTING & FISHING | |
| Adult Combination – 18 years of age and older | \$155 |
| Youth Combination – 12-17 years of age | \$15 |
| Apprentice Hunting License – 12 years of age and older (Available only at NDOW offices) | \$15 |
| 1-Day Combination Permit to Fish & Hunt Upland Game and Waterfowl – 18 years of age and older | \$23 |
| Consecutive Day | \$8 |

TAG FEES

In Nevada big game seasons are established for antelope, black bear, deer, elk, bighorn sheep, mountain goat, and mountain lion. Tags for all game species, except mountain lion, are awarded through a random, computerized tag draw process held in late May. Mountain lion tags are available over the counter at Nevada license agents, online at ndowlicensing.com, and at Department offices statewide. Mountain lion season is open year-round.

| TAGS/OTHER FEES | FEES |
|---|------|
| APPLICATION FEES (NONREFUNDABLE) | |
| Silver State | \$20 |
| Partnership In Wildlife (in addition to regular application fee) | \$10 |
| All other big game tags (except mountain lion) | \$10 |
| Elk management (per elk hunt application) | \$5 |
| Predator (per application) | \$3 |
| Bonus point only application (exempt from elk management and predator fees) | \$10 |
| Processing (per application) | \$1 |

RESIDENT TAGS

| | |
|--------------------------|-------|
| Deer Tag | \$30 |
| Antelope Tag | \$60 |
| Black Bear Tag | \$100 |
| Bighorn Sheep Tag | \$120 |
| Elk Tag | \$120 |
| Mountain Goat Tag | \$120 |
| Mountain Lion Tag | \$29 |

NONRESIDENT TAGS

| | |
|---------------------------|---------|
| Deer Tag | \$240 |
| Antelope Tag | \$300 |
| Black Bear Tag | \$300 |
| Bighorn Sheep Tag | \$1,200 |
| Antlered Elk Tag | \$1,200 |
| Antlerless Elk Tag | \$500 |
| Mountain Goat Tag | \$1,200 |
| Mountain Lion Tag | \$104 |

DUPLICATE

| | |
|----------------------|------|
| Duplicate Tag | \$10 |
|----------------------|------|



QUALIFICATIONS FOR RESIDENT LICENSES, TAGS AND PERMITS

A person is considered to be a resident of the State of Nevada if: The person is a citizen of, or is lawfully entitled to remain in, the United States; and during the 6 months next preceding the person's application to the Department for a license, tag or permit, the person: (1) Maintained his or her principal and permanent residence in this State; (2) Was physically present in this State, except for temporary absences; and (3) Did not purchase or apply for any hunting, fishing or trapping privilege or entitlement conditional upon residency from another state, country or province.

A person who does not maintain his or her principal and permanent residence in Nevada but who is attending an institution of higher learning in this State as a full-time student is eligible for a resident license, tag or permit if, during the 6 months next preceding the person's application to the Department for a license, tag or permit, the person: (a) Was physically present in Nevada, except for temporary trips outside of the State; and (b) Did not purchase or apply for any hunting, fishing or trapping privilege or entitlement conditional upon residency from another state, country or province.

A resident license, tag or permit issued by this State is void if the person to whom it was issued establishes or maintains his or her principal and permanent residence in and obtains any hunting, fishing or trapping privilege or entitlement conditional on residency from another state, country or province.

Principal and permanent residence means a place where a person is legally domiciled and maintains a permanent habitation in which the person lives and to which the person intends to return when he or she leaves the state in which the permanent habitation is located. The term does not include merely owning a residence in a state. (NRS 502.015) Social Security Number Laws regarding child support mandate that any

person who is required by federal law to have a social security number must provide the number to obtain a business, occupational or recreational license. Federal Law – Public Law 104 – 193; Nevada Statute – NRS 502.063, 503.5833, 504.390.

MILITARY STATIONED IN NEVADA

Active members, permanently assigned to the state of Nevada and spouses and dependents, may obtain a fishing license at the same cost as Nevada residents. (Refer to NRS 502.070)



REPORT WILDLIFE CRIME NDOW TIP APP

- Remain anonymous
- Text the description, license plates, coordinates, upload photos and more
- Make direct and immediate contact with a Game Warden
- Send tips by texting NDOWTIP to 847411 or use the app

NDOW Tip is available to download for free via the Google Play Store, iTunes App Store, or by visiting the agency's website (www.ndow.org).



Android



Apple

**Scan here with
your smart
device to apply**



LOG INTO YOUR ACCOUNT

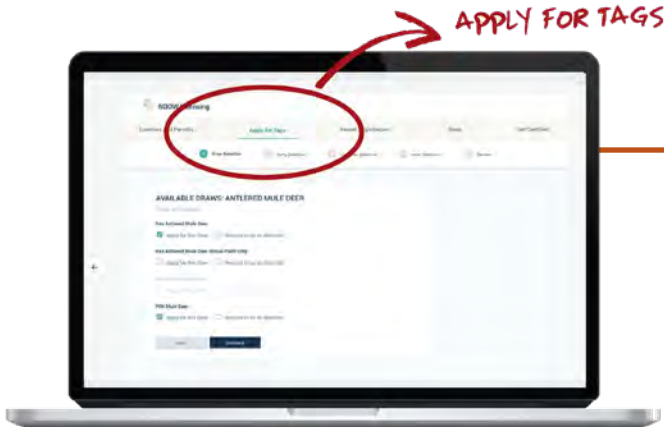
A screenshot of a laptop displaying the Nevada Department of Wildlife website. The page features a navigation bar with links for 'System Overview', 'General Registration', 'Apply for New Resident Scaled Deer', 'All Events', and 'Log Out'. The 'Log Out' link is circled in red. Below the navigation bar, the main content area has a header 'Get Online. Get Outside.' and a large image of a deer in a field. At the bottom, there are sections for 'The Nevada Department of Wildlife Licensing System' and 'TUTORIALS'.

ENTER YOUR USERNAME AND PASSWORD

The screenshot shows the Nevada Department of Wildlife website. The top navigation bar includes links for 'Home', 'About Us', 'Contact Us', 'Get Online', and 'Get Involved'. The 'Get Online' link is highlighted with a red arrow. The main content area features a 'Get Online' section with a red circle around the 'Get Online' button. Below this, there is a 'Get Involved' section with a red circle around the 'Get Involved' button. The bottom of the page has a 'Tutorials' section with a red circle around the 'Tutorials' button.

ACCESS YOUR ACCOUNT

The screenshot shows the Nevada Department of Public Safety's online portal. The page has a header with the Nevada Department of Public Safety logo and navigation links: "My Account", "Vehicle Registration", "Apply for Tags", "All Links", and "Get Help". The main content area is titled "MY ACCOUNT" and contains a list of links on the left: "Home", "Order History", "Payment Methods", "Vehicle Information", "License and Expiration", "Insurance", "Return Order and Refund", "Customer Accounts", "Applications and Fees", "About Us/Contact", "Accessibility", and "Account Settings". The "Vehicle Information" link is selected, and the page displays a form for "David M. 1761934". The form has three sections: "Personal Info", "Contact Info", and "Personal Details". The "Contact Info" section is highlighted with a red box, and a red arrow points to it from the left. The "Personal Details" section is also highlighted with a red box, and a red arrow points to it from the left. The "Contact Info" section contains fields for "Phone Number", "Email Address", and "Address". The "Personal Details" section contains fields for "Date of Birth", "Sex", "Race", "Height", "Weight", "Eye Color", "Hair Color", "Skin Color", "Blood Type", "Religion", "Marital Status", "Occupation", "Education", "Military Service", "Criminal Record", "Driving License", "Vehicle Information", and "Insurance".



STEP 4

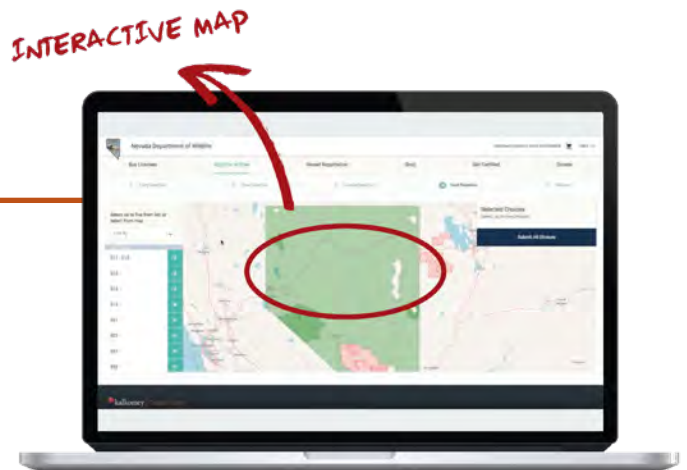
APPLY FOR TAGS

To apply for tags, click **"Apply for Tags"** at the top of the page. After declaring your residency, you will see all of the big game hunts you are eligible for.

STEP 5

SELECT YOUR HUNTS

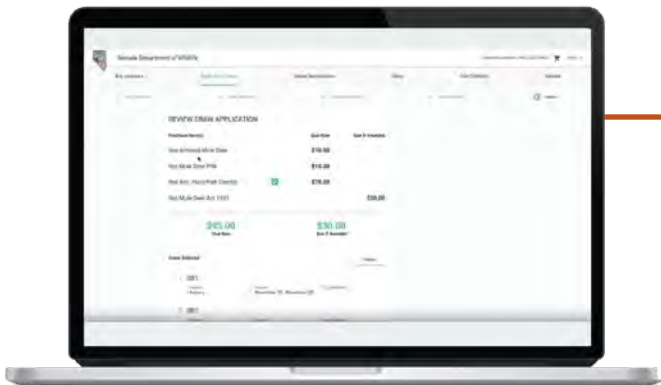
Once you select a hunt, use the interactive map to select up to five (5) choices for unit group, season, and weapon class. You can re-order your choices using the menu in the top-right corner of the map. When ready, click **"Submit All Choices"** to continue. You can also edit your choices at anytime until the application deadline.



STEP 6

SUBMIT YOUR APPLICATION

Review your application and ensure all choices are correct. You can click **"Back"** to edit your application, click **"Continue Shopping"** to apply for additional hunts, or click **"Checkout"** to begin the payment process.



During the application process, you will be able to apply as an individual or as a party with your friends and family for eligible hunts. Bonus Points are also available for purchase in place of applying for a hunt. If you have any questions or need assistance using the licensing system, please call 1-855-542-6369.

Good Luck and Hunt Safe!

ndowlicensing.com

NEW REGULATIONS

KEEP UP TO DATE

KNOW BEFORE YOU GO

In recent years, Nevada has adopted several new hunting regulations. Here are a few that you may not be aware of. Be sure to know before you go!

Keep in mind that these are simply synopsis of the laws. Visit leg.state.nv.us to read the Nevada Revised Statutes in their entirety. It is your responsibility to know and follow the law.

NONRESIDENT MOUNTAIN GOAT

Mountain goat will once again be offered as a hunt to non-residents. Any nonresident with existing mountain goat points will need to once again apply or purchase a bonus point in this application season or the next application season to keep their previously earned points.

SPIKE ELK

Spike elk means any antlered elk having not more than two antler points on either antler. (Refer to NAC 502/CGR 508)

TRAIL CAMERA

With certain exemptions, it is illegal to place, maintain, or use a trail camera on public land from August 1 - December 31 of each year. It is illegal to use a trail camera July 1 - December 31 of each year if the camera is capable of transmitting images, video, or location of wildlife. (Refer to NAC 502/CGR 440)

SHED ANTLERS

A person shall not take or gather shed antlers from or on any public land located in Elko, Eureka, Lander, Lincoln, Nye, or White Pine Counties at any time from January 1 - April 30. A shed antler collection certificate is required for collecting May 1 - June 30. NDOW offers a shed-hunting course, which can be accessed at ndow.org. It is unlawful to pick up antlers still attached to a skull (deadhead). (Refer to NAC 503/CGR 475)

THERMAL IMAGING/OPTICS

A person shall not possess or use electronic night-vision equipment, electronically enhanced light-gathering devices, thermal imaging devices, infrared night-vision equipment, or any other comparable equipment or device used to en-

hance night-vision while hunting or taking any game mammal or game bird or while locating game mammals or game birds for the purpose of hunting. This does not limit the use of a sight attached to a firearm, bow or crossbow that is powered by a battery contained within the sight, is illuminated by light gathering fiber optics, or uses a radioactive isotope such as a tritium. (Refer to NAC 503/CGR 492)

DRONE/UNMANNED AIRCRAFT

A person shall not, for the purpose of hunting and trapping, locate or observe, or assist a person in locating or observing, any big game mammal, game bird or fur-bearing mammal in a management unit described in NAC 504.210 during the period beginning on July 1 and ending on the last day of February of each calendar year with the use of an aircraft. (Refer to NAC 503/CGR 459)

ELECTRONIC LICENSE Hunters are required to possess a license in the field and have the ability to show it. This includes electronic versions. (Refer to NRS 502.120)



NEVADA

HOW DOES THE DRAW SYSTEM WORK?

All applications, regardless of species or class, are assigned a random number. Applications with bonus points are assigned additional random numbers by squaring the bonus point total and adding one for the current year (however only the lowest number within the bonus point application is used). Applications are drawn in sequential order starting with the lowest random number then evaluated within the following group order:

GROUP #1

Silver State, Partnership in Wildlife (PIW), and Junior Mule Deer

GROUP #2

Rocky Mountain Bighorn Sheep Ram, California Bighorn Sheep Ram, Nelson (Desert) Bighorn Sheep Ram, Elk Antlered, Elk Depredation Antlered, Antelope Horns Longer than Ears, Mule Deer Antlered, Mountain Goat, and Bear.

GROUP #3

California Bighorn Sheep Ewe, Nelson (Desert) bighorn Sheep Ewe, Elk Antlerless, Elk Depredation Antlerless, Antelope Horns Shorter than Ears, and Mule Deer Antlerless.

GROUP #4

Spike Elk, Management Ram, 1-Horn Ram

This allows applicants to put in for all species and gender classifications they wish to hunt, without worry of drawing a less preferred tag over a more preferred, due to changes in eligibility requirements (i.e., because you are now only allowed to draw a single tag for each species or subspecies category). For instance, in this draw order, if you draw an Antlered Elk tag early in the draw process, your application for Antlerless Elk will not be considered. However, you can apply for both Antlered and Antlerless Elk in the same draw and not worry about your Antlerless tag being drawn first before Antlered Elk.

IMPORTANT INFORMATION FOR 2023

First Come, First Served

First Come, First Served tags will now remain available for purchase only to the originally awarded residency as determined by the Nevada Board of Wildlife Commission in 2022.

Alternates

Alternates will now be awarded tags up until 14 calendar days before the hunt season opens. (NAC 502.421/CGR 490)

Transfer of Tag

Tag holders may choose to transfer their tag to a qualified, non-profit organization who would facilitate the tag being awarded to another individual represented by the organization and who meets specific criteria for participation in the tag transfer program. (AB 89/CGR 501)

Spike Elk

Spike elk means any antlered elk having not more than two antler points on either antler. (NAC 502.1045)

Hunt News

- Mountain goat will once again be offered as a hunt to non-residents. Any nonresident with existing mountain goat points will need to once again apply or purchase a bonus point in this application season or the next application season to keep their previously earned points.
- The Nelson (desert) bighorn ram management "One-Horn" hunt will continue this year in select unit groups. The shortest horn must be less than half the length of the longest horn. See page 15.
- Mountain goat will now be offered as a Silver State tag. See page 29.

Antelope

Horns longer than ears muzzleloader seasons for Units 041, 042; 043-046; 141, 143, 151-156; and 202, 204



were moved earlier to August 15 to August 21 to improve hunt success. The archery seasons for these unit groups were shortened to August 1 to August 14 to accommodate the earlier muzzleloader season.

New horns shorter than ears hunt for Unit 115 restricted to within 1 mile of Great Basin Ranch properties.

Elk

A new depredation bull hunt with antler point restrictions in Unit 231. This new hunt includes a special hunt boundary focusing pressure on bulls frequenting agricultural areas in Lake Valley. Successful applicants will receive a letter with special instructions and hunt map before their season begins.

Archery bull hunts during the rut (Sept. 17 - Sept. 30) are now offered in Units 161-164, 171-173 and Units 241, 242. Wilderness only antlerless elk hunts are not offered for the 2023-2024 Big Game Hunting Season. Applicants can expect a commensurate increase in available tags during standard antlerless elk seasons which include wilderness areas.

Bighorn Sheep

California bighorn ram - 011, 013 Unit Group is closed; Units 012 and 014 combined into a unit group.

Unit 161 - New archery ram hunt for residents and nonresidents in August. Early any-legal-weapon ram season is Sept 10 - 30; Ewe season October 1 - 20;

and late any legal weapon ram season is also earlier Oct 21 - Dec 1.

Unit 173 North (Toiyabe Range) has a management ram (once-in-a-lifetime) hunt that is a separate hunt category than the standard ram hunts. It is extremely challenging with limited hunter access (high elevation wilderness), heavy tree cover, and low density bighorn numbers.

Unit 181 is now split into an east hunt area (Sand Springs Range) and west hunt area (Fairview Range/Slate Mountain).

Unit 153 (Fish Creek Mountains) is now combined with Unit 183 (Augusta and Clan Alpine Mountains).

Units 212 and 213 now only have a single any legal weapon season, Nov 20 - Jan 1. Archery season opened in Unit 267.

Units 280 and 281 on the Department of Defense's Nevada Test and Training Range now have a hunting party limit of 5 including the tagholder. Unit 282 is closed due to lack of mature rams.

Rocky Mountain bighorn ram - Unit 102 open; Unit 114 is closed.

Mountain Goat

Nonresident hunt open for Mountain Goat in Unit 102.

Mule Deer

Junior mule deer hunts are now antlered only hunts except for the following unit groups 061, 062, 064, 066-068; 071-079, 091; and 101-109 that are either antlerless or antlered.

IMPORTANT 2023 APPLICATION CALENDAR DATES

| 2023 APPLICATION CALENDAR | BIG GAME MAIN DRAW | BIG GAME SECOND DRAW |
|-------------------------------|--------------------|----------------------|
| Application Period Opens | 3/20/2023 | 6/5/2023 |
| Application Period Deadline | 5/10/2023 | 6/12/2023 |
| Initial Draw Results Released | 5/19/2023 | 6/23/2023 |

NEVADA

BIG GAME
SEASONS (CR 23-04)

LIMITS AND HOURS

The limit is one animal per tag and the hunting hours are one-half hour before sunrise to one-half hour after sunset for all big game hunts, unless otherwise specified.

Important: The quotas listed are from the 2022 big game seasons. Big game quotas will not be set until the May 2023 Commission meeting in order to accommodate the most current data on big game herds. New hunts, dates or units added to a hunt are marked in *bold blue italics*.

Note: Standard dates for opening and closing of seasons are set by calendar date and not based on a Saturday opening and Sunday closing.

BEFORE YOU APPLY

The Department maintains several informational resources on our website at ndow.org to help with planning your hunt including: Hunter Information Sheets (facts on terrain, vegetation, land ownership, hunter access, map references, local services and recommended hunting areas), hunt application advisories, big game demand, hunter success rates, harvest point class and bighorn sheep age and scores.

BIG GAME
MAIN DRAW
ELECTRONIC
TAG RETURN

Within seven (7) days of public release of draw results, the successful tag recipient can choose to electronically return his or her tag at ndowlicensing.com.



ELIGIBILITY INFORMATION

Species Eligibility:

Applicants may only obtain one tag per species in a year. This means that eligible persons may apply for all categories of a species but only obtain one (1) tag of that species during the current year's season. This includes Silver State and PIW specialty tag options.

Species Categories:

- Junior, Antlered, and Antlerless Mule Deer
- Antlered, Antlerless, Depredation, and Spike Elk
- Antelope Horns Longer and Horns Shorter Than Ears
- Ram and Ewe Bighorn Sheep, including all subspecies (California, Desert and Rocky Mountain)
- Mountain Goat
- Bear
- Mountain Lion

FAQs:

Q: I am in a waiting period for Antlered Elk, can I apply for the Spike Elk hunt?

A: Yes. Antlered Elk and Spike Elk are considered two separate bonus point and hunt categories.

Q: If I apply for all available elk hunts, how many elk tags can I obtain during the year's season?

A: Only one (1) Elk tag per season regardless of what draw or tag program you receive the tag through.

Q: I'm in my waiting period for desert big-horn ram hunt, can I apply for a one-horn ram management hunt?

A: Yes, they are separate hunt categories.

Q: Can I purchase an Antelope Horns Shorter Than Ears tag through the First Come, First Served program if I drew an Antelope Horns Longer Than Ears tag in the main draw?

A: No. A person is only allowed one (1) tag of the same species during a single year's season.

Q: Will I use my Antlered Elk bonus points if I purchase an Antlerless Elk tag through the First Come, First Served program?

A: No. Your points for Antlerless Elk will be used but not your points for Antlered Elk. Bonus points are also not necessary in order to purchase a tag through the First Come, First Served program but will revert to zero (0) upon purchase.

NEVADA ANTELOPE HUNTS (NAC 502.341)



RESIDENT

ANTELOPE HUNTS

HORNS LONGER THAN EARS

| ANY LEGAL WEAPON | | |
|---------------------------------------|-----------------|------------|
| UNIT GROUP | SEASON DATES | 2022 QUOTA |
| 011 | Aug 22 - Sept 7 | 35 |
| 012 - 014 | Aug 22 - Sept 7 | 120 |
| 015 | Aug 22 - Sept 7 | 55 |
| 021, 022 | Aug 22 - Sept 7 | 35 |
| 031 | Aug 22 - Sept 7 | 90 |
| 032, 034 | Aug 22 - Sept 7 | 40 |
| 035 | Aug 22 - Sept 7 | 25 |
| 033 Early | Aug 22 - Aug 28 | 25 |
| 033 Late | Aug 29 - Sept 7 | 15 |
| 041, 042 Early | Aug 22 - Aug 28 | 25 |
| 041, 042 Late | Aug 29 - Sept 7 | 25 |
| 043 - 046 | Aug 22 - Sept 7 | 120 |
| 051 | Aug 22 - Sept 7 | 35 |
| 061, 062, 064, 071, 073 | Aug 22 - Sept 7 | 140 |
| 065, 142, 144 ^A | Aug 22 - Sept 7 | 25 |
| 066 | Aug 22 - Sept 7 | 25 |
| 067, 068 | Aug 22 - Sept 7 | 65 |
| 072, 074, 075 | Aug 22 - Sept 7 | 90 |
| 076, 077, 079, 081, 091 | Aug 22 - Sept 7 | 30 |
| 078, 105 - 107, 121 | Aug 22 - Sept 7 | 25 |
| 101 - 104, 108, 109, 144 ^B | Aug 22 - Sept 7 | 50 |
| 111 - 114 | Aug 22 - Sept 7 | 30 |
| 115, 231, 242 | Aug 22 - Sept 7 | 30 |
| 131, 145, 163, 164 | Aug 22 - Sept 7 | 10 |
| 132 - 134, 245 | Aug 22 - Sept 7 | 15 |
| 141, 143, 151 - 156 | Aug 22 - Sept 7 | 210 |
| 161, 162 | Aug 22 - Sept 7 | 30 |
| 171 - 173 | Aug 22 - Sept 7 | 25 |
| 181 - 184 | Aug 22 - Sept 7 | 55 |
| 202, 204 | Oct 15 - Oct 30 | 8 |
| 203, 291 | Aug 22 - Sept 7 | 10 |
| 205 - 208 | Aug 22 - Sept 7 | 15 |
| 211 - 213 | Aug 22 - Sept 7 | 6 |
| 221 - 223, 241 | Aug 22 - Sept 7 | 20 |
| 251 | Aug 22 - Sept 7 | 15 |

^A That portion of Unit 144 in Eureka County.

^B That portion of Unit 144 in White Pine County.

| ARCHERY | | |
|---------------------------------------|----------------|------------|
| UNIT GROUP | SEASON DATES | 2022 QUOTA |
| 011 | Aug 1 - Aug 21 | 5 |
| 012 - 014 | Aug 1 - Aug 21 | 10 |
| 015 | Aug 1 - Aug 21 | 15 |
| 021, 022 | Aug 1 - Aug 21 | 5 |
| 031 | Aug 1 - Aug 21 | 9 |
| 032, 034 | Aug 1 - Aug 21 | 20 |
| 035 | Aug 1 - Aug 21 | 4 |
| 033 | Aug 1 - Aug 21 | 1 |
| 041, 042 | Aug 1 - Aug 14 | 10 |
| 043 - 046 | Aug 1 - Aug 14 | 30 |
| 051 | Aug 1 - Aug 21 | 20 |
| 061, 062, 064, 071, 073 | Aug 1 - Aug 21 | 20 |
| 065, 142, 144 ^A | Aug 1 - Aug 21 | 3 |
| 066 | Aug 1 - Aug 21 | 5 |
| 067, 068 | Aug 1 - Aug 21 | 15 |
| 072, 074, 075 | Aug 1 - Aug 21 | 35 |
| 076, 077, 079, 081, 091 | Aug 1 - Aug 21 | 2 |
| 078, 105 - 107, 121 | Aug 1 - Aug 21 | 2 |
| 101 - 104, 108, 109, 144 ^B | Aug 1 - Aug 21 | 7 |
| 111 - 114 | Aug 1 - Aug 21 | 3 |
| 115, 231, 242 | Aug 1 - Aug 14 | 2 |
| 131, 145, 163, 164 | Aug 1 - Aug 14 | 1 |
| 132 - 134, 245 | Aug 1 - Aug 14 | 1 |
| 141, 143, 151 - 156 | Aug 1 - Aug 14 | 60 |
| 161, 162 | Aug 1 - Aug 21 | 5 |
| 171 - 173 | Aug 1 - Aug 21 | 5 |
| 181 - 184 | Aug 1 - Aug 21 | 10 |
| 203, 291 | Aug 1 - Aug 21 | 1 |
| 205 - 208 | Aug 1 - Aug 21 | 10 |
| 211 - 213 | Aug 1 - Aug 21 | 1 |
| 221 - 223, 241 | Aug 1 - Aug 14 | 3 |
| 251 | Aug 1 - Aug 21 | 5 |

^A That portion of Unit 144 in Eureka County.

^B That portion of Unit 144 in White Pine County.

PARTY HUNTS:

Did you know that you can join a party hunt or create a party hunt after your application has been created? Log into your ndowlicensing.com account and select the "Application and Points" section. Edit an application by clicking the pencil icon and enter or create a group number. Only certain hunts are eligible for party applications. Need help? Give us a call at 1-855-542-6369.

RESIDENT

ANTELOPE HUNTS

HORNS LONGER THAN EARS (CONTINUED)

MUZZLELOADER

| UNIT GROUP | SEASON DATES | 2022 QUOTA |
|---------------------------------------|-----------------|------------|
| 011 | Sept 25 - Oct 4 | 2 |
| 012 - 014 | Sept 25 - Oct 4 | 5 |
| 015 | Sept 25 - Oct 4 | 10 |
| 021 - 022 | Sept 25 - Oct 4 | 2 |
| 031 | Sept 25 - Oct 4 | 1 |
| 032, 034 | Sept 25 - Oct 4 | 1 |
| 035 | Sept 25 - Oct 4 | 2 |
| 033 | Sept 25 - Oct 4 | 1 |
| 041, 042 | Aug 15 - Aug 21 | 1 |
| 043 - 046 | Aug 15 - Aug 21 | 3 |
| 051 | Sept 25 - Oct 4 | 1 |
| 061, 062, 064, 071, 073 | Sept 25 - Oct 4 | 2 |
| 065, 142, 144 ^A | Sept 25 - Oct 4 | 1 |
| 066 | Sept 25 - Oct 4 | 3 |
| 067, 068 | Sept 25 - Oct 4 | 3 |
| 072, 074, 075 | Sept 25 - Oct 4 | 1 |
| 076, 077, 079, 081, 091 | Sept 25 - Oct 4 | 1 |
| 078, 105 - 107, 121 | Sept 25 - Oct 4 | 1 |
| 101 - 104, 108, 109, 144 ^B | Sept 25 - Oct 4 | 2 |
| 111 - 114 | Sept 25 - Oct 4 | 1 |
| 115, 231, 242 | Aug 15 - Aug 21 | 1 |
| 131, 145, 163, 164 | Aug 15 - Aug 21 | 1 |
| 132 - 134, 245 | Aug 15 - Aug 21 | 1 |
| 141, 143, 151 - 156 | Aug 15 - Aug 21 | 7 |
| 161 - 162 | Sept 25 - Oct 4 | 3 |
| 171 - 173 | Sept 25 - Oct 4 | 5 |
| 181 - 184 | Sept 25 - Oct 4 | 1 |
| 202, 204 | Aug 15 - Aug 21 | 1 |
| 203, 291 | Sept 25 - Oct 4 | 1 |
| 205 - 208 | Sept 25 - Oct 4 | 1 |
| 211 - 213 | Sept 25 - Oct 4 | 1 |
| 221 - 223, 241 | Aug 15 - Aug 21 | 1 |
| 251 | Sept 25 - Oct 4 | 2 |

^A That portion of Unit 144 in Eureka County.^B That portion of Unit 144 in White Pine County.

RESIDENT

ANTELOPE HUNTS

HORNS SHORTER THAN EARS

ANY LEGAL WEAPON

| UNIT GROUP | SEASON DATES | 2022 QUOTA |
|---------------------------------------|------------------|------------|
| 043 - 046 | Sept 8 - Sept 24 | 50 |
| 061, 062, 064, 071, 073 | Sept 8 - Sept 24 | 200 |
| 065, 142, 144 ^A | Sept 8 - Sept 24 | 6 |
| 066 | Sept 8 - Sept 24 | 10 |
| 067, 068 | Sept 8 - Sept 24 | 85 |
| 072, 074, 075 | Sept 8 - Sept 24 | 55 |
| 076, 077, 079, 081, 091 | Sept 8 - Sept 24 | 15 |
| 078, 105 - 107, 121 | Sept 8 - Sept 24 | New Hunt |
| 101 - 104, 108, 109, 144 ^B | Sept 8 - Sept 24 | 15 |
| 115 ^C | Sept 8 - Sept 24 | New Hunt |
| 131, 145 | Sept 8 - Sept 24 | 2 |
| 141, 143, 152, 154, 155 | Sept 8 - Sept 24 | 300 |
| 151, 153, 156 | Sept 8 - Sept 24 | 200 |
| 181 - 184 | Sept 8 - Sept 24 | 35 |

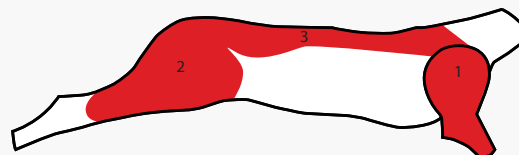
^A That portion of Unit 144 in Eureka County.^B That portion of Unit 144 in White Pine County.^C Within 1 mile of Great Basin Ranch properties in Hunt Unit 115.

MINIMUM LEGAL REQUIREMENTS FOR TAKING EDIBLE MEAT FROM THE FIELD

Hunters are encouraged to use as much of their harvest as possible. Although most meat from big game is edible, below are the minimum lawful requirements.

In the case of a big game mammal, the meat of the front quarters as far as the distal joint of the radius-ulna (knee), hind quarters as far as the distal joint of the tibia-fibula (hock), and the meat along the backbone between the front and hind quarters. NAC 503.0047

1. Front Quarter (Shoulder)
2. Hind Quarter (Thigh)
3. Backbone (Backstrap / Tenderloin)



NONRESIDENT

ANTELOPE HUNTS

HORNS LONGER THAN EARS

| ANY LEGAL WEAPON | | |
|---------------------------------------|-----------------|------------|
| UNIT GROUP | SEASON DATES | 2022 QUOTA |
| 011 | Aug 22 - Sept 7 | 4 |
| 012 - 014 | Aug 22 - Sept 7 | 15 |
| 015 | Aug 22 - Sept 7 | 6 |
| 021, 022 | Aug 22 - Sept 7 | 4 |
| 031 | Aug 22 - Sept 7 | 10 |
| 032, 034 | Aug 22 - Sept 7 | 4 |
| 035 | Aug 22 - Sept 7 | 1 |
| 033 Early | Aug 22 - Aug 28 | 1 |
| 033 Late | Aug 29 - Sept 7 | 1 |
| 041, 042 Early | Aug 22 - Aug 28 | 3 |
| 041, 042 Late | Aug 29 - Sept 7 | 3 |
| 043 - 046 | Aug 22 - Sept 7 | 15 |
| 051 | Aug 22 - Sept 7 | 3 |
| 061, 062, 064, 071, 073 | Aug 22 - Sept 7 | 15 |
| 065, 142, 144 ^A | Aug 22 - Sept 7 | 3 |
| 066 | Aug 22 - Sept 7 | 3 |
| 067, 068 | Aug 22 - Sept 7 | 7 |
| 072, 074, 075 | Aug 22 - Sept 7 | 10 |
| 076, 077, 079, 081, 091 | Aug 22 - Sept 7 | 3 |
| 078, 105 - 107, 121 | Aug 22 - Sept 7 | 3 |
| 101 - 104, 108, 109, 144 ^B | Aug 22 - Sept 7 | 5 |
| 111 - 114 | Aug 22 - Sept 7 | 3 |
| 115, 231, 242 | Aug 22 - Sept 7 | 3 |
| 131, 145, 163, 164 | Aug 22 - Sept 7 | 1 |
| 132 - 134, 245 | Aug 22 - Sept 7 | 2 |
| 141, 143, 151 - 156 | Aug 22 - Sept 7 | 25 |
| 161, 162 | Aug 22 - Sept 7 | 3 |
| 171 - 173 | Aug 22 - Sept 7 | 2 |
| 181 - 184 | Aug 22 - Sept 7 | 6 |
| 202, 204 | Oct 15 - Oct 30 | 1 |
| 205 - 208 | Aug 22 - Sept 7 | 2 |
| 221 - 223, 241 | Aug 22 - Sept 7 | 2 |
| 251 | Aug 22 - Sept 7 | 2 |

^A That portion of Unit 144 in Eureka County.

^B That portion of Unit 144 in White Pine County.

| ARCHERY | | |
|---------------------------------------|----------------|------------|
| UNIT GROUP | SEASON DATES | 2022 QUOTA |
| 011 | Aug 1 - Aug 21 | 1 |
| 012 - 014 | Aug 1 - Aug 21 | 2 |
| 015 | Aug 1 - Aug 21 | 1 |
| 021, 022 | Aug 1 - Aug 21 | 1 |
| 031 | Aug 1 - Aug 21 | 1 |
| 032, 034 | Aug 1 - Aug 21 | 2 |
| 035 | Aug 1 - Aug 21 | 1 |
| 033 | Aug 1 - Aug 21 | 1 |
| 041, 042 | Aug 1 - Aug 14 | 1 |
| 043 - 046 | Aug 1 - Aug 14 | 3 |
| 051 | Aug 1 - Aug 21 | 2 |
| 061, 062, 064, 071, 073 | Aug 1 - Aug 21 | 2 |
| 065, 142, 144 ^A | Aug 1 - Aug 21 | 1 |
| 067, 068 | Aug 1 - Aug 21 | 2 |
| 072, 074, 075 | Aug 1 - Aug 21 | 4 |
| 078, 105 - 107, 121 | Aug 1 - Aug 21 | 1 |
| 101 - 104, 108, 109, 144 ^B | Aug 1 - Aug 21 | 1 |
| 111 - 114 | Aug 1 - Aug 21 | 1 |
| 115, 231, 242 | Aug 1 - Aug 14 | 1 |
| 131, 145, 163, 164 | Aug 1 - Aug 14 | 1 |
| 132 - 134, 245 | Aug 1 - Aug 14 | 1 |
| 141, 143, 151 - 156 | Aug 1 - Aug 14 | 7 |
| 161, 162 | Aug 1 - Aug 21 | 1 |
| 171 - 173 | Aug 1 - Aug 21 | 1 |
| 181 - 184 | Aug 1 - Aug 21 | 1 |
| 205 - 208 | Aug 1 - Aug 21 | 1 |

^A That portion of Unit 144 in Eureka County.

^B That portion of Unit 144 in White Pine County.

| MUZZLELOADER | | |
|---------------------------------------|-----------------|------------|
| UNIT GROUP | SEASON DATES | 2022 QUOTA |
| 012 - 014 | Sept 25 - Oct 4 | 1 |
| 031 | Sept 25 - Oct 4 | 1 |
| 043 - 046 | Aug 15 - Aug 21 | 1 |
| 061, 062, 064, 071, 073 | Sept 25 - Oct 4 | 1 |
| 067, 068 | Sept 25 - Oct 4 | 1 |
| 078, 105 - 107, 121 | Sept 25 - Oct 4 | 1 |
| 101 - 104, 108, 109, 144 ^B | Sept 25 - Oct 4 | 1 |
| 111 - 114 | Sept 25 - Oct 4 | 1 |
| 141, 143, 151 - 156 | Aug 15 - Aug 21 | 1 |

^B That portion of Unit 144 in White Pine County.

HELICOPTERS AND YOUR HUNT

Each year, the Nevada Department of Wildlife conducts about 1,000 hours of surveys with two Department helicopters to determine the productivity and distribution of wildlife species from mule deer to eagles. Wildlife surveys are essential to harvest regulation, and the Department strives to avoid conducting surveys during hunting seasons. Unfortunately, due to weather and demands associated with optimal survey timing, the Department sometimes must conduct surveys during seasons when a hunt may be ongoing. We are asking hunters to recognize that a survey may occur during any open hunting season, although the Department will strive to avoid this to the best extent possible.

NEVADA

BIGHORN SHEEP HUNTS

(NAC 502.345) [Nelson (Desert), California & Rocky Mountain]

RESIDENT

NELSON (DESERT) BIGHORN SHEEP

ANY RAM

| ANY LEGAL WEAPON | | |
|------------------------|-------------------|------------|
| UNIT GROUP | SEASON DATES | 2022 QUOTA |
| 045 | Sept 15 - Oct 15 | 2 |
| 131, 132, 164 | Nov 20 - Jan 1 | 4 |
| 134, 251 | Nov 20 - Jan 1 | 3 |
| 161 Early | Sept 10 - Sept 30 | 8 |
| 161 Late | Oct 21 - Dec 1 | 7 |
| 163, 162 | Nov 20 - Jan 1 | 7 |
| 173 North ^A | Sept 15 - Jan 1 | 3 |
| 173 South ^B | Nov 20 - Jan 1 | 2 |
| 181 East ^C | Nov 20 - Jan 1 | New Hunt |
| 181 West ^D | Nov 20 - Jan 1 | New Hunt |
| 182, 044 | Nov 20 - Jan 1 | 18 |
| 183, 153 | Nov 20 - Jan 1 | 7 |
| 184 | Oct 15 - Nov 15 | 5 |
| 202 | Oct 15 - Nov 15 | 3 |
| 204 | Oct 15 - Nov 15 | 1 |
| 205 | Nov 20 - Jan 1 | 6 |
| 206, 208 | Nov 20 - Jan 1 | 4 |
| 207 | Oct 15 - Nov 15 | 3 |
| 211 | Nov 20 - Jan 1 | 10 |
| 212 | Nov 20 - Jan 1 | 9 |
| 213 | Nov 20 - Jan 1 | 6 |
| 223, 221 | Nov 20 - Jan 1 | 2 |
| 241 | Nov 20 - Jan 1 | 4 |
| 243 | Nov 20 - Jan 1 | 5 |
| 244 | Nov 20 - Jan 1 | 2 |
| 245, 133 | Nov 20 - Jan 1 | 4 |

| ANY LEGAL WEAPON (CONTINUED) | | |
|------------------------------|-----------------|------------|
| UNIT GROUP | SEASON DATES | 2022 QUOTA |
| 252*** | Nov 18 - Dec 10 | 2 |
| 253 | Nov 20 - Jan 1 | 5 |
| 254 | Nov 20 - Jan 1 | 3 |
| 261 | Nov 20 - Jan 1 | 3 |
| 262 | Nov 20 - Jan 1 | 3 |
| 263 | Nov 20 - Jan 1 | 4 |
| 264, 265, 266 | Nov 20 - Jan 1 | 2 |
| 267 | Nov 20 - Jan 1 | 8 |
| 268 | Nov 20 - Jan 1 | 33 |
| 271, 242** | Nov 20 - Jan 1 | 6 |
| 272 | Nov 20 - Jan 1 | 1 |
| 280*** | Dec 16 - Jan 1 | 3 |
| 281*** | Dec 16 - Jan 1 | 4 |
| 283, 284 | Nov 20 - Jan 1 | 3 |
| 286 | Nov 20 - Jan 1 | 2 |

| ARCHERY | | |
|------------|----------------|------------|
| UNIT GROUP | SEASON DATES | 2022 QUOTA |
| 161 | Aug 5 - Aug 25 | New Hunt |
| 182, 044 | Oct 1 - Oct 31 | 2 |
| 202 | Oct 1 - Oct 31 | 1 |
| 211 | Oct 1 - Oct 31 | 1 |
| 212 | Oct 1 - Oct 31 | 2 |
| 213 | Oct 1 - Oct 31 | 2 |
| 267 | Oct 1 - Oct 31 | New Hunt |

^A That portion of Unit 173 north and west of the Seyler Reservoir/Peavine Creek/Gabbs Valley Pole Line Roads.^B That portion of Unit 173 south and east of the Seyler Reservoir/Peavine Creek/Gabbs Valley Pole Line Roads.^C 181 East - That portion of Unit 181 east of State Route 839^D 181 West - That portion of Unit 181 west of State Route 839^{*} There are portions of Unit 181 in Naval Air Station (NAS) Fallon where public access is restricted. To hunt in the NAS portions of Unit 181, the tagholder is required to attend a NAS hunter safety briefing.^{**} Mature ram numbers and distribution are unknown in this unit.^{***} Portions of Hunt Units 252, 280, 281 are within the Nevada Test and Training Range (NTTR) where public access is restricted. Hunters and everyone in their respective hunting parties, must comply with all Nevada hunting requirements and all NTTR safety and security requirements including the following: 1) consent to and pass a criminal history background check, 2) be at least 14 years old on opening day of the respective hunting season, 3) attend the Nellis Air Force Base hunter safety briefing, and 4) within the NTTR Hunt Units 252, 280, 281, limit party size to 5 including tagholder. Additional party members may complete background check and safety briefing, but only maximum of 5 party members including tagholder may be present within the NTTR Hunt Units 252, 280, 281 at any given time.^{***} Hunters and members of their parties who fail to comply with these requirements may be denied access to the NTTR. Hunters and members of their parties may not access the NTTR after a tag is filled and animal has been removed and in possession of tagholder. No pets are allowed on NTTR. It is the hunter's responsibility to meet and/or comply with all NTTR eligibility requirements. In some units there may be adjustments to season dates to accommodate Department of Defense operations. The Nevada Board of Wildlife Commissioners hereby delegates authority to the Nevada Department of Wildlife to adjust season dates to accommodate Department of Defense operations so long as there is no change to the overall length of the season.

RESIDENT

NELSON (DESERT) BIGHORN SHEEP

MANAGEMENT RAM - ACCESS LIMITED*

| ANY LEGAL WEAPON | | |
|------------------------|----------------|------------|
| UNIT GROUP | SEASON DATES | 2022 QUOTA |
| 173 North ^A | Aug 15 - Jan 1 | New Hunt |

^A 173 North - Restricted to that portion of Unit 173 within the Arc Dome Wilderness boundary and north of the wilderness boundary from the crest to the east base of the Toiyabe Range, beginning with the North Twin River drainage north to the Summit Creek drainage.^{*} 1) a separate hunt category, 2) no bonus points awarded to unsuccessful applicants per NAC 502.4187, 3) a once-in-a-lifetime hunt based on successfully drawing a tag and therefore has no waiting period eligibility.

RESIDENT

NELSON (DESERT) BIGHORN SHEEP
MANAGEMENT RAM – ONE HORN*

| ANY LEGAL WEAPON | | |
|-------------------------|----------------|------------|
| UNIT GROUP | SEASON DATES | 2022 QUOTA |
| 241, 243, 271 | Jan 5 - Feb 20 | 1 |
| 223, 245, 133 | Jan 5 - Feb 20 | 1 |
| 253, 254, 261 | Jan 5 - Feb 20 | 2 |
| 262, 263, 264, 265, 266 | Jan 5 - Feb 20 | 3 |
| 267, 268 | Jan 5 - Feb 20 | 4 |
| 283, 284, 286 | Jan 5 - Feb 20 | 1 |

* The shortest horn must be less than half the length of the longest horn.

* Management Ram Hunt - 1) a separate hunt category, 2) no bonus points awarded to unsuccessful applicants per NAC 502.4187, and 3) a once-in-a-lifetime hunt based on successfully drawing a tag and therefore has no waiting period eligibility.

RESIDENT

NELSON (DESERT) BIGHORN SHEEP
ANY EWE

| ANY LEGAL WEAPON | | |
|------------------|-----------------|------------|
| UNIT GROUP | SEASON DATES | 2022 QUOTA |
| 161 | Oct 1 - Oct 20 | 45 |
| 268 | Oct 20 - Nov 15 | 36 |

RESIDENT

CALIFORNIA BIGHORN SHEEP
ANY RAM

| ANY LEGAL WEAPON | | |
|-----------------------|-----------------|------------|
| UNIT GROUP | SEASON DATES | 2022 QUOTA |
| 012, 014 | Sept 1 - Oct 31 | 2 |
| 022* | Sept 1 - Oct 31 | 2 |
| 031 | Sept 1 - Oct 31 | 6 |
| 032 ^A | Sept 1 - Oct 31 | 9 |
| 033, 032 ^B | Sept 1 - Oct 31 | 2 |
| 034 | Sept 1 - Oct 31 | 8 |
| 035 ^C | Sept 1 - Oct 31 | 8 |
| 051 | Sept 1 - Oct 31 | 2 |
| 068 | Sept 1 - Oct 31 | 5 |

* Access to public land to hunt bighorn sheep is limited across private land.

^A This unit excludes that portion of Unit 032 west of the Craine Creek/Knott Creek Ranch Road and south of State Route No. 140 ([McGee Mountain](#)).

^B This unit includes that portion of Unit 032 west of the Craine Creek/Knott Creek Ranch Road and south of State Route No. 140 ([McGee Mountain](#)).

^C That portion of Unit 035 west of the Bottle Creek Road from the north boundary of State Route 140 to the south boundary of the Jungo railroad crossing ([excludes Bloody Run Hills](#)).

RESIDENT

ROCKY MOUNTAIN BIGHORN SHEEP
ANY RAM

| ANY LEGAL WEAPON | | |
|------------------|-----------------|------------|
| UNIT GROUP | SEASON DATES | 2022 QUOTA |
| 102 | Sept 1 - Oct 31 | 1 |
| 115 ^A | Nov 15 - Feb 20 | 2 |

^A That portion of Unit 115 outside of the Great Basin National Park.

NONRESIDENT

NELSON (DESERT) BIGHORN SHEEP
ANY RAM

| ANY LEGAL WEAPON | | |
|------------------------|-------------------|------------|
| UNIT GROUP | SEASON DATES | 2022 QUOTA |
| 161 Early | Sept 10 - Sept 30 | 1 |
| 161 Late | Oct 21 - Dec 1 | 1 |
| 181 East ^C | Nov 20 - Jan 1 | New Hunt |
| 181 West ^D | Nov 20 - Jan 1 | New Hunt |
| 182, 044 | Nov 20 - Jan 1 | 2 |
| 183, 153 | Nov 20 - Jan 1 | 1 |
| 184 | Oct 15 - Nov 15 | 1 |
| 205 | Nov 20 - Jan 1 | 1 |
| 211 | Nov 20 - Jan 1 | 1 |
| 212 | Nov 20 - Jan 1 | 1 |
| 213 | Nov 20 - Jan 1 | 1 |
| 253 | Nov 20 - Jan 1 | 1 |
| 263 | Nov 20 - Jan 1 | 1 |
| 267 | Nov 20 - Jan 1 | 1 |
| 268 | Nov 20 - Jan 1 | 5 |
| 271, 242 ^{**} | Nov 20 - Jan 1 | 1 |
| 283, 284 | Nov 20 - Jan 1 | 1 |

^C 181 East - That portion of Unit 181 east of State Route 839

^D 181 West - That portion of Unit 181 west of State Route 839

* There are portions of Unit 181 East in Naval Air Station (NAS) Fallon where public access is restricted. To hunt in the NAS portions of Unit 181, the tagholder is required to attend a NAS hunter safety briefing.

** Mature ram numbers and distribution are unknown in this unit.

ARCHERY

| UNIT GROUP | SEASON DATES | 2022 QUOTA |
|------------|----------------|------------|
| 161 | Aug 5 - Aug 25 | New Hunt |

NONRESIDENT

NELSON (DESERT) BIGHORN SHEEP
ANY EWE

| ANY LEGAL WEAPON | | |
|------------------|-----------------|------------|
| UNIT GROUP | SEASON DATES | 2022 QUOTA |
| 161 | Oct 1 - Oct 20 | 5 |
| 268 | Oct 20 - Nov 15 | 4 |

NONRESIDENT

CALIFORNIA BIGHORN SHEEP
ANY RAM

| ANY LEGAL WEAPON | | |
|------------------|-----------------|------------|
| UNIT GROUP | SEASON DATES | 2022 QUOTA |
| 032 ^A | Sept 1 - Oct 31 | 1 |
| 034 | Sept 1 - Oct 31 | 1 |
| 035 ^C | Sept 1 - Oct 31 | 1 |
| 068 | Sept 1 - Oct 31 | 1 |

^A This unit excludes that portion of Unit 032 west of the Craine Creek/Knott Creek Ranch Road and south of State Route No. 140 ([McGee Mountain](#)).

^C That portion of Unit 035 west of the Bottle Creek Road from the north boundary of State Route 140 to the south boundary of the Jungo railroad crossing ([excludes Bloody Run Hills](#)).

NEVADA

MOUNTAIN
GOAT HUNTS

(NAC 502.364)



SUCCESSFUL HUNTERS

- Successful hunters for bighorn sheep ram, mountain goat and bear who have their harvest physically inspected at a Department office will not be required to return a big game hunt survey.
- Successful applicants for bighorn sheep ewe and mountain goat tags will need to watch an online seminar before their tags will be mailed to them.
- Bighorn sheep ewe hunters are not required to have their harvest physically inspected at a Department office.
- Contact the nearest regional NDOW office to schedule a harvest inspection.

RESIDENT

MOUNTAIN GOAT HUNTS

ANY GOAT

| ANY LEGAL WEAPON | | |
|------------------|-----------------|------------|
| UNIT GROUP | SEASON DATES | 2022 QUOTA |
| 101 | Sept 1 - Oct 31 | 1 |
| 102 | Sept 1 - Oct 31 | 12 |
| 103 | Sept 1 - Oct 31 | 1 |

NONRESIDENT

MOUNTAIN GOAT HUNTS

ANY GOAT

| ANY LEGAL WEAPON | | |
|------------------|-----------------|------------|
| UNIT GROUP | SEASON DATES | 2022 QUOTA |
| 102 | Sept 1 - Oct 31 | New Hunt |

NEVADA

ELK HUNTS (NAC 502.361)



RESIDENT

ELK HUNTS

ANTLERED

| ANY LEGAL WEAPON | | |
|-----------------------------------|-------------------|------------|
| UNIT GROUP | SEASON DATES | 2022 QUOTA |
| 051 | Sept 17 - Sept 30 | 6 |
| 061, 071 Early | Oct 5 - Oct 21 | 18 |
| 061, 071 Late | Oct 22 - Nov 5 | 25 |
| 062, 064, 066 - 068 | Oct 22 - Nov 5 | 13 |
| 072, 073, 074 Early | Oct 22 - Nov 5 | 55 |
| 072, 073, 074 Late | Nov 6 - Nov 20 | 55 |
| 075 Early | Oct 22 - Nov 5 | 6 |
| 075 Late | Nov 6 - Nov 20 | 5 |
| 076, 077, 079, 081 Early | Nov 6 - Nov 20 | 60 |
| 076, 077, 079, 081 Late | Nov 21 - Dec 4 | 60 |
| 078, 105 - 107, 109 Early | Oct 22 - Nov 5 | 19 |
| 078, 105 - 107, 109 Late | Nov 6 - Nov 20 | 19 |
| 091* | Sept 16 - Oct 6 | 12 |
| 104, 108 ^B , 121 Early | Nov 6 - Nov 20 | 40 |
| 104, 108 ^B , 121 Late | Nov 21 - Dec 4 | 40 |

| ANY LEGAL WEAPON | | |
|-----------------------------------|-------------------|------------|
| UNIT GROUP | SEASON DATES | 2022 QUOTA |
| 108 ^C , 131, 132 Early | Nov 6 - Nov 20 | 60 |
| 108 ^C , 131, 132 Late | Nov 21 - Dec 4 | New Hunt |
| 111 - 115 Early | Nov 6 - Nov 20 | 80 |
| 111 - 115 Late | Nov 21 - Dec 4 | 80 |
| 161 - 164, 171 - 173 Early | Nov 6 - Nov 20 | 6 |
| 161 - 164, 171 - 173 Late | Nov 21 - Dec 4 | 35 |
| 221 - 223 Early | Nov 6 - Nov 20 | 65 |
| 221 - 223 Late | Nov 21 - Dec 4 | 65 |
| 231 Early | Nov 6 - Nov 20 | 40 |
| 231 Late | Nov 21 - Dec 4 | 40 |
| 241, 242 | Nov 6 - Nov 20 | 4 |
| 262 | Sept 17 - Sept 30 | 2 |

* Interstate hunt with Utah. Nevada and Utah hunters may hunt within open units in both states. Nevada hunters hunting in Utah must abide by Utah regulations.

^B That portion of Unit 108 north of the Falcon to Gonder powerline.

^C That portion of Unit 108 south of the Falcon to Gonder powerline.

RESIDENT

ELK HUNTS

ANTLERED (CONTINUED)

| ARCHERY | | |
|-----------------------------|-------------------|------------|
| UNIT GROUP | SEASON DATES | 2022 QUOTA |
| 061, 071 | Aug 16 - Aug 31 | 25 |
| 062, 064, 066 - 068 | Aug 16 - Aug 31 | 1 |
| 072, 073, 074 | Aug 25 - Sept 16 | 35 |
| 075 | Aug 25 - Sept 16 | 3 |
| 076, 077, 079, 081 | Aug 25 - Sept 16 | 12 |
| 078, 105 - 107, 109 | Sept 1 - Sept 20 | 10 |
| 091* | Aug 19 - Sept 9 | 4 |
| 104, 108 ^b , 121 | Aug 25 - Sept 16 | 11 |
| 108 ^c , 131, 132 | Aug 25 - Sept 16 | 5 |
| 111 - 115 | Aug 25 - Sept 16 | 25 |
| 161 - 164, 171 - 173 | Sept 17 - Sept 30 | 13 |
| 221 - 223 | Aug 25 - Sept 16 | 30 |
| 231 | Aug 25 - Sept 16 | 12 |
| 241, 242 | Sept 17 - Sept 30 | 2 |
| 262 | Aug 25 - Sept 16 | 1 |

* Interstate hunt with Utah. Nevada and Utah hunters may hunt within open units in both states. Nevada hunters hunting in Utah must abide by Utah regulations.

^b That portion of Unit 108 north of the Falcon to Gonder powerline.

^c That portion of Unit 108 south of the Falcon to Gonder powerline.

RESIDENT

ELK HUNTS

ANTLERED — DEPREDAATION

Special Regulations: Eligibility restrictions concerning successive years' hunts as stated in NAC 502.361 do not apply to this hunt.

| ANY LEGAL WEAPON DEPREDAATION | | |
|--|------------------|------------|
| UNIT GROUP | SEASON DATES | 2022 QUOTA |
| 101 - 103 Early* | Aug 1 - Sept 30 | 50 |
| 101 - 103 Late* | Oct 1 - Jan 1 | 50 |
| 115 ^a Antler Pt. Limit ^t - 1st | Aug 1 - Aug 15 | 5 |
| 115 ^a Antler Pt. Limit ^t - 2nd | Aug 16 - Aug 31 | 5 |
| 115 ^a Antler Pt. Limit ^t - 3rd | Sept 1 - Sept 30 | 5 |
| 115 ^a Antler Pt. Limit ^t - 4th | Oct 1 - Oct 31 | 5 |
| 115 ^a Antler Pt. Limit ^t - 5th | Nov 1 - Nov 30 | 5 |
| 144, 145 Early* | Sept 1 - Sept 30 | 5 |
| 144, 145 Mid* | Oct 1 - Oct 31 | 5 |
| 144, 145 Late* | Nov 1 - Jan 1 | 5 |
| 231 ^b Antler Pt. Limit ^t - 1st | Aug 1 - Aug 15 | New Hunt |
| 231 ^b Antler Pt. Limit ^t - 2nd | Aug 16 - Aug 31 | New Hunt |
| 231 ^b Antler Pt. Limit ^t - 3rd | Sept 1 - Sept 30 | New Hunt |
| 231 ^b Antler Pt. Limit ^t - 4th | Oct 1 - Oct 31 | New Hunt |
| 231 ^b Antler Pt. Limit ^t - 5th | Nov 1 - Nov 30 | New Hunt |
| 251* | Aug 1 - Jan 1 | 10 |

* Low elk numbers in the area. Depredation Hunts are intended to drastically reduce elk numbers. Poor hunter success expected.

^a Within 2 miles of designated Great Basin Ranch Properties.

^b Within 2 miles of designated Lake Valley Farms, Eight Mile Farms, and Flatnose Ranch Properties in Hunt Unit 231.

^t Hunters may only take an antlered elk with no more than 5 points on either antler including the first point on the main beam. An antler point is defined in Nevada Administrative Code (NAC 502.006) as any antler projection which is at least 1-inch in length with the length exceeding the width of its base.

| MUZZLELOADER | | |
|-----------------------------|-------------------|------------|
| UNIT GROUP | SEASON DATES | 2022 QUOTA |
| 051 | Sept 1 - Sept 16 | 1 |
| 061, 071 | Sept 1 - Sept 16 | 8 |
| 062, 064, 066-068 | Sept 1 - Sept 16 | 2 |
| 072, 073, 074 | Sept 17 - Sept 30 | 10 |
| 075 | Sept 17 - Sept 30 | 1 |
| 076, 077, 079, 081 | Oct 22 - Nov 5 | 12 |
| 078, 105 - 107, 109 | Oct 5 - Oct 21 | 13 |
| 104, 108 ^b , 121 | Oct 22 - Nov 5 | 18 |
| 108 ^c , 131, 132 | Oct 22 - Nov 5 | 7 |
| 111 - 115 | Oct 22 - Nov 5 | 20 |
| 161 - 164, 171 - 173 | Oct 22 - Nov 5 | 6 |
| 221 - 223 | Oct 22 - Nov 5 | 16 |
| 231 | Oct 22 - Nov 5 | 6 |
| 241, 242 | Oct 22 - Nov 5 | 2 |
| 262 | Oct 22 - Nov 5 | 1 |

^b That portion of Unit 108 north of the Falcon to Gonder powerline.

^c That portion of Unit 108 south of the Falcon to Gonder powerline.

RESIDENT

ELK HUNTS

SPIKE

| ANY LEGAL WEAPON | | |
|-----------------------------------|-----------------|------------|
| UNIT GROUP | SEASON DATES | 2022 QUOTA |
| 061, 071 Early | Sept 17 - Oct 4 | 4 |
| 061, 071 Late | Nov 6 - Jan 1 | 4 |
| 062, 064, 066 - 068 | Sept 17 - Oct 4 | 2 |
| 072, 073, 074 Early | Oct 1 - Oct 20 | 12 |
| 072, 073, 074 Late | Nov 21 - Jan 1 | 12 |
| 076, 077, 079, 081 Early | Oct 1 - Oct 20 | 10 |
| 076, 077, 079, 081 Late | Dec 5 - Jan 1 | 10 |
| 078, 107 Early | Sept 21 - Oct 4 | New Hunt |
| 105, 106, 109 Early | Sept 21 - Oct 4 | New Hunt |
| 078, 105 - 107, 109 Late | Nov 21 - Jan 1 | New Hunt |
| 104, 108 ^b , 121 Early | Sept 25 - Oct 4 | 15 |
| 104, 108 ^b , 121 Late | Dec 5 - Jan 1 | New Hunt |
| 111, 112 Early | Sept 25 - Oct 4 | 10 |
| 111, 112 Late | Dec 5 - Jan 1 | 10 |
| 113 Early | Sept 25 - Oct 4 | 2 |
| 113 Late | Dec 5 - Jan 1 | 2 |
| 114, 115 Early | Sept 25 - Oct 4 | 8 |
| 114, 115 Late | Dec 5 - Jan 1 | 8 |
| 161 - 164 | Dec 5 - Jan 1 | 10 |
| 221 Early | Sept 25 - Oct 4 | 11 |
| 221 Late | Dec 5 - Jan 1 | 10 |
| 222, 223 Early | Sept 25 - Oct 4 | 10 |
| 222, 223 Late | Dec 5 - Jan 1 | 10 |
| 231 Early | Sept 25 - Oct 4 | 10 |
| 231 Late | Dec 5 - Jan 1 | 10 |

^b That portion of Unit 108 north of the Falcon to Gonder powerline.

RESIDENT

ELK HUNTS

ANTLERLESS

ANY LEGAL WEAPON

| UNIT GROUP | SEASON DATES | 2022 QUOTA |
|-----------------------------------|-----------------|------------|
| 061, 071 Early | Sept 17 - Oct 4 | 125 |
| 061, 071 Late | Nov 6 - Jan 1 | 110 |
| 062 Early | Sept 17 - Oct 4 | 75 |
| 062, 066 ^A Late | Nov 6 - Jan 1 | New Hunt |
| 072, 073, 074 Early | Oct 1 - Oct 20 | 50 |
| 075 Early | Oct 1 - Oct 20 | 6 |
| 072 - 075 Late | Nov 21 - Jan 1 | 40 |
| 076, 077, 079, 081 Early | Oct 1 - Oct 20 | 70 |
| 076, 077, 079, 081 Late | Dec 5 - Jan 1 | 40 |
| 078, 107 Early | Sept 21 - Oct 4 | New Hunt |
| 105, 106, 109 Early | Sept 21 - Oct 4 | New Hunt |
| 078, 105 - 107, 109 Late | Nov 21 - Jan 1 | 55 |
| 091 Early* | Aug 1 - Aug 18 | 5 |
| 091 Late* | Oct 7 - Nov 1 | 5 |
| 104, 108 ^B , 121 Early | Sept 25 - Oct 4 | 40 |
| 104, 108 ^B , 121 Late | Dec 5 - Jan 1 | 25 |
| 108 ^C , 131 132 | Sept 25 - Oct 4 | 10 |
| 111, 112 Early | Sept 25 - Oct 4 | 45 |
| 111, 112 Late | Dec 5 - Jan 1 | 50 |
| 113 Early | Sept 25 - Oct 4 | 10 |
| 113 Late | Dec 5 - Jan 1 | 10 |
| 113 N ^D | Jan 2 - Jan 31 | 9 |
| 114, 115 Early | Sept 25 - Oct 4 | 55 |
| 114, 115 Late | Dec 5 - Jan 1 | 55 |
| 161 - 164 Early | Oct 1 - Oct 20 | 40 |
| 161 - 164 Late | Dec 5 - Jan 1 | 55 |
| 221 Early | Sept 25 - Oct 4 | 35 |
| 221 Late | Dec 5 - Jan 1 | 20 |
| 222, 223 Early | Sept 25 - Oct 4 | 35 |
| 222, 223 Late | Dec 5 - Jan 1 | 40 |
| 231 Early | Sept 25 - Oct 4 | 30 |
| 231 Late | Dec 5 - Jan 1 | 40 |
| 241, 242 | Oct 1 - Oct 20 | 10 |

* Interstate hunt with Utah. Nevada and Utah hunters may hunt within open units in both states. Nevada hunters hunting in Utah must abide by Utah regulations.

^A That portion of Unit 066 east and north of the South Fork of the Owyhee River.

^B That portion of Unit 108 north of the Falcon to Gonder powerline.

^C That portion of Unit 108 south of the Falcon to Gonder powerline.

^D That portion of Unit 113 north of White Pine County Road 35.

ARCHERY

| UNIT GROUP | SEASON DATES | 2022 QUOTA |
|-----------------------------|----------------|------------|
| 061, 071 | Aug 1 - Aug 15 | 45 |
| 062 | Aug 1 - Aug 15 | 10 |
| 072, 073, 074 | Aug 1 - Aug 24 | 8 |
| 075 | Aug 1 - Aug 24 | 2 |
| 076, 077, 079, 081 | Aug 1 - Aug 24 | 8 |
| 078, 105 - 107, 109 | Aug 1 - Aug 15 | 20 |
| 104, 108 ^B , 121 | Aug 1 - Aug 24 | 4 |
| 108 ^C , 131, 132 | Aug 1 - Aug 24 | 2 |
| 111, 112 | Aug 1 - Aug 24 | 10 |
| 113 | Aug 1 - Aug 24 | 5 |
| 114, 115 | Aug 1 - Aug 24 | 12 |
| 161 - 164 | Aug 1 - Aug 24 | 8 |
| 221 - 223 | Aug 1 - Aug 24 | 25 |
| 231 | Aug 1 - Aug 24 | 5 |
| 241, 242 | Aug 1 - Aug 24 | 3 |

^B That portion of Unit 108 north of the Falcon to Gonder powerline.

^C That portion of Unit 108 south of the Falcon to Gonder powerline.

MUZZLELOADER

| UNIT GROUP | SEASON DATES | 2022 QUOTA |
|-----------------------------|-------------------|------------|
| 072, 073, 074 | Sept 17 - Sept 30 | 9 |
| 075 | Sept 17 - Sept 30 | 2 |
| 076, 077, 079, 081 | Sept 17 - Sept 30 | 11 |
| 078, 105 - 107, 109 | Aug 16 - Aug 31 | 15 |
| 104, 108 ^B , 121 | Sept 17 - Sept 24 | 5 |
| 108 ^C , 131, 132 | Sept 17 - Sept 24 | 2 |
| 111, 112 | Sept 17 - Sept 24 | 5 |
| 113 | Sept 17 - Sept 24 | 7 |
| 114, 115 | Sept 17 - Sept 24 | 15 |
| 161 - 164 | Aug 25 - Sept 16 | 4 |
| 221 - 223 | Sept 17 - Sept 24 | 13 |
| 231 | Sept 17 - Sept 24 | 5 |
| 241, 242 | Aug 25 - Sept 16 | New Hunt |

^B That portion of Unit 108 north of the Falcon to Gonder powerline.

^C That portion of Unit 108 south of the Falcon to Gonder powerline.

PARTY HUNTS AND
BONUS POINTS

Party hunt members are able to return their party tag to the Department but will not receive their bonus points back unless all members of the party also return their tags to the Department.

ACTIVE MEMBERS OF THE ARMED FORCES

Active members in the Armed Forces who are stationed outside of the U.S. and lose their bonus points due to a lapse in applying may now be refunded their lost points after they return to the country. (NAC 502.4187)

RESIDENT

ELK HUNTS

ANTLERLESS – DEPREDAATION

ANY LEGAL WEAPON DEPREDAATION

| UNIT GROUP | SEASON DATES | 2022 QUOTA |
|--|-------------------|------------|
| 081 ^A 1st* | Aug 1 - Aug 24 | 12 |
| 081 ^A 2nd* | Sept 17 - Sept 30 | 18 |
| 081 ^A 3rd* | Oct 1 - Oct 20 | 17 |
| 081 ^A 4th* | Dec 5 - Jan 1 | 18 |
| 101 - 103* | Aug 1 - Jan 1 | 150 |
| 114 ^B , 115 ^B - Ag Lands - 1st | Aug 1 - Aug 15 | 20 |
| 114 ^B , 115 ^B - Ag Lands - 2nd | Aug 16 - Aug 31 | 20 |
| 114 ^B , 115 ^B - Ag Lands - 3rd | Sept 1 - Sept 30 | 20 |
| 114 ^B , 115 ^B - Ag Lands - 4th | Oct 1 - Oct 31 | 20 |

ANY LEGAL WEAPON DEPREDAATION (CONTINUED)

| UNIT GROUP | SEASON DATES | 2022 QUOTA |
|--|------------------|------------|
| 114 ^B , 115 ^B - Ag Lands - 5th | Nov 1 - Nov 30 | 20 |
| 121 ^C 1st* | Aug 1 - Aug 31 | 25 |
| 121 ^C 2nd* | Sept 1 - Sept 30 | 10 |
| 121 ^C 3rd* | Oct 1 - Jan 1 | 10 |
| 144, 145 1st* | Aug 1 - Aug 31 | 5 |
| 144, 145 2nd* | Sept 1 - Sept 30 | 5 |
| 144, 145 3rd* | Oct 1 - Jan 1 | 5 |

* Low elk numbers in the area. Depredation Hunts are intended to drastically reduce elk numbers from this Unit Group. Poor hunter success expected.

^A That portion of Unit 081 within Elko County bounded on the west by the Fall Creek Road, on the north by the Idaho state line, on the east by the Utah state line, and on the south by the Signboard Pass-Thousand Springs Road and by State Route No. 233 from Montello to the Utah state line.

^B Within 2 miles of designated Granite Peak Ranch and Great Basin Ranch Properties in Hunt Unit 115 and within 2 miles of designated Baker Ranch Properties in Hunt Units 114 and 115. Hunt boundaries terminate at the Nevada state line where applicable.

^C Those portions of Elko County southeast of the Cherry Creek Road and southwest of U.S. Highway 93, and that portion of White Pine County west of U.S. Highway 93, north of White Pine County Road 27 (Bassett Lake Rd.), and east of White Pine County Road 27 to its junction with White Pine County Road 18 to its junction with White Pine County Road 23 (bench road from Bassett Lake Road to the town of Cherry Creek) to State Highway 489 0.2 miles east to its junction with White Pine County Road 25 to the Elko County Line.

NONRESIDENT

ELK HUNTS

ANTLERED

ANY LEGAL WEAPON

| UNIT GROUP | SEASON DATES | 2022 QUOTA |
|-----------------------------------|----------------|------------|
| 061, 071 Early | Oct 5 - Oct 21 | 2 |
| 061, 071 Late | Oct 22 - Nov 5 | 3 |
| 062, 064, 066 - 068 | Oct 22 - Nov 5 | 1 |
| 072, 073, 074 Early | Oct 22 - Nov 5 | 6 |
| 072, 073, 074 Late | Nov 6 - Nov 20 | 6 |
| 075 Early | Oct 22 - Nov 5 | 1 |
| 075 Late | Nov 6 - Nov 20 | 1 |
| 076, 077, 079, 081 Early | Nov 6 - Nov 20 | 7 |
| 076, 077, 079, 081 Late | Nov 21 - Dec 4 | 7 |
| 078, 105 - 107, 109 Early | Oct 22 - Nov 5 | 3 |
| 078, 105 - 107, 109 Late | Nov 6 - Nov 20 | 2 |
| 104, 108 ^B , 121 Early | Nov 6 - Nov 20 | 5 |
| 104, 108 ^B , 121 Late | Nov 21 - Dec 4 | 6 |
| 108 ^C , 131, 132 Early | Nov 6 - Nov 20 | 7 |
| 108 ^C , 131, 132 Late | Nov 21 - Dec 4 | 9 |
| 111 - 115 Early | Nov 6 - Nov 20 | 9 |
| 111 - 115 Late | Nov 21 - Dec 4 | 1 |
| 161 - 164, 171 - 173 Early | Nov 6 - Nov 20 | 3 |
| 161 - 164, 171 - 173 Late | Nov 21 - Dec 4 | 4 |
| 221 - 223 Early | Nov 6 - Nov 20 | 8 |
| 221 - 223 Late | Nov 21 - Dec 4 | 8 |
| 231 Early | Nov 6 - Nov 20 | 4 |
| 231 Late | Nov 21 - Dec 4 | 4 |

^B That portion of Unit 108 north of the Falcon to Gonder powerline.

^C That portion of Unit 108 south of the Falcon to Gonder powerline.

ARCHERY

| UNIT GROUP | SEASON DATES | 2022 QUOTA |
|-----------------------------|-------------------|------------|
| 061, 071 | Aug 16 - Aug 31 | 3 |
| 062, 064, 066 - 068 | Aug 16 - Aug 31 | 1 |
| 072, 073, 074 | Aug 25 - Sept 16 | 4 |
| 076, 077, 079, 081 | Aug 25 - Sept 16 | 1 |
| 078, 105 - 107, 109 | Sept 1 - Sept 20 | 1 |
| 104, 108 ^B , 121 | Aug 25 - Sept 16 | 1 |
| 108 ^C , 131, 132 | Aug 25 - Sept 16 | 1 |
| 111 - 115 | Aug 25 - Sept 16 | 3 |
| 161 - 164, 171 - 173 | Sept 17 - Sept 30 | 1 |
| 221 - 223 | Aug 25 - Sept 16 | 3 |
| 231 | Aug 25 - Sept 16 | 1 |

^B That portion of Unit 108 north of the Falcon to Gonder powerline.

^C That portion of Unit 108 south of the Falcon to Gonder powerline.

MUZZLELOADER

| UNIT GROUP | SEASON DATES | 2022 QUOTA |
|-----------------------------|-------------------|------------|
| 061, 071 | Sept 1 - Sept 16 | 1 |
| 062, 064, 066-068 | Sept 1 - Sept 16 | 1 |
| 072, 073, 074 | Sept 17 - Sept 30 | 1 |
| 076, 077, 079, 081 | Oct 22 - Nov 5 | 1 |
| 078, 105 - 107, 109 | Oct 5 - Oct 21 | 1 |
| 104, 108 ^B , 121 | Oct 22 - Nov 5 | 2 |
| 111 - 115 | Oct 22 - Nov 5 | 2 |
| 161 - 164, 171 - 173 | Oct 22 - Nov 5 | 1 |
| 221 - 223 | Oct 22 - Nov 5 | 2 |
| 231 | Oct 22 - Nov 5 | 1 |

^B That portion of Unit 108 north of the Falcon to Gonder powerline.

NONRESIDENT

ELK HUNTS

ANTLERLESS

| ANY LEGAL WEAPON | | |
|-----------------------------------|-----------------|------------|
| UNIT GROUP | SEASON DATES | 2022 QUOTA |
| 061, 071 Early | Sept 17 - Oct 4 | 18 |
| 061, 071 Late | Nov 6 - Jan 1 | 16 |
| 062 | Sept 17 - Oct 4 | 8 |
| 062, 066 ^A Late | Nov 6 - Jan 1 | New Hunt |
| 072, 073, 074 Early | Oct 1 - Oct 20 | 5 |
| 072 - 075 Late | Nov 21 - Jan 1 | 4 |
| 076, 077, 079, 081 Early | Oct 1 - Oct 20 | New Hunt |
| 076, 077, 079, 081 Late | Dec 5 - Jan 1 | New Hunt |
| 078, 107 Early | Sept 21 - Oct 4 | New Hunt |
| 105, 106, 109 Early | Sept 21 - Oct 4 | New Hunt |
| 078, 105 - 107, 109 Late | Nov 21 - Jan 1 | New Hunt |
| 104, 108 ^B , 121 Early | Sept 25 - Oct 4 | 4 |
| 104, 108 ^B , 121 Late | Dec 5 - Jan 1 | 3 |
| 108 ^C , 131, 132 | Sept 25 - Oct 4 | 2 |
| 111, 112 Early | Sept 25 - Oct 4 | 5 |
| 111, 112 Late | Dec 5 - Jan 1 | 5 |
| 113 Early | Sept 25 - Oct 4 | 2 |
| 113 Late | Dec 5 - Jan 1 | 2 |
| 113 N ^D | Jan 2 - Jan 31 | 2 |
| 114, 115 Early | Sept 25 - Oct 4 | 6 |
| 114, 115 Late | Dec 5 - Jan 1 | 6 |
| 161 - 164 Early | Oct 1 - Oct 20 | 4 |
| 161 - 164 Late | Dec 5 - Jan 1 | 6 |
| 221 Early | Sept 25 - Oct 4 | 4 |
| 221 Late | Dec 5 - Jan 1 | 2 |
| 222, 223 Early | Sept 25 - Oct 4 | 4 |
| 222, 223 Late | Dec 5 - Jan 1 | 4 |
| 231 Early | Sept 25 - Oct 4 | 3 |
| 231 Late | Dec 5 - Jan 1 | 4 |

^A That portion of Unit 066 east and north of the South Fork of the Owyhee River.

^B That portion of Unit 108 north of the Falcon to Gonder powerline.

^C That portion of Unit 108 south of the Falcon to Gonder powerline.

^D That portion of Unit 113 north of White Pine County Road 35.

| ARCHERY | | |
|-----------------------------|----------------|------------|
| UNIT GROUP | SEASON DATES | 2022 QUOTA |
| 061, 071 | Aug 1 - Aug 15 | 7 |
| 062 | Aug 1 - Aug 15 | 2 |
| 072, 073, 074 | Aug 1 - Aug 24 | 2 |
| 076, 077, 079, 081 | Aug 1 - Aug 24 | 2 |
| 078, 105 - 107, 109 | Aug 1 - Aug 15 | 3 |
| 104, 108 ^B , 121 | Aug 1 - Aug 24 | 2 |
| 108 ^C , 131, 132 | Aug 1 - Aug 24 | 2 |
| 111, 112 | Aug 1 - Aug 24 | 2 |
| 113 | Aug 1 - Aug 24 | 2 |
| 114, 115 | Aug 1 - Aug 24 | 2 |
| 161 - 164 | Aug 1 - Aug 24 | 2 |
| 221 - 223 | Aug 1 - Aug 24 | 2 |
| 231 | Aug 1 - Aug 24 | 2 |

^B That portion of Unit 108 north of the Falcon to Gonder powerline.

^C That portion of Unit 108 south of the Falcon to Gonder powerline.

| MUZZLELOADER | | |
|-----------------------------|-------------------|------------|
| UNIT GROUP | SEASON DATES | 2022 QUOTA |
| 072, 073, 074 | Sept 17 - Sept 30 | 2 |
| 076, 077, 079, 081 | Sept 17 - Sept 30 | 2 |
| 078, 105 - 107, 109 | Aug 16 - Aug 31 | 3 |
| 104, 108 ^B , 121 | Sept 17 - Sept 24 | 2 |
| 108 ^C , 131, 132 | Sept 17 - Sept 24 | 2 |
| 111, 112 | Sept 17 - Sept 24 | 2 |
| 113 | Sept 17 - Sept 24 | 2 |
| 114, 115 | Sept 17 - Sept 24 | 2 |
| 161 - 164 | Aug 25 - Sept 16 | 2 |
| 221 - 223 | Sept 17 - Sept 24 | 2 |
| 231 | Sept 17 - Sept 24 | 2 |

^B That portion of Unit 108 north of the Falcon to Gonder powerline.

^C That portion of Unit 108 south of the Falcon to Gonder powerline.

NEVADA

MULE DEER HUNTS

(NAC 503.170)



RESIDENT

JUNIOR MULE DEER HUNTS - NAC 502.063, NAC 502.333

ANTLERED OR ANTLERLESS

| ARCHERY, MUZZLELOADER, OR ANY LEGAL WEAPON | | | |
|--|---|--|------------|
| UNIT GROUP | WEAPON | SEASON DATES | 2022 QUOTA |
| 061, 062, 064, 066 - 068 | Archery Muzzleloader Any Legal Weapon | Aug 10 - Sept 9 Sept 10 - Oct 4 Oct 5 - Nov 2 | 480 |
| 071 - 079, 091 | Archery Muzzleloader Any Legal Weapon | Aug 10 - Sept 9 Sept 10 - Oct 4 Oct 5 - Nov 2 | 360 |
| 101 - 109 | Archery Muzzleloader Any Legal Weapon | Aug 10 - Sept 9 Sept 10 - Sept 30 Oct 1 - Nov 2" | 600 |

RESIDENT

JUNIOR MULE DEER HUNTS

ANTLERED ONLY

| ARCHERY, MUZZLELOADER, OR ANY LEGAL WEAPON | | | |
|--|---|--|------------|
| UNIT GROUP | WEAPON | SEASON DATES | 2022 QUOTA |
| 011 - 013 | Archery Muzzleloader Any Legal Weapon | Aug 10 - Sept 9 Sept 10 - Oct 4 Oct 5 - Nov 5 | 30 |
| 014 | Archery Muzzleloader Any Legal Weapon | Aug 10 - Sept 9 Sept 10 - Oct 4 Oct 5 - Nov 5 | 2 |
| 015 | Archery Muzzleloader Any Legal Weapon | Aug 10 - Sept 9 Sept 10 - Oct 4 Dec 11 - Jan 1 | 5 |
| 021 | Archery Muzzleloader Any Legal Weapon | Dec 1 - Dec 10 Dec 11 - Dec 20 Dec 21 - Jan 1 | 15 |
| 022 | Archery Muzzleloader Any Legal Weapon | Aug 10 - Sept 9 Sept 10 - Oct 4 Oct 5 - Nov 5 | 15 |
| 031 | Archery Muzzleloader Any Legal Weapon | Aug 10 - Sept 9 Sept 10 - Oct 4 Oct 5 - Nov 5 | 35 |
| 032 | Archery Muzzleloader Any Legal Weapon | Aug 10 - Sept 9 Sept 10 - Oct 4 Oct 5 - Nov 5 | 40 |
| 033 | Archery Muzzleloader Any Legal Weapon | Aug 10 - Sept 9 Sept 10 - Oct 4 Oct 5 - Nov 5 | 6 |
| 034 | Archery Muzzleloader Any Legal Weapon | Aug 10 - Sept 9 Sept 10 - Oct 4 Oct 5 - Nov 5 | 5 |
| 035 | Archery Muzzleloader Any Legal Weapon | Aug 10 - Sept 9 Sept 10 - Oct 4 Oct 5 - Nov 5 | 25 |
| 041, 042 | Archery Muzzleloader Any Legal Weapon | Aug 10 - Sept 9 Sept 10 - Oct 4 Oct 5 - Nov 5 | 15 |
| 043, 044, 046 | Archery Muzzleloader Any Legal Weapon | Aug 10 - Sept 9 Sept 10 - Oct 4 Oct 5 - Nov 5 | 70 |
| 045 | Archery Muzzleloader Any Legal Weapon | Aug 10 - Sept 9 Sept 10 - Oct 4 Oct 5 - Nov 5 | New Hunt |
| 051 | Archery Muzzleloader Any Legal Weapon | Aug 10 - Sept 9 Sept 10 - Oct 4 Oct 5 - Nov 5 | 65 |
| 065 | Archery Muzzleloader Any Legal Weapon | Aug 10 - Sept 9 Sept 10 - Oct 4 Oct 5 - Nov 5 | 15 |
| 081 | Archery Muzzleloader Any Legal Weapon | Nov 10 - Nov 20 Nov 21 - Dec 10 Dec 11 - Jan 1 | 20 |
| 111 - 113 | Archery Muzzleloader Any Legal Weapon | Aug 10 - Sept 9 Sept 10 - Oct 4 Oct 5 - Nov 2 | 90 |
| 114, 115 | Archery Muzzleloader Any Legal Weapon | Aug 10 - Sept 9 Sept 10 - Oct 4 Oct 5 - Nov 2 | 30 |
| 121 | Archery Muzzleloader Any Legal Weapon | Aug 10 - Sept 9 Sept 10 - Oct 4 Oct 5 - Nov 2 | 15 |
| 131 - 134 | Archery Muzzleloader Any Legal Weapon | Aug 10 - Sept 9 Sept 10 - Oct 4 Oct 5 - Oct 31 | 20 |

| ARCHERY, MUZZLELOADER, OR ANY LEGAL WEAPON (CONTINUED) | | | |
|--|---|---|------------|
| UNIT GROUP | WEAPON | SEASON DATES | 2022 QUOTA |
| 141 - 145 | Archery Muzzleloader Any Legal Weapon | Aug 10 - Sept 9 Sept 10 - Oct 4 Oct 5 - Nov 2 | 190 |
| 151 - 156 | Archery Muzzleloader Any Legal Weapon | Aug 10 - Sept 9 Sept 10 - Oct 4 Oct 5 - Nov 2 | 100 |
| 161 - 164 | Archery Muzzleloader Any Legal Weapon | Aug 10 - Sept 9 Sept 10 - Oct 4 Oct 5 - Nov 2 | 45 |
| 171 - 173 | Archery Muzzleloader Any Legal Weapon | Aug 10 - Sept 9 Sept 10 - Oct 4 Oct 5 - Nov 2 | 170 |
| 181 - 184 | Archery Muzzleloader Any Legal Weapon | Aug 10 - Sept 9 Sept 10 - Oct 4 Oct 5 - Nov 2 | 70 |
| 192 | Archery Muzzleloader Any Legal Weapon | Aug 10 - Sept 9 Sept 10 - Oct 4 Nov 5 - Nov 30 | 25 |
| 194, 196 | Archery Muzzleloader Any Legal Weapon | Aug 10 - Sept 9 Sept 10 - Oct 4 Nov 5 - Nov 30 | 20 |
| 195 | Archery Muzzleloader Any Legal Weapon | Aug 10 - Sept 9 Sept 10 - Oct 4 Oct 5 - Nov 2 | 10 |
| 201, 204 | Any Legal Weapon Muzzleloader Archery | Nov 5 - Nov 30 Dec 1 - Dec 15 Dec 16 - Jan 1 | 7 |
| 202, 205 - 208 | Any Legal Weapon Muzzleloader Archery | Nov 5 - Nov 30 Dec 1 - Dec 15 Dec 16 - Jan 1 | 20 |
| 203 ^A | Archery Any Legal Weapon | Aug 10 - Sept 9 Nov 5 - Nov 30 | 20 |
| 211 - 213 | Archery Muzzleloader Any Legal Weapon | Aug 10 - Sept 9 Sept 10 - Oct 10 Nov 5 - Nov 30 | 15 |
| 221 - 223 | Archery Muzzleloader Any Legal Weapon | Aug 10 - Sept 9 Sept 10 - Oct 4 Oct 5 - Oct 31 | 60 |
| 231 | Archery Muzzleloader Any Legal Weapon | Aug 10 - Sept 9 Sept 10 - Oct 4 Oct 5 - Oct 31 | 20 |
| 241 - 245 | Archery Muzzleloader Any Legal Weapon | Aug 10 - Sept 9 Sept 10 - Oct 4 Oct 5 - Oct 31 | 20 |
| 251 - 254 | Archery Muzzleloader Any Legal Weapon | Aug 10 - Sept 9 Sept 10 - Oct 4 Oct 5 - Nov 2 | 5 |
| 261 - 268 | Archery Muzzleloader Any Legal Weapon | Aug 10 - Sept 9 Sept 10 - Oct 4 Nov 5 - Nov 30 | 30 |
| 271, 272 | Archery Muzzleloader Any Legal Weapon | Aug 10 - Sept 9 Sept 10 - Oct 4 Nov 5 - Nov 30 | 10 |
| 291 | Archery Muzzleloader Any Legal Weapon | Aug 10 - Sept 9 Sept 10 - Oct 4 Nov 5 - Nov 30 | 25 |

^A Special Restrictions apply, see NAC 503.170

ATTENTION JUNIOR HUNTERS!

Antlered Only: Most of the Junior mule deer hunts are now antlered only except for the following unit groups 061, 062, 064, 066-068; 071 - 079, 091; and 101- 109, which will remain antlered or antlerless.

Juniors and Bonus Points: An 11-year-old junior hunter who will turn 12 before the beginning of the last junior hunt season is eligible to purchase a bonus point.

RESIDENT AND NONRESIDENT

MULE DEER HUNTS

ANTLERED

ANY LEGAL WEAPON

| UNIT GROUP | SEASON DATES | RESIDENT DEER 2022 QUOTAS | NONRESIDENT DEER 2022 QUOTAS |
|--------------------------------|-----------------|------------------------------|---------------------------------|
| 011 - 013 | Oct 5 - Nov 5 | 50 | 3 |
| 014 | Oct 5 - Nov 5 | 8 | 1 |
| 015 | Dec 11 - Jan 1 | 15 | 2 |
| 021 | Dec 21 - Jan 1 | 30 | 2 |
| 022 | Oct 5 - Nov 5 | 35 | 2 |
| 031 | Oct 5 - Nov 5 | 90 | 4 |
| 032 | Oct 5 - Nov 5 | 70 | 7 |
| 033 | Oct 5 - Nov 5 | 15 | 2 |
| 034 | Oct 5 - Nov 5 | 20 | 2 |
| 035 | Oct 5 - Nov 5 | 30 | 2 |
| 041, 042 | Oct 5 - Nov 5 | 8 | 1 |
| 043, 044, 046 | Oct 5 - Nov 5 | New Hunt | New Hunt |
| 045 | Oct 5 - Nov 5 | New Hunt | New Hunt |
| 051 | Oct 5 - Nov 5 | 160 | 8 |
| 061, 062, 064, 066 - 068 Early | Oct 5 - Oct 20 | 1,150 | 65 |
| 061, 062, 064, 066 - 068 Late | Oct 21 - Nov 5 | 140 | 9 |
| 065 | Oct 5 - Nov 5 | 35 | 4 |
| 071 - 079, 091 Early | Oct 5 - Oct 20 | 750 | 40 |
| 071 - 079, 091 Late | Oct 21 - Nov 5 | 190 | 9 |
| 081 | Dec 11 - Jan 1 | 40 | 2 |
| 101 - 109 Early | Oct 1 - Oct 16 | 1,050 | 75 |
| 101 - 109 Mid | Oct 17 - Oct 30 | 1,050 | 65 |
| 101 - 109 Late | Oct 31 - Nov 8 | 180 | 10 |
| 111 - 113 Early | Oct 5 - Oct 20 | 200 | 13 |
| 111 - 113 Late | Oct 21 - Nov 5 | 20 | 2 |
| 114, 115 Early | Oct 5 - Oct 20 | 60 | 6 |
| 114, 115 Late | Oct 21 - Nov 5 | 5 | 2 |
| 115 | Dec 1 - Dec 15 | 5 | 2 |
| 121 Early | Oct 5 - Oct 20 | 40 | 2 |
| 121 Late | Oct 21 - Nov 5 | 5 | 2 |
| 131 - 134 Early | Oct 5 - Oct 20 | 45 | 2 |
| 131 - 134 Late | Oct 21 - Nov 5 | 4 | 2 |
| 141 - 145 Early | Oct 5 - Oct 20 | 270 | 23 |
| 141 - 145 Late | Oct 21 - Nov 5 | 35 | 3 |
| 151 - 156 Early | Oct 5 - Oct 20 | 200 | 15 |
| 151 - 156 Late | Oct 21 - Nov 5 | 20 | 1 |
| 161 - 164 Early | Oct 5 - Oct 20 | 110 | 3 |
| 161 - 164 Late | Oct 21 - Nov 5 | 10 | 2 |
| 171 - 173 Early | Oct 5 - Oct 16 | 270 | 25 |
| 171 - 173 Mid | Oct 17 - Oct 30 | 180 | 10 |
| 171 - 173 Late | Oct 31 - Nov 8 | 30 | 2 |
| 181 - 184 | Oct 5 - Nov 5 | 150 | 8 |
| 192 | Nov 5 - Nov 30 | 55 | 4 |
| 194, 196 | Nov 5 - Nov 30 | 35 | 2 |

RESIDENT AND NONRESIDENT

MULE DEER HUNTS

ANTLERED (CONTINUED)

ANY LEGAL WEAPON (CONTINUED)

| UNIT GROUP | SEASON DATES | RESIDENT DEER 2022 QUOTAS | NONRESIDENT DEER 2022 QUOTAS |
|------------------|-----------------|------------------------------|---------------------------------|
| 195 | Oct 5 - Nov 2 | 25 | 2 |
| 201, 204 | Nov 5 - Nov 30 | 20 | 2 |
| 202, 205 - 208 | Nov 5 - Nov 30 | 40 | 2 |
| 203 ^A | Nov 5 - Nov 30 | 30 | 2 |
| 211 - 213 | Nov 5 - Nov 30 | 25 | 3 |
| 221 - 223 Early | Oct 5 - Oct 16 | 90 | 2 |
| 221 - 223 Mid | Oct 17 - Oct 30 | 55 | 2 |
| 221 - 223 Late | Oct 31 - Nov 8 | 7 | 2 |
| 231 | Oct 5 - Oct 31 | 45 | 2 |
| 241 - 245 | Oct 5 - Oct 31 | 45 | 2 |
| 251 - 254 | Oct 5 - Nov 2 | 10 | 2 |
| 261 - 268 | Nov 5 - Nov 30 | 60 | 3 |
| 271, 272 | Nov 5 - Nov 30 | 25 | 2 |
| 291 | Nov 5 - Nov 30 | 55 | 4 |

^A Special restrictions apply see NAC 503.170.

ARCHERY

| UNIT GROUP | SEASON DATES | RESIDENT DEER 2022 QUOTAS | NONRESIDENT DEER 2022 QUOTAS |
|--------------------------|-----------------|------------------------------|---------------------------------|
| 011 - 013 | Aug 10 - Sept 9 | 15 | 2 |
| 014 | Aug 10 - Sept 9 | 2 | 1 |
| 015 | Aug 10 - Sept 9 | 3 | 2 |
| 021 | Dec 1 - Dec 10 | 15 | 2 |
| 022 | Aug 10 - Sept 9 | 6 | 2 |
| 031 | Aug 10 - Sept 9 | 15 | 2 |
| 032 | Aug 10 - Sept 9 | 30 | 3 |
| 033 | Aug 10 - Sept 9 | 5 | 2 |
| 034 | Aug 10 - Sept 9 | 5 | 2 |
| 035 | Aug 10 - Sept 9 | 20 | 2 |
| 041, 042 | Aug 10 - Sept 9 | 15 | 2 |
| 043, 044, 046 | Aug 10 - Sept 9 | New Hunt | New Hunt |
| 045 | Aug 10 - Sept 9 | New Hunt | New Hunt |
| 051 | Aug 10 - Sept 9 | 25 | 3 |
| 061, 062, 064, 066 - 068 | Aug 10 - Sept 9 | 330 | 35 |
| 065 | Aug 10 - Sept 9 | 10 | 2 |
| 071 - 079, 091 Early | Aug 10 - Sept 9 | 240 | 25 |
| 071 - 079, 091 Late | Nov 10 - Nov 20 | 30 | 3 |
| 081 Early | Aug 10 - Sept 9 | New Hunt | New Hunt |
| 081 Late | Nov 10 - Nov 20 | 5 | 2 |
| 101 - 109 Early | Aug 10 - Sept 9 | 690 | 70 |
| 101 - 109 Late | Nov 10 - Nov 20 | 30 | 3 |
| 111 - 113 | Aug 10 - Sept 9 | 30 | 3 |
| 114, 115 | Aug 10 - Sept 9 | 70 | 7 |
| 121 Early | Aug 10 - Sept 9 | 4 | 2 |
| 121 Late | Nov 10 - Nov 20 | 2 | 2 |
| 131 - 134 | Aug 10 - Sept 9 | 6 | 2 |
| 141 - 145 | Aug 10 - Sept 9 | 220 | 23 |

RESIDENT AND NONRESIDENT

MULE DEER HUNTS

ANTLERED (CONTINUED)

ARCHERY (CONTINUED)

| UNIT GROUP | SEASON DATES | RESIDENT DEER 2022 QUOTAS | NONRESIDENT DEER 2022 QUOTAS |
|---------------------------|-----------------|------------------------------|---------------------------------|
| 151 - 156 | Aug 10 - Sept 9 | 60 | 7 |
| 161 - 164 | Aug 10 - Sept 9 | 50 | 6 |
| 171 - 173 | Aug 10 - Sept 9 | 240 | 25 |
| 181 - 184 | Aug 10 - Sept 9 | 60 | 6 |
| 192 Early | Aug 10 - Sept 9 | 15 | 2 |
| 192 Late | Dec 1 - Jan 1 | 20 | 3 |
| 194, 196 Early | Aug 10 - Sept 9 | 6 | 2 |
| 194, 196 Late | Dec 1 - Jan 1 | 9 | 2 |
| 195 | Aug 10 - Sept 9 | 5 | 2 |
| 201, 202, 204 - 208 Early | Aug 10 - Sept 9 | 5 | 2 |
| 201, 204 Late | Dec 16 - Jan 1 | 5 | 2 |
| 202, 205 - 208 Late | Dec 16 - Jan 1 | 5 | 2 |
| 203 Early | Aug 10 - Sept 9 | 15 | 2 |
| 203 Late | Dec 16 - Jan 1 | 15 | 2 |
| 211 - 213 | Aug 10 - Sept 9 | 10 | 2 |
| 221 - 223 | Aug 10 - Sept 9 | 20 | 2 |
| 231 | Aug 10 - Sept 9 | 8 | 2 |
| 241 - 245 | Aug 10 - Sept 9 | 4 | 2 |
| 251 - 254 | Aug 10 - Sept 9 | 5 | 2 |
| 261 - 268 | Aug 10 - Sept 9 | 10 | 2 |
| 271, 272 | Aug 10 - Sept 9 | 10 | 2 |
| 291 | Aug 10 - Sept 9 | 15 | 2 |

MUZZLELOADER

| UNIT GROUP | SEASON DATES | RESIDENT DEER 2022 QUOTAS | NONRESIDENT DEER 2022 QUOTAS |
|--------------------------|-------------------|------------------------------|---------------------------------|
| 011 - 013 | Sept 10 - Oct 4 | 7 | 2 |
| 014 | Sept 10 - Oct 4 | 2 | 1 |
| 015 | Sept 10 - Oct 4 | 5 | 1 |
| 021 | Dec 11 - Dec 20 | 5 | 2 |
| 022 | Sept 10 - Oct 4 | 5 | 2 |
| 031 | Sept 10 - Oct 4 | 4 | 2 |
| 032 | Sept 10 - Oct 4 | 7 | 2 |
| 033 | Sept 10 - Oct 4 | 5 | 2 |
| 034 | Sept 10 - Oct 4 | 2 | 2 |
| 035 | Sept 10 - Oct 4 | 3 | 2 |
| 041, 042 | Sept 10 - Oct 4 | 10 | 2 |
| 043, 044, 046 | Sept 10 - Oct 4 | New Hunt | New Hunt |
| 045 | Sept 10 - Oct 4 | New Hunt | New Hunt |
| 051 | Sept 10 - Oct 4 | 20 | 2 |
| 061, 062, 064, 066 - 068 | Sept 10 - Oct 4 | 110 | 8 |
| 065 | Sept 10 - Oct 4 | 5 | 2 |
| 071 - 079, 091 | Sept 10 - Oct 4 | 80 | 5 |
| 081 | Nov 21 - Dec 10 | 15 | 2 |
| 101 - 109 | Sept 10 - Sept 30 | 220 | 16 |
| 111 - 113 | Sept 10 - Oct 4 | 10 | 2 |
| 114, 115 | Nov 10 - Nov 30 | 20 | 2 |

RESIDENT AND NONRESIDENT

MULE DEER HUNTS

ANTLERED (CONTINUED)

MUZZLELOADER (CONTINUED)

| UNIT GROUP | SEASON DATES | RESIDENT DEER 2022 QUOTAS | NONRESIDENT DEER 2022 QUOTAS |
|----------------|------------------|------------------------------|---------------------------------|
| 121 | Sept 10 - Oct 4 | 3 | 2 |
| 131 - 134 | Sept 10 - Oct 4 | 5 | 2 |
| 141 - 145 | Sept 10 - Oct 4 | 20 | 2 |
| 151 - 156 | Sept 10 - Oct 4 | 9 | 1 |
| 161 - 164 | Sept 10 - Oct 4 | 15 | 3 |
| 171 - 173 | Sept 10 - Oct 4 | 65 | 6 |
| 181 - 184 | Nov 10 - Nov 30 | 15 | 2 |
| 192 | Sept 10 - Oct 4 | 10 | 3 |
| 194, 196 | Sept 10 - Oct 4 | 5 | 1 |
| 195 | Sept 10 - Oct 4 | 5 | 1 |
| 201, 204 | Dec 1 - Dec 15 | 2 | 2 |
| 202, 205 - 208 | Dec 1 - Dec 15 | 5 | 2 |
| 211 - 213 | Sept 10 - Oct 10 | 6 | 2 |
| 221 - 223 | Sept 10 - Oct 4 | 5 | 2 |
| 231 | Sept 10 - Oct 4 | 4 | 2 |
| 241 - 245 | Sept 10 - Oct 4 | 3 | 2 |
| 251 - 254 | Sept 10 - Oct 4 | 2 | 2 |
| 261 - 268 | Sept 10 - Oct 4 | 10 | 2 |
| 271, 272 | Sept 10 - Oct 4 | 10 | 2 |
| 291 | Sept 10 - Oct 4 | 3 | 2 |

RESIDENT

MULE DEER HUNTS

ANTLERLESS

ANY LEGAL WEAPON

| UNIT GROUP | SEASON DATES | 2022 QUOTAS |
|--------------------------------|-----------------|-------------|
| 061, 062, 064, 066 - 068 Early | Oct 10 - Oct 31 | 270 |
| 062, 067, 068 Late | Nov 6 - Nov 20 | 270 |
| 071 - 079, 091 | Oct 10 - Oct 31 | 105 |
| 101, 102, 109 | Oct 5 - Oct 20 | 50 |



NEVADA

MOUNTAIN LION HUNTS

(NAC 502.370)

RESIDENT AND NONRESIDENT (CR 23-06)

MOUNTAIN LION HUNTS

EITHER SEX

ANY LEGAL WEAPON

| UNIT GROUP | HARVEST LIMIT |
|--|---------------|
| Statewide except units 033, 269, 280, 281, 282, 283, 284, 286. | 247 |

- Hunting hours are any time day or night.
- A hunter, or their licensed guide or subguide if applicable, must call the mountain lion hotline at 1-800-800-1667 prior to hunting to determine if a unit group is open or closed.
- * Unit 091 is an Interstate hunt with Utah. Nevada and Utah hunters may hunt within open units in both states (Nevada Unit 091, Utah Unit 1C). Nevada hunters hunting in Utah must abide by Utah regulations and season dates on the Utah portion of the hunt area.



NEVADA

BLACK BEAR HUNTS

RESIDENT AND NONRESIDENT (CR 23-05)

BLACK BEAR HUNTS

EITHER SEX (NAC 502.373)

| UNIT GROUP | SEASON DATES | RESIDENT BLACK BEAR 2022 QUOTA | NONRESIDENT BLACK BEAR 2022 QUOTA | TOTAL HARVEST LIMIT 2022 | TOTAL FEMALE HARVEST LIMIT 2022 |
|--|---|--------------------------------|-----------------------------------|--------------------------|---------------------------------|
| 192*, 194*, 195, 196 except those portions of 192 and 194 described in Special Regulations | Sept 15 - Dec 1 (or until harvest limits are met) | 45 | 5 | 6 | 3 |
| 201 - 202, 204, 206 | | | | 6 | 2 |
| 203, 291 | | | | 8 | 3 |

Special Regulations:

- The limit is one animal per tag.
- Hunting hours are one-half hour before sunrise to one-half hour after sunset.
- Tag holders, or their licensed guide if applicable, must call the Black Bear Harvest Information Hotline prior to hunting to determine if the hunt has been closed due to the harvest objective being reached. The number is 1-800-800-1667 and is accessible 24 hours a day.
- Attendance at one of the annual black bear indoctrination classes is mandatory for tag holders or their representative guides or sub-guides. A person represented by a guide or sub-guide at the indoctrination may only hunt under the direct supervision of the guide or sub-guide who attended the class for them. Tags will only be issued upon completion of one indoctrination class. An in-person Black bear indoctrination course is scheduled for Saturday August 5 from 1 pm to 4 pm at the Nevada Department of Wildlife's conference room, 1100 Valley Road, Reno, Nevada. A Virtual Zoom Indoctrination Course is scheduled for Saturday, August 19, 2023, from 1 pm to 4 pm. The Virtual Zoom Indoctrination Course will be recorded and available for First Come First Serve tagholders. The Department will provide all tag holders with directions for registration prior to August 5, 2023.
- The Department phone number to call and report a harvested black bear is 775-688-BEAR. Leave a message.
- It is unlawful to harvest a sow with a cub.

Note: The sale of a bear gallbladders is unlawful (Refer to NAC 503.174).

ATTENTION

Successful bear hunters that have their harvest physically inspected at a Department office will not be required to return a big game harvest questionnaire. Unsuccessful bear hunters will still need to complete the big game harvest questionnaire.

* Those areas within Units 192 and 194 that are within the U.S. Forest Service Lake Tahoe Basin Management Unit (LTBMU) and those areas bounded on the west by the LTBMU boundary from the southern boundary of Township 16 North, Range 18 East, Section 13 to the Mount Rose Wilderness Area boundary (approximately located at the Relay Ridge Radio Tower), by the Mount Rose Wilderness Area boundary from the LTBMU boundary to the western boundary of Range 19 East, and by the western boundary of Range 19 East from the Mount Rose Wilderness Area boundary to USFS Road No. 41049 (Logan Meadow Lane/Thomas Creek), bounded on the north by USFS Road No. 41049 from the western boundary of Range 19 East to Timberline Drive, by Timberline Drive from its junction with USFS Road No. 41049 to State Highway 431 (Mount Rose Highway), and by State Highway 431 from its junction with Timberline Drive to its junction with U.S. Highway 395, bounded on the east by U.S. Highway 395 from its junction with State Highway 431 to the southern boundary of Township 16 North, Range 19 East, Section 14 (approximately located at the northbound Bellevue Interchange off-ramp), and bounded on the south by the southern edge of Township 16 North, Range 19 East, Sections 14 - 18, following the southern boundary of the University of Nevada, Reno Little Valley Study Area, and Township 16 North, Range 18 East, Section 13 to the LTBMU boundary.



Animal Artistry

ANIMALARTISTRY.COM | THEARTOFTHEANIMAL.COM | 775-323-0203 |
1190 TERMINAL WAY, RENO, NV

We Finish the Hunt

"Your experience doesn't end with the kill.

At Animal Artistry, we create works of art that complete and extend the hunt, bringing cherished memories back to you each time you view your trophies. We honor the hunt, the hunter, and most importantly, the majestic creatures."

Michael J. Boyce



Deer Shoulder Mounts: \$725
Antelope Shoulder Mounts: \$725
Elk Shoulder Mounts: \$1,495



***We will get you there,
you do the rest!***



SONOMA CYCLE
MINNEAPOLIS, MN

1-800-575-9709



WALL TENT SHOP



Wilderness Tents
Free Shipping



Montana Tents
Free Shipping



Spike Tents
Free Shipping



Wilderness Stoves



Yukon Stoves

Free Shipping on Tent, Stove,
Angle Kit and Fly packages

Mention this ad and receive a
\$5 discount on any purchase!

www.walltentshop.com • 800-234-1150
support@walltentshop.com

White River 
Guide Service

**BIGHORN SHEEP • ELK
MULE DEER • ANTELOPE
MOUNTAIN LION**






*We know what it takes to be successful
and our goal is simple. We want to
help you have the hunt of a lifetime
and the opportunity to take the trophy
of a lifetime. We specialize in Nevada
trophy big game hunts!*

Wade Ovard
2563 Vineyard Drive
Santa Clara, UT
435-229-4644
nv hunts@gmail.com
www.nvhunts.com

SPECIALTY TAGS

Specialty tags provide enhanced opportunities for hunters to experience the thrill of the chase outside of the conventional constraints set for the big game units and seasons. Not only are hunters rewarded with the potential for a hunt of a lifetime, but revenues generated from specialty tags are deposited into specific accounts designated solely for wildlife conservation projects that help the habitats, species and ultimately citizens of Nevada. Specialty tags may be awarded through the application and draw process or purchased through an event auction and provide the tag holder perks that include but are not limited to longer season structures, potential to obtain multiple tags in a year for a single species, the ability to utilize any open unit of our great state, and no loss of bonus points for the acquisition of a tag.

An applicant can only obtain one tag per species, this includes Partnership in Wildlife (PIW) and Silver State tags. A person can be awarded and purchase a tag of the same species outside of the draw, this includes the Heritage and Dream tag options. Winners of the Dream tag must return their Department awarded tag only if both the Dream and Department tag match in species and category. Ex) A person may keep their Antlerless Elk tag if they are the winner of the Antlered Elk Dream tag. A person must return their Antlered Elk tag if they are the winner of the Antlered Elk Dream tag.

Alternate or party hunt options are not available for any specialty tag. Specialty tag quotas are not restricted by residency except PIW mule deer.

| SPECIALTY TAGS | HERITAGE | DREAM | SILVER STATE | PIW |
|------------------------------------|----------|-------|--------------|-----|
| Available in the Main Draw | | | ✓ | ✓ |
| Issued By 3rd Party Vendors | ✓ | ✓ | | |
| Weapon Not Restricted with Season | ✓ | ✓ | ✓ | |
| Longer Season Structure | ✓ | | ✓ | |
| Hunt Any Open Unit | ✓ | ✓ | ✓ | ✓ |
| Waiting Periods Do Not Apply | ✓ | ✓ | ✓ | |
| No Bonus Point Cost | ✓ | ✓ | ✓ | |
| Can Have Multiple Tags Per Species | ✓ | ✓ | | |

*PIW tags follow the general hunt seasons for the awarded species. Management and depredation hunt seasons are excluded as well as seasons for different classes such as spike elk.

2023 DREAM AND PARTNERSHIP IN WILDLIFE TAGS

| SPECIES | CLASS | SEASON | UNIT RESTRICTIONS | DREAM QUOTAS | PIW QUOTAS |
|---------------------------------|----------|--|--|--------------|----------------------------------|
| Antelope | Antlered | In Compliance with General Season Structures | None | 1 | 5 |
| Bighorn Sheep - Nelson | Ram | In Compliance with General Season Structures | Unit harvest limits based on approved quotas | 1 | 1 |
| Bighorn Sheep - CA (Dream only) | Ram | In Compliance with General Season Structures | Unit harvest limits based on approved quotas | 1 | 0 |
| Black Bear (Dream only) | Any | In Compliance with General Season Structures | None | 1 | 0 |
| Elk | Antlered | In Compliance with General Season Structures | 091 | 1 | 3 |
| Mule Deer | Antlered | In Compliance with General Season Structures | None | 1 | 22 - resident 3 - nonresident |

2023 HERITAGE AND SILVER STATE TAGS

| SPECIES | CLASS | SEASON | UNIT RESTRICTIONS | HERITAGE QUOTAS | SST QUOTAS |
|------------------------------------|----------|-----------------------------|--|-----------------|------------|
| Antelope | Antlered | Aug 1, 2023 - Dec 31, 2023 | None | 2 | 1 |
| Bighorn Sheep - Nelson | Ram | July 1, 2023 - Dec 31, 2023 | Unit harvest limits based on approved quotas | 2 | 1 |
| Bighorn Sheep - CA (Heritage only) | Ram | July 1, 2023 - Dec 31, 2023 | Unit harvest limits based on approved quotas | 1 | 0 |
| Elk | Antlered | Aug 1, 2023 - Dec 31, 2023 | 091 | 2 | 1 |
| Mountain Goat (Silver State only) | Any | July 1, 2023 - Dec 31, 2023 | Only available in Unit 102 | 0 | 1 |
| Mule Deer | Antlered | Aug 1, 2023 - Dec 31, 2023 | None | 2 | 1 |
| Turkey (Heritage only) | Any | Mar 21, 2023 - May 3, 2023 | None | 5 | 0 |

**MAKE YOUR OWN WILD GAME
SUMMER SAUSAGE AND SALAMI.**

WE HAVE EVERYTHING YOU NEED TO PROCESS
YOUR MEAT INTO DELICIOUS SAUSAGE
RIGHT IN YOUR OWN HOME.



COMPLETE KITS STARTING AT \$13.95

Butcher & Packer Supply
P.O. Box 71748
Madison Heights, Michigan 48071

Call 1-800-521-3188
www.butcher-packer.com



Make Hunting & Fishing Dreams Come True!

Hunt of a Lifetime is a nonprofit organization that grants hunting and fishing dreams to children, age 21 and under, who have been diagnosed with life threatening illnesses.



If you are interested in helping a child live their dream, please contact us for more information.

Toll Free 814.572.4387 HuntofaLifetime.org



**Supporting The
Youth Hunters Of Nevada
Call for Day Camp Info**

battlebornha.org
775.750.9596 • eric.bbha@yahoo.com

SILVER STATE TAGS

- **No bonus points apply. Everybody has the same chance to win.**
- **Sportsmen may apply even if they are in a waiting period for sheep, elk, antelope or mountain goat.**
- **Open to both resident and nonresident hunters.**



JARBIDGE WILDERNESS GUIDE & PACKING



Unmatched all-inclusive guided hunts where the dirt roads end and the horse trails begin.



Elk
Mule Deer
Mountain Lion
Antelope
Summer Pack Trips



Contact Us!

Jarbridge Wilderness
Guide and Packing, LLC



O: 208.857.2270
C: 208.420.9629



www.jarbridge.com



lowellprunty
@gmail.com



Jarbridge
Wilderness Guide &
Packing





CAL Ranch

EVERY JOB. EVERY SEASON.

WE'LL BE HERE FOR YOU.

SHOP ONLINE
CALRANCH.COM

NEVADA | UTAH | IDAHO | ARIZONA

FOLLOW | SUBSCRIBE | LIKE



TIMBERLINE OUTFITTERS GUIDE SERVICE



*Servicing eastern
Nevada since 2000*



Thomas Brunson - (775) 296-0600
E: timberlineguide@sbcglobal.net
www.timberlineoutfittersnevada.com

EST. 2004

J.F. GRIFFIN
PUBLISHING

Showcase your business!



For advertising inquiries, please call
(413) 884-1001

Missed the printed edition?
Ask about year-round digital opportunities.



R BROS RIFLES
Washington, UT
435.922.0760



www.rbrosrifles.com

GENERAL APPLICATION INFORMATION

All hunt applications for big game tags must be submitted online at ndowlicensing.com. Initial draw results will be posted online at ndowlicensing.com no later than 48 hours after the completion of the draw. Draw results will be released once customer accounts have been updated.

A second drawing will be held for all big game tags that remain after the completion of the Main Draw. Eligible residents and nonresidents may apply for any remaining tags during the Second Draw application period, with the exception of the junior Mule Deer hunt tags, which will only be available to eligible resident applicants. Bonus points for ALL big game species will be available for purchase during the Second Draw application period.

Each applicant will need to apply and purchase licenses under their own account. Applications can be edited or withdrawn in a customer's account under the Application and Points section

up until the close of the application period. Applicants can choose up to five (5) different units and seasons per species and sex so long as there are five (5) different hunt choices available. Utilizing all five (5) choices is highly recommended to maximize an applicant's chances of receiving a tag.

A successful applicant will have seven (7) days to complete the payment of their tag directly following the results of a draw. If at the end of the seven (7) days a payment has not been completed, the successful applicant will be treated as if they received the tag in regard to waiting periods applied and bonus point costs while the tag will be offered to the next available alternate, subsequent draw, or for purchase in the First Come, First Served program.

The completion of a harvest return card is mandatory to any successful tag holder regardless of a successful take during the season. Applicants will be prevented from applying for a species in the following year's application period if they did not submit a return card for a tag held the prior year. Customers can complete the return card found in their account and pay a \$50 fee to lift the penalty and proceed with the current year's application.

| | APPLICATION OPENER | APPLICATION DEADLINE | RESULTS - PROVIDED ON OR BEFORE |
|------------------------------------|--------------------|----------------------|---------------------------------|
| Non-resident Guided Mule Deer Hunt | 2/6/2023 | 3/6/2023 | 3/17/2023 |
| Main Draw | 3/20/2023 | 5/10/2023 | 5/19/2023 |
| Second Draw | 6/5/2023 | 6/12/2023 | 6/23/2023 |

Win a \$100 Gift Card!

Take the monthly

TARGETSHOOTINGSURVEY.COM

HUNTERSURVEY.COM



And be entered to win a \$100 gift certificate to your sporting good retailer of choice.

Your anonymous participation advances fish and wildlife conservation, helps protect your right to hunt, fish and shoot, and guides companies in developing better outdoor products.





WESTERN RANGE CAMPS



Made in America

- **Rugged**
- **STEEL Frame**
- **Wood Burning Stove**
- **High Ground Clearance**
- **Built to Last**
- **Comfort in the Cold**
- **Go Farther**
- **Stay Longer**
- **Camp, Hunt and Fish with Greater Success!!**



1145 S. Blackhawk Blvd • Mt. Pleasant, Utah 84647

435-462-5300

www.wrcamps.com

2023 BIG GAME TAG APPLICATION ELIGIBILITY AND TAG LIMITS (CR 23-08)

BIG GAME TAG APPLICATION ELIGIBILITY

Except as otherwise provided by regulation, a person may only **apply** for one (1) big game tag per species or subspecies per draw application period, with the following exceptions:

- An eligible person may submit one (1) application for antlered mule deer and one (1) application for antlerless mule deer, or an eligible person may submit one (1) application for the junior antlered or antlerless mule deer hunt, per draw application period;
- An eligible person may submit one (1) application for pronghorn antelope horns longer than ears and one (1) application for pronghorn antelope horns shorter than ears per draw application period;
- An eligible person may submit one (1) application for antlered elk, one (1) application for antlered depredation elk, one (1) application for spike elk, and one (1) application for each type of antlerless elk, including antlerless elk, and antlerless depredation elk, per draw application period;
- An eligible person may submit one (1) application for ram bighorn sheep per subspecies and one (1) application for ewe bighorn sheep per subspecies per draw application period;

BIG GAME TAG LIMITS

Except as otherwise provided by regulation, a person may only **obtain** one (1) big game tag per species or subspecies per year, with the following exception:

- An eligible person may obtain Heritage tags, Mule Deer or Pronghorn Antelope Landowner Damage Compensation tags, Elk Incentive tags, and Antlerless Elk Landowner tags in addition to any tags obtained through a draw process.

BIG GAME SECOND DRAW ELIGIBILITY

A second drawing will be held for all mule deer, pronghorn antelope, black bear, elk, mountain goat and bighorn sheep tags that remain after the completion of the big game main draw process. Eligible residents and nonresidents may apply for **any** remaining tags during the big game second draw application period, with the exception of the junior mule deer and antlerless mule deer hunt tags, which will only be available to eligible resident applicants.

BIG GAME HUNT SURVEY

The issuance of a big game tag includes an online big game hunt survey that tag recipients are required to complete, regardless of whether or not they hunted or harvested big game. The big game hunt survey may be submitted online at ndowlicensing.com or by telephone at 1-855-542-6369.

Except as otherwise noted, successful hunters for bighorn sheep ram, mountain goat and bear who have their harvest physically inspected at a Department office will not be required to return a survey. (Refer to pages 14, 16 and 26)

Properly completed big game hunt surveys must be submitted before **5 p.m. (pacific time) on January 31** following the close of the hunt season for which the tag was issued, with the exception of hunts that end on or after January 31, which must be properly completed and submitted before 5 pm (pacific time) on February 28 following the close of the hunt season for which the tag was issued.

ALTERNATES

Selecting to be an alternate adds the applicant to a list of hunters willing to accept a tag exactly matching their first-choice application if one should be returned to the Department. Alternates are awarded by lowest assigned draw number provided in the Big Game Main Draw. An alternate can receive a tag anytime from when the results are released from the main draw up until 14 calendar days prior to the opening of the tag's hunt season. (NAC 502.4175 and 502.421 - CGR 490)

Alternates receiving their tag will not be notified by the Department. A customer's default credit card will be charged, and an email confirmation will be sent to the email address stored in your customer account. Tags are mailed from the time of purchase and alternates will receive their alternate tag in the mail within 7-10 business days.

FIRST COME, FIRST SERVED

Following the big game second draw, any remaining tag quotas with no eligible alternate will be available for purchase to eligible customers through a first come, first served basis. Remaining junior Mule Deer quotas will only be available to eligible junior residents. All big game application eligibility rules will apply to the purchase of a tag through the FCFS program and will only be available for purchase online at www.ndowlicensing.com. Customers must be at least 12 years old at the time of a FCFS purchase on a hunt season that is already in progress. A suspicious activity suspension from the FCFS program will be applied to any account found trying to attempt to create an unfair advantage or actively abuse the program. (NAC 502.4215)

BIG GAME APPLICATION SEMINARS

If you have questions about Nevada's tag application process, the Nevada Department of Wildlife has the answers. Classes will include the following topics: creating/updating your account, purchasing a license, navigating the application, party applications, linking accounts, bonus points individual /party, alternate option, and return cards and surveys.

Southern Nevada

March 29
6 p.m. – 8 p.m.
Clark County Shooting Complex
11357 North Decatur Blvd.,
Las Vegas, NV 89131

Western Nevada

April 6
6 p.m. – 8 p.m.
NDOW Valley Road Office
1100 Valley Road, Reno, NV 89512

To register go to register-ed.com/programs/nevada and click on the Advanced Hunter Education Program.



\$5 Could Win You the Hunt of a Lifetime!

Buy an unlimited number
of chances at NVDreamTag.org.

 Nevada
DREAM TAGS

NVDreamTag.org



CoolBot®
GET CONNECTED - STAY COOL™

BUILD YOUR OWN GAME OR MEAT COOLER

- Save \$1,000s by building your own walk-in cooler
- Cool a well insulated room down to 34 degrees with a CoolBot and window air conditioner
- Perfect for meat curing and aging
- Over 100,000 units sold in 70 different countries

Go to eregulations.com/coolbot to save \$20 on your order!



Sunfish Fish Farms

*Dedicated
To Better
Fishing!*

PRIVATE POND STOCKING

Take your residential pond to the next level!

- Health certified fish delivered directly to your pond
- Wide selection of sport fish available

www.SunfishFishFarms.com

801.376.3571 Beaver, UT

DEFINITIONS (AS USED IN THESE REGULATIONS)

Antlerless deer — Any deer without antlers (NAC 502.008).

Antlerless elk — Any elk without antlers (NAC 502.009).

Antelope with horns longer than its ears — Any pronghorn antelope having at least one horn that is longer than either ear of the antelope (NAC 502.002).

Antelope with horns shorter than its ears — Any pronghorn antelope without horns or with both horns that are shorter than its ears (NAC 502.003).

Antlered deer — Any deer having at least one antler that is visible above the hairline of the deer (NAC 502.007).

Antlered elk — Any elk having at least one antler that is visible above the hairline of the elk (NAC 502.0074).

Spike elk — Any antlered elk having not more than two antler points on either antler (NAC 502.1045).

Ewe — Any female bighorn sheep having a horn or horns of at least 5 inches in length each as measured on the outside curve of the horn from the skull to the tip (NAC 502.345).

Junior hunt — A hunt authorized by a regulation of the Commission which is limited to an applicant who (NAC 502.063):

1. Possesses a hunting license or a combined hunting and fishing license;
2. Will attain his or her 12th birthday before the first day of each hunting season to which his or her application relates; and
3. Will not attain his or her 18th birthday until after the last day of each hunting season to which his or her application relates.

Note: A person who is otherwise eligible to apply for a junior hunt may apply for a junior hunt not more than 5 years (NAC 502.333).

Unit — The State of Nevada is portioned off into sections and given corresponding numbers for reference. These sections are known as units or management units. The units help biologists of the Department track and manage wildlife within the state. Units also define where in the state a person can hunt the species designated on their tag. For more information, see the unit map included in this guide book.

Season — The time frame of which a person is allowed to hunt. Seasons can range from as little as two (2) days up to 365 days.

Weapon Class — The term weapon class is used to determine what type of weapon is allowed to be used during a hunt. Weapon classes are broken out into three (3) main categories: any legal weapon, archery, and muzzleloader. See the Legal Weapon Types table for more information.

LEGAL WEAPON TYPES FOR HUNTING BIG GAME

| GAME ANIMAL/ METHOD | BOW | MUZZLELOADING RIFLES | CENTERFIRE FIREARMS | SHOTGUNS* | RIMFIRES | CROSSBOW |
|------------------------|-----|-------------------------|------------------------|-----------|----------|----------|
| Antelope | ✓ | ✓ | ✓ | | | ✓ |
| Bear | ✓ | ✓ | ✓ | | | ✓ |
| Bighorn Sheep | ✓ | ✓ | ✓ | | | ✓ |
| Elk | ✓ | ✓ | ✓ | | | ✓ |
| Mountain Goat | ✓ | ✓ | ✓ | | | ✓ |
| Mountain Lion | ✓ | ✓ | ✓ | ✓ | | ✓ |
| Mule Deer | ✓ | ✓ | ✓ | ✓ | | ✓ |

* Includes muzzleloading shotguns.

LEGAL WEAPONS FOR BIG GAME

CENTERFIRE FIREARM NRS 503.150 AND NAC 503.142

Rifles: Must use a centerfire cartridge of caliber .22 or larger, but not larger than .50 caliber with a case length no longer than 3 inches.

Handguns: Must use a centerfire cartridge of caliber .22 or larger and a barrel length of 4 inches or more.

Prohibited Firearms: Any firearm capable of firing more than one round with one continuous pull of the trigger. Any firearm equipped with a sighting system that uses an electronically controlled or computer controlled firing mechanism.

Prohibited Ammunition: Full metal jacket, full steel, full steel core, tracer or incendiary bullets or shells.

Shotgun (only legal for deer and mountain lion): 10, 12, 16 or 20 gauge. Shotgun barrels may be smooth or rifled for either species.

For Deer: Only rifled slugs or shotgun rounds with sabots that contain a single expanding projectile may be used for deer.

MUZZLELOADING RIFLE AND MUSKET NAC 503.142 AND NAC 503.145 During a "Muzzleloader-Only" Hunt:

Caliber: Firearm must have a single barrel of .45 caliber or larger. **Ignition:** Wheel-lock, matchlock, or flintlock ignition system, or percussion ignition system that uses a primer or percussion cap; (in-lines are permitted.)

Legal Projectiles: Lead ball, lead bullet, semi-jacketed bullet or a metal alloy bullet that expands. A sabot round may be used.

Sights: Only open sights or peep sights are permitted; scopes prohibited. A sight that is operated or powered by a battery, electronics or a radioactive

isotope such as tritium is prohibited. Scopes are permitted only during an "any legal weapon" hunt.

Powder: Only black powder or a black powder substitute may be used.

A muzzleloading tagholder may carry a flintlock or percussion handgun during a muzzleloading-only hunt, however, it may not be used to hunt big game.

Note: Per NAC 503.146, the Department may issue a scope permit to a person with a visual disability which will authorize the use of a 1x magnification scope during a hunt that is restricted to archery or muzzleloading weapons only. Applications must be submitted to the Department on a form provided by the Department.

BOW AND ARROW NAC 503.144

Bow includes any longbow, recurve bow or compound bow. A crossbow is not a bow.

Bow characteristics: A bow used in hunting a big game mammal must have a minimum draw



CONCEALMENT IS OUR EDGE

©2019 Jordan Outdoor Enterprises, Ltd. 1820-22A

#HUNTWITHANEDGE



EFFECTIVELY DOMINATE GEOGRAPHICAL ELEMENTS

EDGE.REALTREE.COM | @REALTREEOUTDOORS



weight of 40 pounds and a maximum let-off of 80 percent.

Arrows: Legal hunting arrows must have a broad-head attached, be 24 inches in length from the end of the nock to the tip of the broadhead and have a 300 grain minimum weight with all components installed.

Broadheads: Fixed broadheads must be at least 7/8 inch wide at the widest point; mechanical heads must be at least 7/8 inch wide at the widest point when in the open position.

It is unlawful: For any person to carry any rifle, musket or handgun equipped with a telescopic sight or with a barrel length of 8 inches or more in the field while hunting under archery regulations (i.e., an archery-only hunt). To carry a bow with an arrow nocked on the bowstring while in or on any motorized vehicle (exceptions in 503.144). To hunt any wildlife with an arrow that has any chemical, explosive or electronic device attached.

CROSSBOW NAC 503.143

Unless a tag holder holds an Archery Disability Permit, it is unlawful to:

- Hunt a big game mammal with a crossbow during either a 'bow-only' or a 'muzzleloader-only' hunt.

- Carry a cocked crossbow containing an arrow or a bolt while in or on any motorized vehicle while the vehicle is on a public highway or other public right-of-way.

Archery Disability Permit: A person with a permanent physical disability can now qualify for a permit that authorizes them to use a crossbow or a bow that uses a mechanical device that can anchor a nocked arrow at full draw or partial full draw during an archery hunt. **NOTE: A scope is NOT permitted.**

As used for this permit, "permanent disability" means a disability which prohibits a person from manually drawing and holding a legal bow at full draw. Contact your local NDOW Office for information.

SIGHT ATTACHED TO FIREARM OR BOW NAC 503.145

A sight attached to a firearm or bow that is used to hunt a game mammal or game bird, or a sight attached to a crossbow that is used to hunt a big game mammal, may be illuminated or powered by:

1. A battery contained within the sight;
2. Light-gathering fiber optics;
3. A radioactive isotope such as tritium; or
4. Iridescent or fluorescent paint.

It is unlawful for a person to hunt a big game mammal, a game mammal or a game bird with a weapon that is equipped with a sight that is capable of casting or projecting a beam of light that is visible to the unaided human eye from the sight to the animal.

HUNTER EDUCATION REQUIREMENTS

Anyone born after January 1, 1960 is required to provide proof of Hunter Education, in order to purchase a Nevada hunting license. Proof of Hunter Education is an official Hunter Education card or certificate from any state or Canadian province, with the Hunter Education number and state or provincial logo or seal or a previous year's hunting license with the Hunter Education number or mark. If you have taken a hunter education class in another state or Canadian province, verification must be provided. (NRS 502.330)

PARTY HUNTS

A party hunt, referred to in regulation as an application by a group of persons, is two or more people applying together to receive the same tag. A party hunt can only be created for Mule Deer, Antlerless Elk or Antelope with Horns

**7L
OUTFITTERS**
**NEVADA'S PREMIER HUNTING
GUIDE SERVICE**

Book Your Hunt Today...

www.7LOutfitters.com
775-962-1998

SHOOTING CAN CAUSE WILDFIRES

- ✓ Choose not to shoot on hot, dry and windy days
- ✓ Exploding targets, incendiary rounds and tracer ammunition are illegal on all public lands
- ✓ Don't shoot into rocks or metal objects and place targets in areas free of vegetation
- ✓ Always have water, a shovel and fire extinguisher ready in case a fire starts
- ✓ Clean up all targets and shells and pack them out

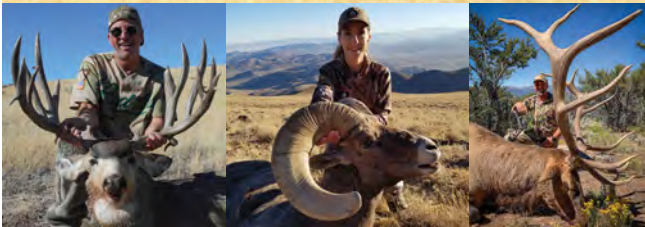
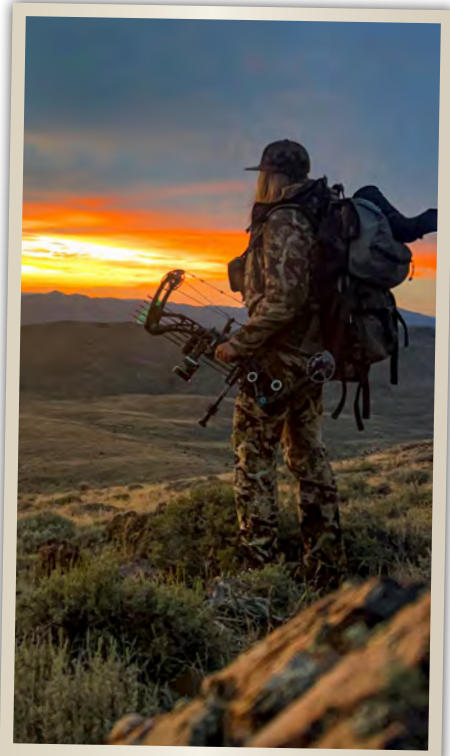
NEVADA
FIRE INFO
www.nevadafireinfo.blogspot.com

Shorter Than Ears. An applicant selects the party option during the application process, designating them as the party leader and generating a party hunt group number that then can be used by all members who wish to join the party hunt. The party hunt group number can be found on the receipt of the party leader. The group number is entered by participating party members during their application process when prompted if they wish to hunt as an individual or as a party for the party hunt species. Entering the party hunt group number on an application will automatically populate the application with the choices made by the leader of the party hunt. The group number can also be entered through a customer's account if an application was submitted before the party was created. Entering a group number on a previously submitted application will update the application to match that of the party hunt leader.

Adult hunters cannot join a junior hunt party, but junior hunters can apply as an adult and receive a party tag with adult members. Junior hunters can apply for a junior hunt party tag with other junior hunters. Nonresident hunters and resident hunters can apply to be in a party hunt together but only for the Mule Deer species. **Note that some options for resident and nonresident do not match and only choices available to both residencies will allow for both residencies to join a party together.**

Party hunt bonus points are factored into party hunt applications by averaging the bonus points across all party members, rounded to the nearest whole number. The most ideal situation for all members of a party is applying with other members who have a similar amount of bonus points. **A party hunt member can return their tag but will not receive a refund of bonus points unless all members of the party also return their tags to the Department.** A party hunt member may receive their bonus points back if the return was due to a medical, death, or military reason.

Specialty tag and male species applications are awarded first. If an applicant applies for an Antlered Mule Deer and a party for an Antlerless Mule Deer, the Antlered Mule Deer applicant could be awarded the Antlered Mule Deer tag and not included in the awarded party hunt for Antlerless Mule Deer. This does not affect the chances of the party to receive a tag. Besides the above exception, party hunts are collectively successful or unsuccessful. Bonus point costs will only be paid for the species of the tag that is drawn. Party hunts are awarded by lowest draw number followed by remaining quota. If a party of four (4) has a low enough draw number to receive a tag but the remaining quota is two (2), the party will be unsuccessful in the draw. Party hunt quotas are respective to resident and non-resident quota pools. (NAC 502.4185)



Mountain Man Outfitters offers world class hunts for:
Mule Deer, Pronghorn Antelope, Elk, Bighorn Sheep,
Mountain Lion, Predators and Upland Game

If you are considering an outfitter, you need to be confident that your choice will be one that is dedicated to your success.

You'll want a team that is experienced in hunting Nevada, and truly has the passion, dedication, perseverance and knowledge it takes to locate and harvest a trophy animal.

We believe our experience is second to none, and we stand ready to guide you to success on your Nevada hunting adventure.

Michael John Jurad Outfitter/Master Guide

HUNT NEVADA
WWW.NEVADAOUTFITTER.COM

1902 Case Street, Winnemucca, NV
Email michael@nevadaoutfitter.com
775-625-1717 • 775-421-HUNT

Nevada High Ridge Outfitters



Lovelock, Nevada

P.O. Box 1323
Lovelock, Nevada 89419
Gary Coleman
1-775-538-7047
Keith Montes
1-775-741-7784
www.nvoutfitters.com

— Mountain Lion — Mule Deer — Elk — Bighorn Sheep — Antelope —



MEMBERS GET QUALITY TAGS & HUNTS



FOR **\$150 PER YEAR** OBTAIN BETTER

**DRAW TAGS
LANDOWNER TAGS
DIY HUNTS
GUIDED HUNTS**



—The Western Big Game Experts™

epicoutdoors.com



**MENTION THIS AD AND GET A DISCOUNT
ON OPTICS & TRAIL CAMS!**

Call us at 435-263-0777 for special pricing



AUTHORIZED DEALER



REFUND OF FEE FOR HUNTING LICENSE – LOSS OF BONUS POINTS

An applicant who fails to obtain a tag may obtain a refund of the fee for his/her hunting license if the license is not a combined hunting and fishing license and he/she:

1. Purchased the license solely to apply for a tag;
2. Does no hunting under the authority of the license; and
3. Submits the license to the Department on or before the last weekday of August of the year in which the license was valid. The Department shall accept the license only if it is received on or before that date. (NAC 502.4225)

Please be aware that an applicant will not be awarded any bonus points if they obtain a refund for their hunting license.

LICENSE REQUIREMENTS

A license is valid for one full year from date of purchase. Any person 12 year of age or older who hunts in Nevada is required to have a valid

hunting or combination hunting and fishing license. Any person under 12 years of age is not eligible to hunt big game in Nevada but may accompany other licensed big game hunters in the field. A person 14 years of age or older may hunt alone if they hold a valid Nevada hunting or combination license and is not using a fully automatic shotgun or rifle. (NRS 202.300)

RETURN OR DEFER A TAG

A successfully draw applicant has 7-days to electronically return their tag to the Department after the draw is conducted. Tags can be returned to the Department for any reason up to the day before the start of the hunt to receive a refund in bonus points. Tags returned to the Department will be issued to an available alternate, available in the second draw, or available for purchase in the First Come, First Served program. Bighorn sheep or mountain goat tags received by the Department before July 15 are eligible for a refund in tag fees. Purchased First Come, First Served tag made after the season has opened will not be eligible for a return or deferral. (NAC 502.4215 and 502.422 Section 4)

If a serious illness or medical circumstance prevents a tag holder from hunting on their tag, that person can choose to defer that tag to the

next year's season. NRS 232.4854 – "Serious illness" means a medical illness, physical injury or condition that substantially affects the quality of life of a person for more than a short period of time. Deferral requests must be received by the Department no later than 14 business days after the opening day of the season for which the tag was issued. Supporting documentation, the physical tag and completed tag return form must be received by the Department before the deferral request can be reviewed. Requests will be reviewed for compliance on an individual basis by the Department's Director's Office. (NAC 502.103, 502.422)

TRANSFER A TAG

Tag holders may choose to transfer their tag to a qualified, non-profit organization who would facilitate the tag being awarded to another individual represented by the organization and who meets specific criteria for participation in the tag transfer program.

Qualifying individuals include youth 12-16 years of age who live in a low-income household or an individual 12 years or older who have a permanent physical disability. All individuals receiving a tag through this program must otherwise be eligible to hunt the tag being offered. Both the original tag holder and the new recipient of the transferred tag will be treated



**With you
wherever
you go.**

**The most up-to-date
hunting regulations online!**



 **eRegulations.com**

as if both were awarded the tag in respect to bonus point cost and applied waiting periods. More information on this program can be found at www.ndow.org or by calling 855-542-6369.

Tag holders who have been diagnosed as terminally by a physician with 12 months or less to live may choose to transfer their tag to another eligible individual to hunt the tag. Both parties will be treated as if they were awarded their tag in respect to bonus point costs and applied waiting periods. (AB 89/CGR 501)

BONUS POINTS

A bonus point is an extra draw number assigned to an application. Bonus points increase draw odds by giving the applicant an extra chance to pull a low enough number to be assigned a tag. Bonus points can be accumulated for all species and class available in the big game draw, except management hunts. Each hunt category has its own set of bonus points. For example, Elk has three different hunt categories, and each are their own set of bonus points: Antlered Elk, Antlerless Elk, and Spike Elk. An active hunting license is required in order to obtain a bonus point and only one bonus point may be obtained per category per valid license year. Applicants should be aware of what day their license expires when considering their bonus point eligibility.

If an applicant is unsuccessful in the draw, the application automatically converts into a bonus point to be used in the following year's draw. Bonus points can also be purchased in place of submitting an application if an applicant does not wish to obtain a tag during the upcoming season. However, a bonus point cannot be purchased by an applicant in a waiting period. Bonus points are spent and revert back to 0 when an applicant is successful in a draw. Bonus points are lost if an applicant misses two consecutive years of applying for the species. (NAC 502.4187-4189 and 502.4225)

GENERAL APPLICATION INFORMATION

Customers can link accounts to one another. To link or unlink a customer to or from your account, visit the "Link Customer Accounts" section in an account. Linked accounts can only be controlled through the primary customer's account. If you wish to be unlinked from another individual, you must contact them and request that they unlink you. Each applicant will need to apply and purchase licenses under their own account and with a separate charge, regardless of linked accounts.

Customers can add additional credit cards to their account by selecting the Payment Methods section. Expired cards cannot be edited but must be deleted and added anew. Some items in a customer's account can be set to auto-renew, the default credit card will be the one that is charged at the time of auto-renewal.

A license is valid for 365 days from the date of purchase. One bonus point per hunt category, per year can be earned under a single valid hunting/combo license. Applicants should be aware of what day their license expires when considering bonus points.

Applicants can choose to purchase a hunting license only if they are successful in the draw. This option will not earn the customer a bonus point.

Once an application is submitted, editing an application can be done in a customer's account page under "Application and Points" up until the close of the application period. Withdrawal and re-submission of an application would be needed if the change to the application causes additional fees. Ex) If an application for a bonus point was submitted and wished to be changed to a tag application, the bonus point application would need to be withdrawn and re-submitted as an application for hunt. Application fees are non-refundable and must be paid for every application submitted.

Unit choices will show the number of tags awarded through the draw process in that unit during the last season. Newly created units will show 0 tags.

If awarded a tag, harvest return cards are mandatory regardless of a successful take during the season and regardless of whether or not the tag was hunted on.

Applicants will be prevented from applying if they did not submit a harvest return card for last season. Customers can complete the return card found in their account, pay \$50 to lift the suspension and proceed with the current year's application.

Applicants are prompted to allow or not allow their draw results made public. This option asks for their name and awarded tag information to be shown in a list of the year's big game draw results.

Applicants are prompted to allow or not allow their information to be shared with 3rd parties. This option asks for their name and personal information to be shared with 3rd party entities who request it from the Department for personal or business use.

Quotas for resident and non-resident are set in Commission Policy 24 at approximately 90% resident - 10% non-resident.

Applicants can choose up to 5 different units and seasons per hunt category so long as there are 5 different choices available. It is highly recommended to utilize all 5 hunt choices for an increased chance of draw success.

Gun World & Archery

Where Hunters are Royalty



Guns & Ammo

Reloading

Archery Sales & Service

Camping

Optics

Cutlery

Class III

2516 Noddle Lane

Elko, NV

775-738-2666

www.gunworldandarchery.com



SHOOTERS & HUNTERS: HELP PREVENT WILDFIRES.

The target shooting and hunting community prides itself on being safe and responsible with firearms in all situations—from using them outdoors to storing them safely at home. Sometimes, however, unusual conditions such as extremely dry environments require an extra level of awareness and safety on the part of shooters.

Wildfires have many possible causes. The National Shooting Sports Foundation, the trade association for the firearms and ammunition industry, reminds all shooters that during dry and hot weather conditions their use of certain ammunition and targets could accidentally ignite a wildfire. NSSF reminds all target shooters and hunters, as well as other outdoor enthusiasts, to consider the potential consequences of their activities in fire-prone environments.

- **Make it a point to know the regulations and rules related to shooting in areas experiencing dry and hot conditions, whether on public or private land or at shooting ranges. Many national forests, for example, do not allow recreational shooting when fire restrictions are in effect.**
- **Consider the type of ammunition and targets you are using. Minimize the risk of fires by not using steel-jacketed ammunition, ammunition with steel-core components, tracer rounds or exploding targets in fire-prone areas.**
- **Remember that equipment, such as cars and ATVs, can have extremely hot exhaust systems that could ignite dry vegetation, so park only in designated areas.**
- **Extinguish and dispose of smoking materials safely.**
- **Follow guidelines to extinguish campfires.**
- **Warn others of potential dangers and behaviors for starting wildfires.**
- **Report any wildfire you see to authorities.**
- **Spread this message to other target shooters, hunters and outdoor enthusiasts.**



NSSF.ORG





NEVADA OUTFITTERS & GUIDES ASSOCIATION

Thank You To Our Sponsors

Vortex Optics • Nevada Bighorns Unlimited
Canyons West Guide Service • Gun World & Archery
Western Wildlife Adventures • Alan Wilson • Henry Krenka
Lowell Prunty • Bruce Hudson • Doyle Moss • Dee Duval

Learn more about the hunt: www.nevadaoutfitters.org

12th Annual Wounded Hero Hunt

The Nevada Outfitters and Guides Association (NOGA) provided a U.S. military person with a free elk tag and guided week-long Nevada hunting trip during the 2022 fall hunting season.

Henry Krenka – President
Ron Lara – Treasurer

Michael Jurad – Vice-President
Rachel Buzzetti – Staff-Secretary • nvnoga08@yahoo.com



Scott Carpenter was in USMC 0311 1st Battalion 7th Marines and 2nd Battalion 7th. 2005-2009 two tours in Iraq and one tour in Afghanistan.

R&J OUTFITTERS

Affordable trophy whitetail hunts in N.W. Missouri



176 B&C

5-Day, Fully Guided, Fair Chase Hunts with Lodging start at only \$1,800.00!

Thousands of private acres.
No trophy fees or hidden charges.

YES YOU CAN!

**CALL TODAY:
(305) 606-1611**

www.randjoutfitters.com

IF I DRAW A TAG IN THE MAIN DRAW, WHEN WILL I RECEIVE MY TAG?

Tags for successful applicants will be printed beginning one week after the conclusion of the draw and the one-week electronic return period. Printing all main draw big game tags usually takes 1-2 weeks. Applicants can expect their tags to be placed in the mail within 3 weeks of the conclusion of the draw and receive their main draw tags around July 1. **Applicants are advised to ensure the address provided for tag shipping at the time of application submission is accurate and current.**

MANDATORY BIG GAME HARVEST INSPECTIONS

Some species require the inspection of the skull, horns, or hide by a representative of the Department within a given time after the harvest. Time frames of inspection by a Department representative are as follows:

- Black Bear – within 72 hours of harvest – NAC 502.373
- Bighorn Sheep, regardless of subspecies or sex – within 5 days of harvest – NAC 502.345
- Mountain Goat – within 5 days of harvest – NAC 502.364
- Mountain Lion – within 72 hours of harvest – NAC 502.370

Call 775-688-1500 to schedule a harvest inspection in your area.

HOW DOES THE MAIN DRAW WORK IN NEVADA?

Bonus points are squared to equal the number of assigned numbers you have in the draw, plus one extra number for your original application. $(BP^2) + 1 = \# \text{ of chances to draw}$.

Draw numbers are assigned to each application and chance received from a bonus point. Numbers are assigned randomly from 1-100 million. The lowest number assigned per hunt species is analyzed and used for potential draw success.

Quotas are totaled by adding up every opportunity for a species to be assigned as a tag. This is the maximum number of times a species can be awarded as a tag to an applicant. All antlered, antlerless, depredation, spike hunts + all tags available in every unit + all season options + all weapon type options = total quota for elk.

Tags are awarded to applications beginning with the lowest draw number. Certain applications are evaluated and awarded before others. The order of awarded applications are as follows:

Silver State, Partners in Wildlife, Junior Mule Deer Antlered/Antlerless

Assigned simultaneously in no particular order [Rocky Mountain Bighorn Sheep Ram, California Bighorn Sheep Ram, Nelson (Desert) Bighorn Sheep Ram, Elk Antlered, Antelope Horns Longer than Ears, Mule Deer Antlered, Mountain Goat, Bear] Elk Depredation Antlered

Assigned simultaneously in no particular order [California Bighorn Sheep Ewe, Nelson (Desert) bighorn Sheep Ewe, Elk Antlerless, Antelope Horns Shorter than Ears, Mule Deer Antlerless] Elk Depredation Antlerless

Spike Elk, Management One Horned Nelson Ram

Once an applicant is awarded a tag for a species, all other chances to be awarded a tag for the same species are made ineligible. An applicant can only receive one tag per species. Ex) if an applicant draws an antlered elk tag, all applications for antlerless or spike elk become ineligible.

DEER SPECIAL REGULATIONS (NAC 503.170)

In the fenced or cultivated lands of the Smith and Mason Valleys, in the Mason Valley Wildlife Management Area and in the zones within the Fort Churchill State Historic Park and the Lahontan State Recreation Area that are designated for hunting by the Administrator of the Division of State Parks of the State Department of Conservation and Natural Resources:

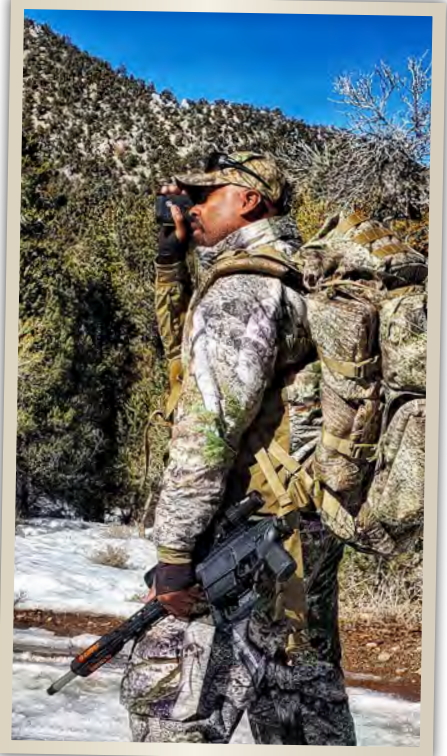
Deer may be hunted only with a shotgun no larger than 10 gauge and no smaller than 20 gauge, using rifled slugs or shotgun rounds with sabots that contain rifled slugs or a single expanding projectile; or a longbow and arrow.

The use or possession of shotgun rounds with sabots that contain other than rifled slugs or a single expanding projectile is prohibited.

A shotgun that is used to hunt deer may be equipped with a smoothbore barrel or a barrel that is partially or fully rifled.

In the Mason Valley Wildlife Management Area deer may be hunted only on the following days during the season set for the hunting of deer:

- Saturdays, Sundays and Wednesdays;
- Nevada Day, as observed;
- November 11, Veteran's Day;
- Thanksgiving Day; and
- Family Day.



IMPOSITION OF LIABILITY (NRS 41.472)

1. If a parent, guardian or other person legally responsible for a minor under the age of 18 years:
 - (a) Knows that the minor has previously been adjudicated delinquent or has been convicted of a criminal offense;
 - (b) Knows that the minor has a propensity to commit violent acts; or
 - (c) Knows or has reason to know that the minor intends to use the firearm for unlawful purposes, and permits the minor to use or possess a firearm, any negligence or willful misconduct of the minor in connection with such use or possession is imputed to the person who permits such use or possession for all purposes of civil damages, and, notwithstanding the provisions of subsection 2 of NRS 41.470**, that person is jointly and severally liable with the minor for any and all damages caused by such negligence or willful misconduct.

NRS 41.470** Subsection 2 states the joint and several liability of one or both parents or guardian having custody or control of a minor under this section shall not exceed \$10,000 for any such act of willful misconduct.

COMMONLY ASKED CALL CENTER QUESTIONS

WHERE WOULD I FIND HUNT STATISTICS?

Nevada has a great hunt statistic and planning tool named HuntNV. It is a great way to see draw, bonus point and harvest statistics in each unit for all of Nevada's big game species and includes an interactive map. Find it at hunt.wildlifenv.com or through www.ndow.org.

WHERE CAN I BUY MAPS OF NEVADA?

Great resources to find maps of Nevada include the US Forest Service, Bureau of Land Management, Nevada Department of Transportation, and the Nevada Gazetteer.

HOW TO RESET MY ACCOUNT PASSWORD? HOW TO RESET MY PASSWORD WITHOUT AN EMAIL?

Customers can reset their passwords by selecting the "Log in" button and "Forgot password" link. An email will be sent with a link to reset the password, or you can choose to "reset my password without an email" and answer the customer identifier questions associated with your account.

WHERE CAN I FIND BONUS POINT DATA?

NDOW biologists create bonus point tables that include a breakdown of successful and total applicants by bonus point level and choice. To find this data, visit our website at www.ndow.org and search "bonus point data" in the search bar.

IF I MOVE OUT OF STATE, DO MY BONUS POINTS CHANGE?

Bonus points are residency agnostic, meaning that if your residency changes, your bonus points go with you. **Note that some hunts are only offered to a resident.** If a person cannot apply for a hunt due to closures or residency change, previously acquired points will remain static until the applicant is able to again apply for the hunt connected to the bonus points.



WHY DO I NEED TO PROVIDE MY SSN TO CREATE AN ACCOUNT?

Laws regarding child support mandate that any person who is required by federal law to have a social security number must provide the number to obtain a business, occupational or recreational license. Federal Law – Public Law 104-193; NRS 502.063, 503.5833, 504.390.

HOW DO I COMPLETE MY RETURN CARD HARVEST SURVEY?

Return cards are done fully electronically and can be found in your customer account. Log into your account and select the “Return Cards/ Surveys” section on the left-hand side. Select what year and survey to take. Once completed, the survey will show as reported. You can also view answers to past surveys that have been previously submitted.

HOW DO I LINK MY ACCOUNT TO ANOTHER?

Customers can link accounts to one another by visiting the “Link Customer Accounts” section in an account. The customer account that links other accounts to it is called the primary account. Linked accounts can only be controlled through the primary customer’s account. If you wish to be unlinked from another individual, you must contact the primary account holder and request that they unlink you.

WHY DID I NOT RECEIVE A BONUS POINT?

An active hunting or combination license is required in order to obtain a bonus point. Only one bonus point per species and class can be obtained in the year the license is active. Customers will be prompted to purchase a license when submitting their application or to purchase only if successful. Choosing to purchase only if successful will not earn a customer a bonus point.

I TURNED IN MY TAG, WHY DID I NOT RECEIVE MY BONUS POINTS BACK?

If a tag is returned to the Department by a member of a party hunting application, party hunt members will not receive their BPs back unless all members of the party return their tag before the season opens. A party hunt member may receive their bonus points back if the return was due to a medical, death, or military reason.





Nevada's 5-Star Outdoor Shooting Facility

The Largest Public Recreational Shooting Facility in the United States

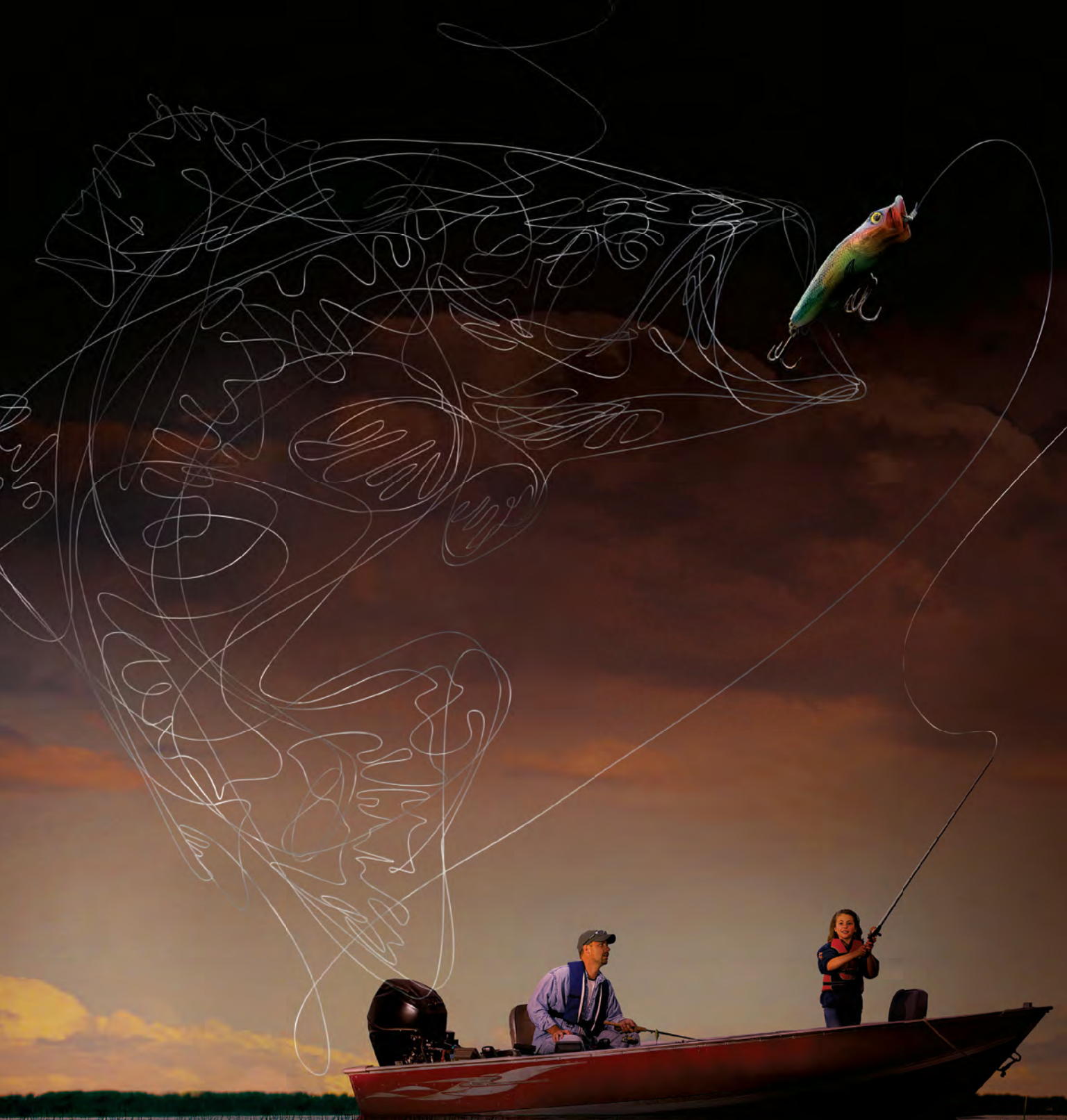


Trap • Skeet • Sporting Clays • Archery • Rifle-Pistol • Education Center



11357 N. Decatur Blvd., Las Vegas, NV
(702) 455-2000

www.ClarkCountyNV.gov/ShootingComplex
shootingcomplexinfo@ClarkCountyNV.gov



THE SIMPLE ACT OF FISHING, PRESERVES FISHING.

Every time you purchase a fishing license or register your boat, a portion of the proceeds go toward preserving our nation's coastlines, lakes, rivers and streams. Protecting our memories on the water for generations to come.

Learn more at TakeMeFishing.org/Conservation



TAKEMEFISHING.org





WILDLIFE REVOLUTIONS

253 Freeport Blvd. Sparks, NV 89431
775.527.1614 | wildliferevolutions.com



Scan Me

