



New Hampshire Fish and Game Department



NEW HAMPSHIRE

HUNTING DIGEST

& TRAPPING

September 2025–August 2026

**Official NH
Regulations**

Deer, Bear, Turkey,
Small Game,
Migratory Birds,
and Furbearers



Hunt NH

**Plan Your NH Hunting
Adventure Today!**

huntnh.com

TRACK GAME

GAME ON

Protection during work and play

Get coverage that goes beyond your homeowners' policy with comprehensive ATV insurance to protect your off-road vehicle, belongings, accessories and more – no matter where you ride.

1-800-PROGRESSIVE / PROGRESSIVE.COM

PROGRESSIVE

Quote ATV
insurance in
as little as
3 minutes



Progressive Casualty Insurance Co. & affiliates. Prices vary based on how you buy. Custom accessories coverage included with the purchase of comprehensive and collision coverage. Protection for personal belongings offered with optional Carried Contents coverage. Coverage subject to policy terms and conditions.

HUNTING DIGEST

& TRAPPING

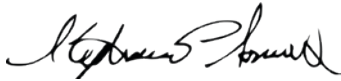
160 Years of Conservation

There is nothing like the peace and solitude found in the woods or a field on a crisp fall morning scoping out your hunting ground. There is much for hunters to experience in the Granite State from geese to deer to moose and turkey. For the past 160 years, the NH Fish and Game Department has worked hard year round to conserve the wildlife species and their habitat in the state for all residents and visitors to enjoy. Bear and deer harvests in 2024 were strong, with the bear harvest breaking a record. Check out the Wildlife Harvest Summary to learn more by visiting www.wildlife.nh.gov/hunting-nh/hunting-reports-harvest-summaries

There are a number of new law changes in effect beginning this year: deer can now be taken with a crossbow during the archery season in several WMUs if you have an archery license (p. 18); an amended law now allows air rifles to be used for hunting larger game species and NH Fish and Game has established criteria for their use for moose, deer, and bear (p. 12); a youth pheasant season will now be offered (p. 14); any furbearer species taken shall be registered online (p. 32); starting in 2025, the fall shotgun season for turkey in WMUs G and I2 will be closed and starting in the spring of 2026, WMU I1 will be removed from the list of units where a second bird may be taken during the spring season (p. 26); and beginning this fall, hunters will be required to register their first bear prior to taking an additional bear (p. 18).

Help us continue to keep chronic wasting disease from entering the state by not using natural urine-based deer lures. These have the potential to spread the infection. The lures do not undergo any quality control or treatment that might inactivate or kill disease-causing agents, and the infective protein can persist in the environment for years.

Thanks for hunting in New Hampshire and please be safe. Always be sure of your target and what lies beyond, clean up after yourself, and display good sportsmanship. Kindly remember, when hunting on private land you are a guest of the landowner, so treat their property with respect and express your appreciation to the owner, and your presence will always be welcome. See you outdoors!



Stephanie L. Simek, Ph.D.
Executive Director
N.H. Fish and Game Department



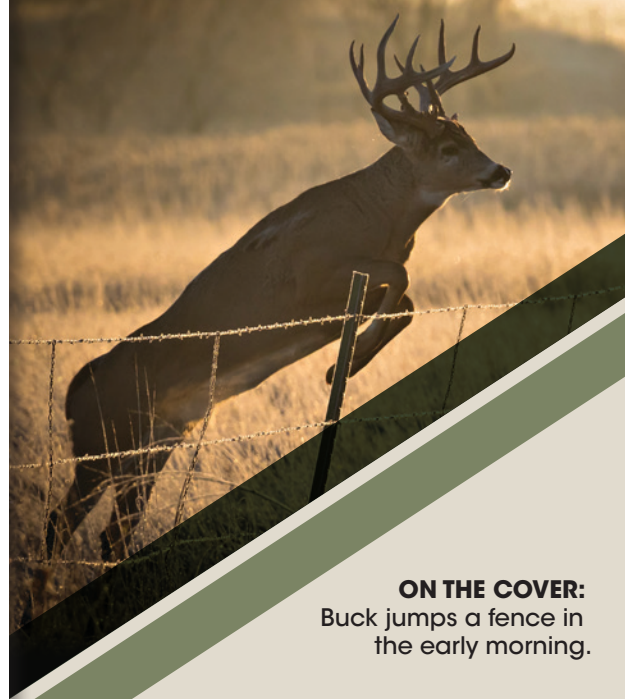
About This Publication

This publication is a summary of hunting and trapping regulations. It is not the full laws or rules. It is intended only as a general guide. Please check for updates in the online version at www.huntnh.com/hunting/publications.html.

For more information concerning regulations, consult the N.H. Fish and Game Law Book, Fish and Game Administrative Rules, or contact your local Conservation Officer. Fish and Game laws and rules may be viewed at any Fish and Game office; Legislative Services, Administrative Rules, in the State House Annex, 25 Capitol St., Room 219, Concord, NH 03301; and at huntnh.com or nh.gov. A compendium of Fish and Game laws may also be purchased at Department headquarters in Concord.

This publication is partially paid for through the sale of advertising. The New Hampshire Fish and Game Department neither endorses products or services listed or claims made nor accepts any liability arising from the use of products or services listed.

© 2025 N.H. Fish and Game Department



ON THE COVER:
Buck jumps a fence in
the early morning.

CONTENTS

- 2 Contact Information
- 5 Hunter Education
- 7 License Information
- 8 License Fees
- 10 General Hunting Regulations
- 13 Where Can I Hunt in N.H.?
- 14 Youth Hunting
- 15 Hunting Safety
- 16 Wildlife Management Units
- 18 Deer Hunting
- 21 Special Deer/Bear Tag
- 24 Small Game Hunting
- 25 Hunt with an Apprentice
- 26 Turkey Hunting
- 28 Registration Stations (Deer/Turkey)
- 29 Bear Hunting
- 30 Waterfowl/Migratory Bird Hunting
- 32 Furbearer Hunting
- 33 Furbearer Trapping
- 35 Lynx Protection Zone & Trap Restrictions
- 36 Nongame Wildlife
- 39 Sunrise and Sunset
- 40 Moose Hunting

HUNTING DIGEST

& TRAPPING



State of New Hampshire

Kelly A. Ayotte, Governor

New Hampshire Fish and Game Department
11 Hazen Drive • Concord, New Hampshire 03301

Important Telephone Numbers

Law Enforcement

Dispatch (603) 271-3361
Hunting Laws..... (603) 271-3127

To Report Violations 24 Hours A Day

Operation Game Thief 1-800-344-4262
or huntnh.com/ogt

Off Highway Recreational Vehicle

(laws/education)..... (603) 271-3129

N.H. Fish and Game

Headquarters (603) 271-3421

Executive Director's Office (603) 271-3511

Regional Offices

Region 1: Lancaster (603) 788-3164

Region 2: New Hampton (603) 744-5470

Region 3: Durham (603) 868-1095

Region 4: Keene..... (603) 352-9669

N.H. Fish and Game — Our Mission

As the guardian of the state's fish, wildlife, and marine resources, the New Hampshire Fish and Game Department works in partnership with the public to:

- Conserve, manage, and protect these resources and their habitats;
- Inform and educate the public about these resources; and
- Provide the public with opportunities to use and appreciate these resources.

The NH Fish and Game Department receives Federal financial assistance from the U.S. Fish and Wildlife Service. Under Title VI of the 1964 Civil Rights Act, Section 504 of the Rehabilitation Act of 1973, Title II of the Americans with Disabilities Act of 1990, the Age Discrimination Act of 1975, and Title IX of the Education Amendments of 1972, the U.S. Department of the Interior prohibits discrimination on the bases of race, color, national origin, age, sex, or disability. If you believe that you have been discriminated against in any program, activity, or facility, or if you need more information, please write to: Office of Diversity, Inclusion, and Civil Rights, U.S. Department of the Interior, 1849 C Street, NW, Washington, D.C. 20240.

This digest, with enlarged type, is available for the visually impaired.

Call N.H. Fish and Game, Public Affairs Division at (603) 271-3211.

Law Enforcement Districts

District 1

Region 1, 629B Main St.
Lancaster, NH 03584
(603) 788-3164
Lt. Mark W. Ober

District 2

Region 2, Box 417
New Hampton, NH 03256
(603) 744-5470
Lt. Bradley R. Morse

District 3

Region 2, Box 417
New Hampton, NH 03256
(603) 744-5470
Lt. James E. Kneeland

District 4

Region 4,
15 Ash Brook Court
Keene, NH 03431
(603) 352-9669
Lt. William Boudreau

District 5

Fish and Game HQ
11 Hazen Drive
Concord, NH 03301
(603) 271-3361
Lt. Adam P. Cheney

District 6

Region 3, 225 Main St.
Durham, NH
03824-4732
(603) 868-1095
Lt. Delayne Brown



Fish and Game Commissioners

The numbers on this page are the home phone numbers of Fish and Game Commissioners. Please use discretion with the timing of your calls. For emergency calls after hours, call N.H. State Police or your local police. Questions about N.H. hunting laws go to (603) 271-3127.

Belknap County

Patrick McGonagle
(603) 455-8093

Carroll County

Gene Chandler
(603) 496-9858

Cheshire County

John Caveney
(802) 254-1535

Coastal

Jim Titone
(603) 394-5794

Coos County

Eric G. Stohl
(603) 237-4206

Grafton County

David Poole
(603) 254-7719

Hillsborough County

Ray Green
Chair
(603) 673-2024

Merrimack County

Christopher Hodgdon
(603) 746-1000

Rockingham County

David Trahan
(603) 494-3802

Strafford County

Albert DeRosa
(978) 314-5193

Sullivan County

Bruce Temple
(603) 543-0519



About This Guide

This high-quality guide is brought to you by the New Hampshire Fish and Game Department through a partnership with Kalkomey, a trusted leader in outdoor safety education since 1995. In addition to producing this guide, Kalkomey also offers a suite of educational courses to help people enjoy the outdoors safely.

The revenue generated through ad sales in this publication significantly lowers production costs and generates savings. These savings translate into additional funds for other important agency programs and we thank the advertisers for their support.



**Have questions or feedback?
Interested in advertising?**

Please contact us at 413.884.1001

Related education & courses include:

hunter-ed.com™

bowhunter-ed.com™

ilearntohunt

Visit Kalkomey.com to explore the complete suite of educational courses.

The hunting and trapping regulations in this guide are online at:
 eRegulations.com



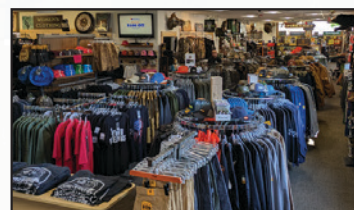
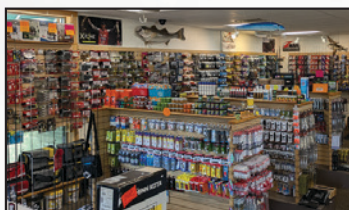


NH Hunting & Fishing Licenses

QUALITY HUNTING & FISHING PRODUCTS FOR OUTDOORSMEN AND WOMEN

Climate Controlled Indoor Archery Range

 **BROWNING** **SHIMANO** *Kimber*



HOYT
ARCHERY

Mathews

 **TENPOINT**
CROSSBOW TECHNOLOGIES

603-332-3270
www.coyote-creek-outfitters.com



603-335-2222
www.coyote-creek-archery.com

22 | 26 Farmington Road, Rochester, New Hampshire
(Exit 15 off the Spaulding Turnpike | Route 11)

NEW HAMPSHIRE WELCOMES HUNTERS!

Hunt New Hampshire's big woods, where you can still walk for miles without seeing a house, a road, or another hunter — unless you want to. Hunt with your friends and family, the way hunting used to be.

We've got big bucks, gobblers galore, Sunday hunting, and special youth hunts. Add to that millions of acres of prime wildlife habitat and you've got the setting for an unforgettable hunting experience!

It's easy to get your New Hampshire hunting license. You can buy it online at huntnh.com. To purchase a license online, you'll need the license number from a previous N.H. hunting license or your New Hampshire Hunter Education card. You can get your turkey, bear, and pheasant permits online as well. Or visit one of our friendly N.H. license agents throughout the state.

Get started on your scouting by checking out the *N.H. Wildlife Harvest Summary*; it lists results for last year's hunting seasons by WMU and town, including harvest statistics and hunting/trophy records. This, plus topo maps, Wildlife Management Area maps and info, and lots of basic information on hunting in New Hampshire, is at your fingertips at the Fish and Game website, huntnh.com.



When planning your trip, check out visithnh.gov for ideas and deals on lodging, camping, and good eats. To help you get the most out of your time afield, maybe this is the year to hire a licensed N.H. hunting guide (listed at huntnh.com).

Apprentice Hunting Opportunity

If you know someone who wants to experience hunting, take advantage of New Hampshire's Apprentice Hunting License! This license

provides a one-time, one calendar-year exemption from Hunter Education requirements for a hunter accompanied by a properly licensed adult 18 years of age or older. Learn more at huntnh.com/apprentice.

Since you're reading this, chances are you're already getting your gear ready and counting the days until your first New Hampshire hunt of the season. If not...what are you waiting for? Plan your New Hampshire hunting adventure today!

NEW for 2025-26

- Deer may be taken with a crossbow during the archery season in a number of WMUs by anyone holding an archery license. See page 20 for additional details.
- A recently amended state law (2025) now allows the use of air rifles for hunting larger game species in New Hampshire. The Department has established additional criteria for the use of air rifles for hunting moose, deer, and bear. See page 10 for more information.
- Beginning in 2025, a youth pheasant hunting season will be held on September 27 and 28.
- Starting in 2025, any furbearer species taken by hunting shall be registered via online reporting. See page 32 for more information and a link for reporting.
- Starting in fall 2025, the fall shotgun season for turkey in WMUs G and I2 will be closed. Starting in spring 2026, WMU I1 will be removed from the list of units where a second bird may be taken during the spring season. See page 26 for a list of turkey seasons by WMU.
- Starting in fall 2025, hunters will be required to register their first bear prior to taking an additional bear.

**Don't spend all your time
huntin' around for information...**

**Just visit our mobile-friendly
website: huntnh.com**



Don't just pass the buck



1-800-344-4262
wildnh.com/ogt

HUNTER EDUCATION IN NEW HAMPSHIRE

Successful completion of a Hunter Education course is required for New Hampshire hunters age 16 and older who haven't previously held a hunting license. In a Hunter Education course, you'll learn about firearms and archery safety and handling, outdoor safety and survival skills, N.H. hunting laws, your responsibilities as a hunter and more. Hunter Education has cultivated generations of safe, responsible, and ethical hunters, resulting in the dramatic reduction of hunting-related incidents in New Hampshire.

Today, it's easier than ever to find, register for, and participate in a Hunter Education course that's convenient for you. Review course offerings and register online anytime at huntnh.com. Another option is the online Hunter Education course, which completes your training with a field day and practical field exam (you must be 12 years or older to take the online course for certification). To view course schedules, locations, and to register online for Hunter Education or Trapper Education, visit huntnh.com/hunter-ed.

Hunter Education courses cover both firearms and archery. Successful completion of either the classroom-based course or the online course with a field day allows you to purchase both a firearms and archery hunting license. If you took the course prior

to January 1, 2014, you need to show proof of completion of both Hunter and Bowhunter Education courses to be able to purchase both licenses.

Help Teach Hunter Ed!

Hunter Education in New Hampshire is taught primarily by volunteer instructors and they need your help. The process for becoming an instructor is easy; the yearly commitment is minimal, as low as a few hours a year, but the results are gratifying. With your help, the number of hunting incidents will continue their decline, lands will continue to remain open for multiple uses including hunting, hunters will continue to enjoy the feasts of their bounty, and hunters and wildlife enthusiasts will continue to enjoy the woods, water and wildlife of New Hampshire. Today's hunters are going into the field knowing how to hunt safely, responsibly, and ethically. Training is provided through an instructor certification course that encourages effective educational techniques in a team-teaching environment. Visit huntnh.com/hunter-ed for more information and training opportunities, or call (603) 271-3212.



Learn more about
Hunter Education
and sign up for classes at
our mobile-friendly website:
huntnh.com



**US Army Corps
of Engineers®**

Visit us at these Lakes and Dams in New Hampshire:

- Franklin Falls • Blackwater • Otter Brook
- Surry Mountain • Hopkinton-Everett
- Edward MacDowell



HUNTER EDUCATION IN NEW HAMPSHIRE



The New Hampshire Off Highway Vehicle Association represents affiliated wheeled OHRV clubs and their members who ride ATVs, UTVs, Trail Bikes and more. Our goal is to insure the future of riding in NH through positive legislation, trail maintenance and rider education.

Join any NHOHVA club today and receive \$30 off each wheeled NH state OHRV registration. Becoming a member supports clubs and provides them the funds needed to maintain trails for everyone to enjoy. You can find information on all NHOHVA affiliated clubs at NHOHVA.org. When you purchase your membership at our website you can immediately retrieve your club member voucher to show when registering your OHRV and obtain the discounted price.

Support NH OHRV Trails by Joining a Club
Today at NHOHVA.org

The New Hampshire Off Highway Vehicle Association

PO Box 96 Cornish Flat, NH 03746
(413) 200-8061 nhohva@gmail.com
www.nhohva.org

Youth Programs

Summer youth programs for Hunter Education and shooting sports:

- **Barry Conservation Camp:** One-week overnight camp sessions.
- **Owl Brook:** Free summer youth programs.

Visit wildnh.com for program descriptions and schedules. Help get our young people outdoors!

Wildlife Legacy Initiative

If you love New Hampshire's fish, wildlife and wild places, give a little extra this year when you buy your fishing or hunting license or make a donation. Support the **Wildlife Legacy Initiative** and help the New Hampshire Fish and Game Department's **Landowner Relations Program**, working to keep New Hampshire open to all outdoor users by protecting access to private land. Donate when you buy your license — in person or online at wildnh.com. Just check off the \$10 Wildlife Legacy Donation...and thank you! Learn more at wildnh.com/landshare.

Hunter Education Requirements

Anyone applying to hunt with a firearm or bow must present a previous hunting or archery license or a Certificate of Completion from an approved Hunter or Bowhunter Education course from any year, any state. Online only courses are not accepted in NH. For duplicates of lost certificates, call 603-271-3212.



Owl Brook Hunter Education Center

New Hampshire Fish and Game's Owl Brook Hunter Education Center in Holderness, NH, offers a diversity of hands-on educational experiences, including shooting sports, map and compass instruction, Hunter Education and Trapper Education certification courses, outdoor skills, and other youth activities.

Interpretive trails and an old-time trapper cabin are open to the public when the center is open. A 14-target woodland archery course and 4-target practice archery range are open seven days a week, from dawn to dusk, May to November. The classroom, small-bore shooting range, and shotgun range are available to individual groups for customized courses instructed by our staff.

For more information, call 603-536-1290 or visit huntnh.com/owl-brook.

The center was made possible through Federal Aid in Wildlife Restoration funds and private donations.



Visit TickFreeNH.org for information on how to prevent tick encounters and more!

TICK IDENTIFICATION



BLACKLEGGED TICKS Carry Lyme Disease

Adult Female
1/8"

Adult Male
1/8"

Nymph
1/32"-1/16"

Larva



www.facebook.com/TickFreeNewHampshire/

www.instagram.com/tickfreeeh



Who Needs a License?

Hunting licenses are required for persons 16 years of age and older. Some licenses and permits are required for all ages; see page 8.

Buying a License

Hunting licenses, valid Jan. 1 to Dec. 31 of each year, may be purchased online via huntnh.com, from license agents, Fish and Game Department Headquarters in Concord, and Fish and Game Region 1, 2, and 4 offices. Trapping and fur buyer licenses, valid July 1 to June 30 of the next year, are only available at Fish and Game's Concord headquarters or through the mail. Applicants must purchase their own licenses.

To purchase a hunting or archery license on the internet site or at a Walmart, you must have held a hunting or archery license or taken Hunter Education or Bowhunter Education in N.H. in the year 2000 or later. There may be a delay of as much as one week after taking the N.H. Hunter Education course before the information is in our database.

Hunter Education Requirements

See page 6.

Regular NH Hunting License

Wherever the term "Regular NH Hunting License" is used in this Hunting Digest, it is understood to include the Combination NH Hunting and Fishing License. Hunting license comes with 1 deer tag. Small Game is included.

Residency Requirements

To obtain a license at resident rates, the person must present to the issuing agent a valid New Hampshire driver's license or non-driver's picture identification card issued by the N.H. Department of Safety, Div. of Motor Vehicles. Whenever the applicant is under 18 years of age, the parent or guardian of the applicant shall be a resident and present their valid N.H. driver's license or non-driver's picture identification.

Youth Hunters

See page 14.

Resident Senior Licenses

See page 8.

Lost Licenses

Lost licenses may be reprinted at the original issuing agent or Fish and Game's Concord headquarters. If purchased at a license agent, and it is at least one week from the date of issue, the license can be reprinted from the online sales site. There is no charge for reprints, however, there is a limit on the number of reprints allowed.

Military Licenses

N.H. residents who are regular active duty in the U.S. Army, Navy, Marines, Air Force, or

Coast Guard permanently stationed outside the state may be eligible for free temporary hunting and fishing licenses. Available at NH Fish and Game Headquarters in Concord; Region 1 and 4 offices; or by mail or fax (603) 271-5829. Download an Active Duty Military License application from the Fish and Game website and send with duty orders. Call (603) 271-3422 for information. Non-resident military personnel on regular active duty, and permanently stationed in New Hampshire, may purchase regular hunting and fishing licenses at N.H. resident rates (cannot be purchased online or at Walmart).

Archery

An archery license allows you to:

1. Take deer with a bow and arrow during the archery season.
2. Take other species with a bow and arrow, provided you have the appropriate license or permit.

It is legal to hunt deer with bow and arrow while using the firearms deer tag during the firearms deer season under a Regular Hunting License and in compliance with Wildlife Management Unit restrictions. During the muzzleloader season, the **firearms deer tag** may be filled using a muzzleloader, crossbow, or bow and arrow.

Archers may fill their **archery deer tag** any time during the archery season.

The Special Archery Deer Permit allows the taking of an antlered-only deer with bow and arrow during the archery deer season. This additional permit must be purchased at the same time you purchase your archery license.

See page 18 for a complete listing of deer season regulations.

Carrying Handguns While Bowhunting

You may carry a handgun while bowhunting, but it is not legal to use a handgun to assist in the taking of an archery-tagged deer.

Crossbows

Crossbow definition (see page 20). It is legal to use a crossbow to take the species listed below under any of the following circumstances:

1. **Deer**
 - » During the Archery season with an archery license and you are 68 years of age or older in all WMUs.
 - » During the Archery season in WMUs **D2W, G1, G2, H1, H2, I1, I2, J1, J2, K, L, and M** with an archery license (or are less than 16 years of age accompanied by a licensed archer).
 - » During the Muzzleloader season with a muzzleloader license.
 - » During the Firearm season with a firearm license (any deer taken shall be tagged with a valid firearms deer tag).
 - » If you are a youth participating in the Youth Deer Weekend.

2. Turkey

Crossbows are a legal method of take for turkeys.

3. Bear

Crossbows are a legal method of take for bear season.

4. Moose and Small Game

Crossbows are a legal method of take for moose and small game season.

Disabled Hunters

A Disabled Crossbow Permit (permanent, \$10) allows the use of crossbows during any season where use of a bow and arrow is allowed. This permit must be applied for at Concord Headquarters. You will be required to purchase the appropriate hunting license each year. This permit does not include separate tags. Hunters holding a disabled crossbow permit are limited to using only a crossbow. They are not allowed to use a longbow, recurve, or compound bow.

For information on Disabled Veterans License, Paraplegic License, and Hunt from a Motor Vehicle Permit visit huntnh.com.

Prohibited Acts

Any person whose privilege to fish, hunt, trap, guide, take or land lobsters and crabs, or engage in commercial marine fishing activities is currently suspended or revoked in any other state or province is prohibited from purchasing or possessing a license for such activity in New Hampshire (RSA 214:18-b).

It is unlawful to possess more than one of any type of regular hunting license or permit, use another person's license or permit, allow another person to use your license or permit, or not show your license upon demand.

Exceptions —

When a License Is Not Required

- Resident landowners and their minor children under the age of 16 may hunt and trap on their own land, in season, without a regular hunting or trapping license. This exception does not apply if their right to obtain a license is under suspension. Furthermore, it does not apply to activities requiring a special license or permit (i.e., archery, muzzleloader, pheasant, turkey, etc.) Note, no animal may be pursued off of the owner's property without possessing a regular hunting license. Resident Landowner special licenses must be purchased from Fish and Game headquarters, either in person or by mail.
- Children under 16 years of age do not need a regular N.H. hunting or archery license. Youth must be accompanied by a properly licensed person 18 years of age or older. Minors must have a permit or license for turkey, Special Unit L or M deer, special archery deer, bear, nonresident muzzleloader, and trapping.

Persons exempted from purchasing an annual license may use the tag on page 21 of this publication or may download one from huntnh.com.

LICENSE INFORMATION

NEW HAMPSHIRE RESIDENT	TYPE OF LICENSE	COMMENTS	FEE	AGE	PROOF OF NH RESIDENCY REQUIRED	APPROPRIATE TAG MUST BE ATTACHED	ISSUED FROM CONCORD OFFICE ONLY
	Regular Combination Hunting and Fishing License***	Previous Hunting license or Hunter Education card required.	\$56.00	16–67	•	•	
	Regular Hunting License	Previous Hunting license or Hunter Education card required.	\$32.00	16–67	•	•	
	Senior Combination Hunting and Fishing License***	Available to those born in 1948 or later, and at least 68 years of age at the time of purchase. Must be purchased annually. Proof of hunter education course or previous hunting license required.	\$7.00	68+	•	•	
	Regular Lifetime Hunting and Fishing, Archery, Muzzleloader*	Call (603) 271-3422 for details. Requirements for specific licenses are the same as listed for equivalent individual licenses.			•		•
	Newborn Lifetime Combination Hunting and Freshwater Fishing Gift Certificate*	Parent/legal guardian must be N.H. resident. Child's birth certificate required. Available from birth to day before first birthday. Purchase at Fish and Game headquarters or by mail (see wildnh.com/forms)	\$304.50	Under one year	•		•
	Archery License	Previous Archery license or Bowhunter or combined Hunter/Bow Education card required.	\$32.00	16–67	•	•	
	Senior Archery License	Available to those born in 1948 or later, and at least 68 years of age at the time of purchase. Must be purchased annually. Proof of bow hunter education course or previous archery license required.	\$3.00	68+	•	•	
	Special Archery Deer Permit	Must be purchased at the same time as annual Archery license; cannot be sold separately. Archery license required unless under age 16. Antlered only.	\$26.00	All ages	•	•	
	Special Unit L Deer Permit****	Current NH Regular Hunting or Archery license required unless under age 16. Permits come with one tag (see page 18). Only available at nhfishandgame.com .	\$26.00	All ages		•	
	Special Unit M Deer Permit**	Current NH Regular Hunting or Archery license required unless under age 16. Permits come with two tags (see page 18). Also available at nhfishandgame.com .	\$36.00	All ages		•	•
	Muzzleloader License	Current NH Regular Hunting license required. Archery license does not qualify. No deer tag issued (see page 18).	\$16.00	16–67	•		
	Senior Muzzleloader License	Available to those born in 1948 or later, and at least 68 years of age at the time of purchase. Must be purchased annually. Current N.H. firearm hunting license required.	\$3.00	68+	•		
	Apprentice Hunting License*	Allows a one-time deferral of requirement for previous Hunting license or Hunter Education card. See page 25.	See page 25	16 & over	•	•	•
	Pheasant License	Current NH Regular Hunting or Archery license required.	\$31.00	16 & over	•		
	Migratory Waterfowl License	Current NH Regular Hunting or Archery license, and a Federal Duck Stamp required. See page 30 for HIP requirements.	\$11.00	16 & over	•		
	Turkey License	Current NH Regular Hunting or Archery license required unless under age 16.	\$16.00	All ages	•	•	
	Bear License	Current NH Regular Hunting or Archery license required unless under age 16.	\$16.00	All ages	•	•	
	Additional Bear Tag	For an additional bear in select WMUs. Must purchase Bear license first. Lifetime License holders must purchase to take second bear.	\$16.00	All ages	•	•	
	Trapping License*	Previous trapping license issued in NH within the previous 3 years or Trapper Education card required.	\$36.00	16–67	•		•
	Trapping License — Resident Minor*	Previous trapping license issued in NH within the previous 3 years or Trapper Education card required.	\$6.50	Under 16	•		•
	Trapping License — Milestone (68+)*	Previous trapping license issued in NH within the previous 3 years or Trapper Education card required.	Free	68+	•		•
	Fur Buyer License*		\$50.00	All ages	•		•
	Dog Training Permit*	Current NH Regular Hunting license required.	\$5.00	All ages			•
	Guide License, Hunting or Fishing*		\$100.00		•		•
	Duplicate Licenses and Permits	Lost licenses may be reprinted at the original issuing agent or at Fish and Game headquarters in Concord at no charge.	Free				

NOTE: An annual habitat fee of \$2.50 is required for all hunting licenses; this fee is charged once per year per hunter. All license prices include a \$1 agent fee. An additional \$2 transaction fee is charged for each license form purchased at an agent (\$2.75 online). All fees are subject to change.

Milestone Licenses: For N.H. residents born in 1947 or earlier who would like a hunting, fishing, archery, muzzleloader or clam/oyster license, they must obtain this free, permanent license at Fish and Game Headquarters, Regional Offices 1, 2, and 4, also available at select licensing agents, or by mail using the application at hunt.nh.com. Resident and Hunter Education requirements apply. All other licenses must be purchased each year.

NON-RESIDENT	TYPE OF LICENSE	COMMENTS	FEE	AGE	APPROPRIATE TAG MUST BE ATTACHED	ISSUED FROM CONCORD OFFICE ONLY
	Regular Combination Hunting and Fishing License***	Previous Hunting license or Hunter Education card required.	\$151.00	16 & over	•	
	Regular Hunting License	Previous Hunting license or Hunter Education card required.	\$113.00	16 & over	•	
	Muzzleloader License	Current NH Regular Hunting license required unless under the age of 16. No deer tag issued (see page 18).	\$41.00	All ages		
	Archery License	Previous Archery license or Bowhunter or combined Hunter/Bow Education card required.	\$83.00	16 & over	•	
	Special Archery Deer Permit	Must be purchased at the same time as Archery License; cannot be sold separately. Current NH Archery license required unless under age 16. Antlered only.	\$26.00	All ages	•	
	Special Unit L Deer Permit****	Current NH Regular Hunting or Archery license required unless under age 16. Permits come with one tag (see page 18). Only available at nhfishandgame.com .	\$26.00	All ages	•	
	Special Unit M Deer Permit**	Current NH Regular Hunting or Archery license required unless under age 16. Permits come with two tags (see page 18). Also available at nhfishandgame.com .	\$36.00	All ages	•	•
	Nonresident Small Game Hunting License	Previous Hunting license or Hunter Education card required. See Small Game, page 24. Pheasant and migratory waterfowl require additional license/stamp.	\$53.00	16 & over		
	Nonresident 3-Day Small Game Hunting License	Previous Hunting license or Hunter Education card required. See Small Game, page 24. Consecutive days only. Pheasant and migratory waterfowl require additional license/stamp.	\$25.00	16 & over		
	Apprentice Hunting License	Allows a one-time deferral of requirement for previous Hunting license or Hunter Education card. See page 25.	See page 25	16 & over	•	•
	Pheasant License	Current NH Regular Hunting, Archery or Small Game license required.	\$31.00	16 & over		
	Migratory Waterfowl License	Current NH Regular Hunting or Small Game or Archery license required. A Federal Duck Stamp is also required prior to hunting waterfowl. See page 30 for HIP requirements.	\$11.00	16 & over		
	Non-resident Student*	Full-time students attending school in N.H. may purchase non-resident hunting licenses at resident rates (see page 8). Must be registered for at least 12 credit hours per semester. Sold only at Fish and Game headquarters or by mail.		16 & over	•	•
	Turkey License	Current NH Regular Hunting license or Archery license required unless under age 16 (Small Game License does not qualify).	\$31.00	All ages	•	
	Bear License	Current NH Regular Hunting or Archery license required unless under age 16.	\$48.00	All ages	•	
	Additional Bear Tag	For an additional bear in select WMUs. Must purchase Bear license first.	\$48.00	All ages	•	
	Trapping License*	Previous trapping license issued in NH within the previous 3 years or Trapper Education card required. Available only if hunter's state of residence permits nonresident trappers.	\$301.00	All ages		•
	Fur Buyer License*		\$150.00	All ages		•
	Dog Training Permit*	Current NH Regular Hunting license required unless under the age of 16. Permits to train bear dogs are only permitted if your state of residence allows nonresident bear dog training or hunting (see huntnh.com/bear).	\$5.00	All ages		•
	Guide License, Hunting or Fishing*		\$100.00			•
	Duplicate Licenses and Permits	Lost licenses may be reprinted at the original issuing agent or at Fish and Game headquarters in Concord at no charge.	Free			

NOTE: An annual habitat fee of \$2.50 is required for all hunting licenses. This fee is charged once per year, per hunter. Proceeds are used to manage and protect habitat for New Hampshire's wildlife populations. All license prices include a \$1 agent fee. An additional \$2 transaction fee is charged for each license form purchased at an agent (\$2.75 online). All fees are subject to change.

* Licenses and Newborn Lifetime Gift Certificate issued only from Concord office may be obtained in person or through the mail by downloading a print-and-mail application from huntnh.com.

** Sold at Fish and Game headquarters in Concord and online.

*** Fishing licenses allow the taking of freshwater species.

****Only available online by lottery.

Buying Your License

New Hampshire hunting licenses can be purchased online at nhfishandgame.com, from one of our friendly license agents state-wide (listed at huntnh.com/agents), or in person or by mail at Fish and Game Headquarters, 11 Hazen Drive, Concord, NH 03301.

Carry Your License

The signed license must be carried on your person when hunting.

GENERAL HUNTING REGULATIONS

NEW Air Rifles

In New Hampshire, an air rifle is defined as a gun operated by compressed air or nonflammable gas cylinder by which a projectile of any size or kind can be discharged or propelled. Air rifles charged from an external high-compression power source may be used to take small game, deer, bear, and moose (permit required). Legal small game includes ruffed grouse or partridge, pheasant, quail, European partridge, chukar partridge, wild rabbit and hare, and gray squirrel. Air rifles used to take small game shall be no less than 0.22 caliber and shall deliver not less than 12-foot pounds of kinetic energy at the muzzle. Air rifles used to take deer or bear must be 0.35 caliber or larger and produce at least 400 foot-pounds of energy at the muzzle to take deer and bear and 0.45 caliber or larger for moose.

Baiting

Baiting is defined as the act of placing meat, carrion, honey, or any other food or ingestible substance (other than salt) capable of luring or attracting coyote, fur-bearing animals, game birds, or game animals with exception of gray squirrel. A baiting permit is required for any bait site. Current baiting permit applications (no fee) are available at any Fish and Game office or online at huntnh.com/licensing-forms. Applications for permits to bait wildlife on private property must be signed by the landowner. No bait shall be placed until two copies of the bait permit and topographic map have been submitted to the Wildlife Division at Fish and Game headquarters in Concord. **No bait may be placed from April 15 through August 31 (dates inclusive). Bait may not be placed at any site until the baiting season for that species is open. Outdated versions of baiting permits will not be accepted.**

- A landowner placing bait on his or her own property does not need to submit a baiting permit or map.
- No person, except a licensed N.H. Hunting Guide, guiding for bear or deer, shall have more than 2 active bait sites statewide. A licensed N.H. Hunting Guide shall have no more than 8 active bait sites, 6 for commercial use and up to 2 for personal use.
- Licensed N.H. Hunting Guides must indicate on the bait permit if the site is for commercial or personal use.
- Any bear taken off a commercial site must be tagged with a bear guide tag.
- A licensed guide can only use his/her guide tags on bears taken off commercial bait sites which are under his/her name.
- No bear taken off a personal site can be tagged with a bear guide tag.
- A baited area shall be considered an active bait site until any and all bait material is completely removed from the site.
- **Applications for baiting permits on private land must be received by the Department or postmarked by the**

first Monday in August for bear, and received by the Department or postmarked by the first Monday in October for all other species, except coyote, which may be received starting on December 1 for the following year.

- Each baiting permit must have a detailed topographic map, including a description of the location of the bait site and how to locate it. (If the map is so vague that a CO cannot find the site, the permit is invalid.)
- Only the person to whom the permit is issued is permitted to place bait at the site.
- The permittee **must post a 3" x 6" durable sign at the site** with the name and address of the permittee and up to 2 subpermittees. **These 3 individuals are the only persons allowed to hunt over the permitted bait site.** A licensed N.H. Hunting Guide must post a sign with his or her own name and address, but is not required to post the names of paying clients. The sign must be clearly visible not higher than 6 feet off the ground. If no subpermittees are identified on the sign, they may not be included at a later date. Once the sign has been posted, it may not be altered at a later date. No person other than the permittee authorized to place bait at a site shall remove, alter, or destroy said sign.
- **Bait may not be placed less than 300 feet** from a dwelling, public roadway, pathway, or trail.
- From the close of the bear baiting season through December 15, baiting for coyote shall be restricted to the use of meat, animal parts, carrion, or fish.
- No person shall place bait in public waters or on ice-covered public waters.
- **It is illegal to bait for turkey, moose, or migratory waterfowl.**
- Permits expire at the end of the calendar year, unless an earlier date has been specified on the permit form, or the season has ended for the species identified on the baiting permit.
- When requested by a CO, a permittee or an applicant to bait must accompany the officer to the proposed or existing site.

Baiting Rules for State-Owned and State-Managed Lands

In addition to the General Baiting Rules, the following rules apply to State-owned and State-managed lands:

- A baiting permit is required for any bait site on State-owned or State-managed lands, including White Mountain National Forest.
- **Applications for baiting permits on State-owned or State-managed lands must be received by the Department or postmarked between the first Monday in June and the first Monday in August for deer and bear. Applicants may apply beginning December 1 for permits to bait coyote for the year following. Permit applications for all other species shall be accepted at any time.**

- Applications must be filled out completely, and must include a topographic map and directions to the bait site to be considered. Baiting permits are issued on a first-come, first-served basis, except permits for the Connecticut Lakes Headwaters Forest, which are issued by lottery (visit wildlife.nh.gov/hunting-nh/wildlife-baiting for more information). One copy of the bait permit application shall be submitted to the **Law Enforcement Division** at Fish and Game headquarters in Concord.
- No person, including a licensed N.H. Hunting Guide, shall have more than 1 active bait site within an individual trapping unit. Visit huntnh.com for details regarding trapping units.
- Non-edible or non-digestible materials or 100% salt products shall not be used as bait.
- A total of 40 bait sites to bait bear, and 20 bait sites for other species shall be allowed on the Connecticut Lakes Headwaters Forest property in Pittsburg, NH and issued by lottery (see above).

Baiting Rules for Bear

In addition to all other applicable baiting rules, the following rules apply to baiting for bear (see page 29 for bear baiting season dates):

- **No person shall establish, tend, or hunt bear over a bait containing chocolate or any cocoa derivative.** White chocolate may be used as bait.

Baiting Rules for Deer

In addition to all other applicable baiting rules, the following rules apply to baiting for deer (for deer baiting season dates, see page 18):

- No person shall place bait for the purpose of attracting and taking deer prior to the opening of the deer baiting season (page 18).
- Persons holding a Disabled Veteran License or Paraplegic License may bait deer from September 15 through December 15, statewide.

Note: Please refrain from calling into the department requesting a status update on your baiting permit. A department representative will be in touch if a problem arises.

Dead Animals

If you find a dead deer, bear, moose, or turkey you did not kill, do not tag or move it. **Motor-vehicle killed wildlife may not be taken without permission of a law enforcement officer.** Call Law Enforcement Dispatch at (603) 271-3361.

Discharge Restrictions/ Compact Areas (RSA 207: 3-a & 644:13)

- It is illegal to discharge a firearm or shoot with a bow and arrow or crossbow and bolt or a .22 caliber or larger air rifle when used for hunting purposes within 300 feet of a permanently occupied dwelling without permission of the owner or occupant, or from the owner of the land on which the person shooting the

SHOP ONLINE OR IN-STORE



White Birch
ARMORY

11 AM - 8 PM
EVERY DAY



OFFICIAL LICENSING AGENT AND CHECK STATION FOR NEW HAMPSHIRE FISH & GAME



WBARMORY.COM

(603) 330-0146

80 Industrial Park Drive
Dover, NH 03820

SHOP NEW & USED FIREARMS
ACCESSORIES • TRAIN • EAT

\$25 OFF*

your in-store purchase of \$200
or more! Valid thru August 31, 2025.

*Non-sale, in-stock items only. No cash value.
Must present coupon for redemption. No copies.
Cannot combine with any other offer or promotion.
Offer subject to change without notice. One per customer.
Excludes used firearms, gift cards, classes, and private instruction.



GENERAL HUNTING REGULATIONS

firearm, air rifle, bow and arrow, or crossbow and bolt is situated. A firearm may not be discharged within 300 feet of any commercial, educational or medical building, or outdoor public gathering place.

- Firearms may not be discharged within the compact area of any town or city (any contiguous area containing 6 or more buildings used as part-time or permanent dwellings where each is within 300 feet of one of the other buildings, plus a 300-foot-wide perimeter around all of the buildings).
- It is unlawful to discharge a firearm, air rifle, bow and arrow, or crossbow and bolt within 15 feet of the traveled portion of, or across any class I through V highway, or from or across the following public highways (including the rights of way): I-93, I-89, I-95, 293, 393, Rte. 202/9 (from Rte. 114 in Henniker to Rte. 31 in Hillsboro), Rte. 16 (from I-95 to Milton/Middleton town line), Rte. 3/F.E. Everett Turnpike (from Mass. line to Rte. 101 Bedford), or Rte. 101 (from Bedford town line to Rte. 1 Hampton).

Game Cameras

Hunters are required to have written or verbal landowner permission to place game cameras on their property. State and municipal lands are exempt. Permissions granted expire on December 31 of each year unless extended or revoked by the landowner.

- All cameras must be labeled with the name and contact information of the camera owner in a manner that is visible while mounted.
- No person shall take, or attempt to take, a game animal or fur-bearing animal within the same calendar day of remotely viewing any image or video of that animal from a game camera in that area.

Guides

Additional regulations apply to licensed New Hampshire Hunting Guides. Contact the Law Enforcement Division at (603) 271-3127.

Lacey Act

Interstate transportation of wildlife taken, possessed, transported, or sold in violation of a state law is a violation of federal law. The penalty can be up to \$250,000 and 5 years in prison.

Leashed Dog Trackers

Volunteer leashed dog trackers are private citizens who can help track and recover wounded deer, moose, and bear. They are licensed by the N.H. Fish and Game Department for this activity, which may take place at night. Give them a call, they can help. Visit huntnh.com for a list of licensed leashed dog trackers.

OHRV Use

Use of OHRVs (ATV, trail bike, UTV) requires written landowner permission unless on a sanctioned ATV trail and they must be registered when operating off your own property.

Tree Stands/Blinds

- A portable or temporary tree stand or observation blind may be placed on the land of another person from April 25–June 1 and from August 1–December 31. All portable or temporary tree stands or observation blinds must be removed from the property by June 1, unless allowed by permission from the property owner or designee.
- All tree stands or observation blinds must be labeled with the name and contact information of the owner in a clearly visible manner.

Written landowner permission is required for any tree stand, ladder, or observation blind which damages or destroys a tree by inserting into the tree any metallic, ceramic, or other object. Written landowner permission is also required if any tree is cut in conjunction with the use of any stand or blind, to construct a pit blind, or for any permanent stands or blinds.

This permission is required to be with the person while afield. On State-owned and State-managed lands, permanent stands are illegal.

- All landowner permissions expire December 31 unless revoked by the landowner beforehand.

Towns with Special Rules

See page 22 for restrictions.

It Is Unlawful To:

- Negligently shoot, wound, or kill a human being while hunting, or abandon a wounded or killed human being.
- Negligently discharge a firearm or cause death, injury, or damage to domestic animals or property while hunting.
- Shoot any wildlife that has been treed or cornered by a dog unless the owner of the dog or a member of the hunting party is present.
- Shoot a domestic dog in pursuit of wildlife.
- Possess a firearm with ammunition, bow and arrow, or crossbow and bolt while attempting to locate or illuminate wild animals at night at any time of the year, except while coyote night hunting from January 1–March 31, raccoon hunting (see page 32), or checking traps at night (see page 34).
- Illuminate wild animals from Sept. 1 through Dec. 31. Moose, however, may be illuminated between 9 a.m. and 11 p.m. from Sept. 1 through the second Monday of October in Coos County on Class I, II, and III state highways, and, with city or town permission, on Class IV, V, and VI town roads.
- Take wildlife by the use of a spring gun or set gun.
- Use an unmanned aerial vehicle, such as a drone, to attempt to locate, surveil, or aid or assist in the taking of wildlife.
- Use “smart rifles” while hunting wildlife (firearms that are electronically controlled, electronically assisted, or have a computer-linked trigger that aids the shooter in tracking an animal, or assists in accuracy regarding the placement and timing of the shot).
- Hunt from inside of, or upon, any type of motorized vehicle, including aircraft, motor vehicle, snowmobile, or OHRV.
- Hunt from a boat or canoe before all movement from mechanical power has stopped.
- Carry a cocked crossbow in or on a motor vehicle, OHRV, snowmobile, or aircraft, when moving, or in or on a boat or other craft while being propelled by mechanical power.
- Carry a loaded rifle, shotgun, muzzleloader, or air rifle, in or on a motor vehicle, OHRV, snowmobile, or aircraft when moving, or in or on a boat or other craft being towed by a boat or other craft propelled by mechanical power. These restrictions do not apply to:
 - » Loaded pistols or revolvers, or
 - » To a person or a person's agent while in the act of protecting his or her interest in their livestock or crops
- Enter posted land without permission of the owner or fail to leave when requested.
- Willfully tear down, obstruct, or leave open any fence, gate, or bar belonging to, or enclosing land of, another person, or remove or deface any posted sign or property.
- Hunt with a fully automatic firearm. It is also illegal to hunt with a semi-automatic rifle loaded with more than six cartridges (except rimfire rifles and pistols).
- Use full-jacketed metal case bullets.
- Buy, sell, or offer for sale a deer, bear, moose, or any part thereof, other than the head, hide, or feet.
- Possess a deer, bear, moose, or turkey that hasn't been properly tagged.
- Possess a detached deer, bear, moose, or turkey tag. Upon killing a deer, bear, moose, or turkey, the tag shall be immediately filled out and attached.
- Assist another in taking a deer or bear after you have taken one, unless you possess a valid unused tag or are accompanying a minor.
- Tag, steal, take, or carry away any game belonging to another person.
- Dispatch a wounded deer, bear, moose, turkey, or other game animal that is not permitted to be taken at night with a firearm, unless you are a licensed dog tracker.

WHERE CAN I HUNT IN NEW HAMPSHIRE?

In New Hampshire, we are fortunate that all state, federal, municipal, county, and private lands are considered open to hunting unless posted otherwise. But remember, hunting access is a privilege granted by landowners — it's not a right, and should not be taken for granted. Actions that are disrespectful to lands and their owners often result in a "posted" sign. Build positive relationships with property owners, and always be sure to express your gratitude to them at the open and close of every hunting season.

In general, the best place to start looking for a hunting spot is a good map—like the *New Hampshire Atlas and Gazetteer* from Delorme or a “topo” map. To find out who owns a piece of land that’s not labeled as a public park or forest, check the tax maps at the town office.

There are three general categories of land ownership in the state, all of which allow hunting with a few exceptions:

- **State and Federal Lands:** The White Mountain National Forest is the largest piece of public land in the state (751,000 acres). Hunting is permitted throughout the Forest; however, discharging a firearm is prohibited within 150 yards of a campsite, developed recreation site, occupied area, or on or across a Forest Service road or trail. The Forest has roads open to motor vehicles and gated roads open to foot travel only; if you’re willing to hike a longer distance, this gives you a rare opportunity to hunt locations without the normal pressure of more accessible properties. OHRVs are only allowed during winter on designated and officially opened snowmobile trails. For more information, contact White Mountain National Forest. Other large parcels of federal land include the Lake Umbagog National Wildlife Refuge and several units of the Silvio Conte National Wildlife Refuge. Most state lands are open to hunting, including some 75,000 acres of state parks and almost 96,000 acres of state forests. (Always steer clear of recreational areas and trails.) In addition, the N.H. Fish and Game Department owns about 53,000 acres distributed over nearly 100 tracts, most of which are called Wildlife Management Areas or WMAs. Fish and Game also holds

conservation easements on more than 19,000 acres. These are parcels of undeveloped land designated as areas for wildlife resource conservation, hunting, and fishing. The state also acquired an easement that allows hunting on more than 146,000 acres in the Connecticut Lakes Headwaters area. The Fish and Game website (huntnh.com) has maps and descriptions for the larger WMAs which are accessible on your mobile device.

- **Large Private Forest Land:** Given New Hampshire’s long history of open access to forest lands, most large landowners have kept their property open to hunting. Weather conditions can result in unexpected gate closures at any time. Timber management is the primary use on these lands, so please yield the right of way to logging trucks and be respectful and careful around ongoing logging operations. You can help make sure that these lands stay open by treating them well: stay off wet or soft roads; give the right-of-way to logging trucks and equipment; do not park or block any road or barway; respect gated or closed roads; and know the rules regarding the use of ATVs. It’s best to make local contacts for information and any special rules about hunting on these private lands.
- **Small Private, County, Municipal, and Conservation Easement Lands:** Eighty percent of New Hampshire’s forest land is privately owned. Access to smaller parcels of private land varies across the state. We recommend that you personally contact the landowner for permission before going hunting on all private land, but particularly smaller parcels. In addition to privately

owned parcels, many properties are under conservation easements held by the state, a municipality or nonprofit organization, and some county and municipal lands, like watershed protection areas, are also open to hunting—be sure to check locally for special rules.

If you are hunting in New Hampshire this fall, you can expect to find plenty of great opportunities and places. Now it’s up to you to get outdoors, do some scouting, find the right habitat, figure out where the wildlife spend their time, and be ready for the big day—the woods are waiting!

Check N.H. Fish and Game’s website at huntnh.com for more ideas on where to hunt.

Hunter Orange Recommendation

Any person hunting with a firearm or bow and arrow during New Hampshire hunting seasons, except for a person legally hunting waterfowl, should wear a hat, vest or other suitable article of clothing of material in the color of hunter orange visible from all sides at a minimum distance of 200 feet.

Be sure you positively identify your target—and beyond—before you shoot.

YOUTH HUNTING IN N.H.

Matching wits with wildlife,
braving the elements,
testing themselves —
a new generation is
discovering a passion
for hunting!

Special N.H. Youth Hunt Weekends

New Hampshire's special youth hunt weekends are about much more than hunting. They're a unique opportunity for kids to spend time in the woods with a parent, grandparent, or adult mentor and share the outdoors experience without the pressure of competing with thousands of adult hunters.

Waterfowl September 27–28, 2025

Deer (either sex) October 25–26, 2025

Turkey* April 25–26, 2026

NEW Pheasant September 27–28, 2025

All NH hunting rules apply during special youth hunts. In addition, accompanying adults may not carry a firearm, bow and arrow or crossbow that could lawfully be used for the purpose of take, and may not take game. Adults may not accompany more than two youths during the deer and turkey youth hunts. Deer taken by youths during the special weekend shall constitute the one deer allowed by firearm per hunter.

* Turkey License required.

See page 31 for youth waterfowl hunting requirements.

Hunting with young people allows them to develop their observational skills, and helps them gain the confidence and comfort level they need to enjoy a lifetime in the outdoors. We hope you'll share your experience and take a young hunter out this fall; it will be a priceless experience for you as a mentor—and for your young friend as a future hunter, conservationist, and adventurer!

the adult may not possess a firearm or take any game.

Hunter Education is not required for youth hunters under age 16, but youths should try to complete the Hunter Education course sometime between the age of 12 and their 16th birthday; that way, they'll have the required Hunter Education certification when they apply for their first hunting license after they turn 16.

Youth Regulations

There is no minimum age for hunting in New Hampshire. Youth hunters (under the age of 16) may hunt during all regular hunting seasons when accompanied by a properly licensed adult hunter who is at least 18 years of age. All NH hunting rules apply.

"Accompanied" means within sight and hearing, excluding electronic devices, when actual physical direction and control can be affected. A properly licensed adult is one who possesses any license or permit needed for the species being hunted and the method being used by the youth hunter.

No regular NH hunting or archery license is required for hunters under 16 years of age, but there are certain tags youth must possess — see chart on pages 8–9 for required licenses and permits.

All deer, bear, and turkey must be tagged and registered according to rules applying to those species for adults. Deer taken by youth hunters shall be tagged using the tag titled "Special Deer Tag" provided on page 21 of this digest. Adult hunters who have filled their tags are allowed to accompany a youth hunter, but

Wildlife and Sport Fish Restoration: Over 85 Years of Restoring, Managing and Researching Fish and Wildlife

Our thanks to hunters, shooters, anglers, boaters, and our industry partners! With the purchase of firearms and ammunition, archery equipment, fishing equipment, and motorboat fuels, hunters, anglers, boaters and manufacturers pay excise taxes that are distributed to state fish and wildlife agencies for approved projects.

The U.S. Fish and Wildlife Service joins state fish and wildlife agencies, private industry, and the public in a partnership to conserve fish and wildlife resources.

With millions in federal aid funding over more than 85 years, NH Fish and Game has been able to:

- Gain knowledge through research
- Manage fish and wildlife populations
- Acquire Wildlife Management Areas
- Improve and protect fish and wildlife habitat
- Restore fish and wildlife populations
- Conduct Hunter and Aquatic Education programs
- Construct, upgrade, and maintain more than 140 public access sites for boating and fishing.

Your purchase of hunting and fishing equipment and motorboat fuels supports wildlife and sport fish restoration and boating access facilities.



Enjoy your hunt, and follow these basic safety guidelines to get home safe and sound. Most important of all, keep the muzzle of your gun pointed in a safe direction at all times. Be 100% sure not only of your target, but what's beyond it; even small bullets can travel a mile and half. No hunter, especially when "swinging" on game, should allow his or her gun to point at a person. Better to pass up a shot than risk injuring someone or damaging property.

- **Deer/Bear/Small Game Hunters:** Only load your gun when you're ready to hunt, and unload it immediately after. Also, it's hard to overstate the importance of wearing a fluorescent orange hat, vest, or jacket.
- **Crossbows:** It is unlawful to have a crossbow cocked while transporting it in a vehicle. Treat a cocked crossbow like a loaded firearm.
- **Turkey Hunters:** Never stalk a turkey—instead, scout out a good spot, call and wait for the turkeys to come to you. Always wear blaze orange as you enter and leave an area. Tie orange survey tape around a nearby tree to alert other hunters to your presence. Lean against a backstop that's at least as wide as your shoulders. Avoid clothes that are red, white and blue and black, the colors of the male turkey.
- **Pheasant Hunters:** It is critically important that bird hunters know their surroundings and the whereabouts of their hunting partners and others before taking a shot. When a bird goes up and you are not sure where everyone is, hold your fire. Control the muzzle of your firearm at all times, and always maintain a safe zone of fire—the area in which you can shoot. Wear safety glasses and hunter orange on your head, back, and chest.
- **Muzzleloaders:** Black powder technology is getting better all the time, drawing more participants to this time-honored tradition. Treat every muzzleloader as if it were holding a charge, and mark the ramrod so you can easily check. Be extra careful to attach the ignition source only when you're ready to hunt—once primed, the gun is ready to fire.
- **Tree Stands:** A number of serious incidents have happened to N.H. hunters using tree stands in recent years. Stay safe by always using a properly fitting full-body harness while climbing trees, installing or hunting from an elevated platform or tree stand. Never carry hunting equipment up or down

Rules for Safe Hunting

1. Control the muzzle of your firearm. It should be pointed in a safe direction at all times. Treat every firearm as if it were loaded!
2. Be sure of your target and look beyond, before you ever raise your firearm or draw your bow.
3. Wear hunter orange to make yourself more visible to other hunters. Never assume you are alone in the woods.

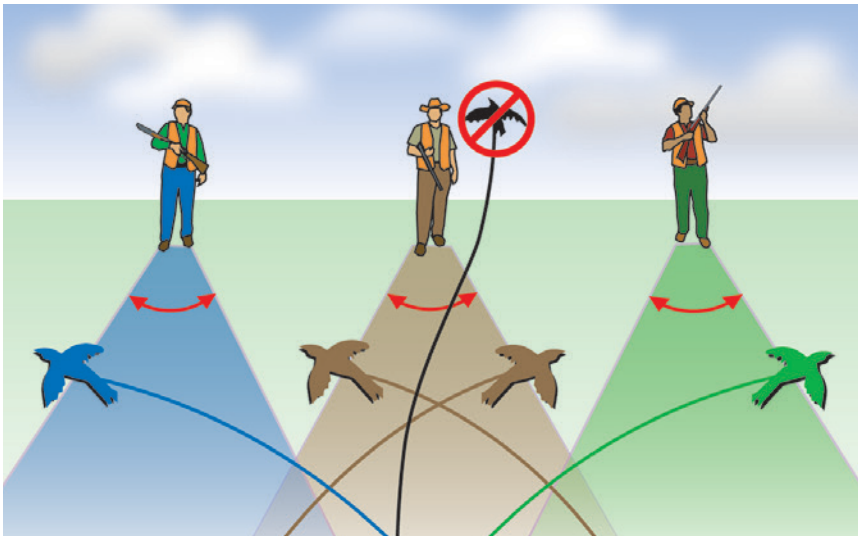
the tree with you, always use a haul line. When hauling a gun into or out of a tree stand, keep the firearm muzzle pointed away from you. Keep firearms unloaded and the actions open, and broadheads in a hard-cased quiver, when using a haul line.

Landowner Courtesy Card

Hunters are encouraged to complete this card and provide it to the landowner after permission to access or hunt on their land has been granted.

Hunter's Name:		Year:
Address:		
Email Address:		
Home Phone:		Cell Phone:
NH Hunting License #:		
Vehicle Type, Make, and Color:		License Plate # and State:

A hunter's zone of fire changes with every step. Remain alert and aware of your companions' locations at all times.



Used by permission. Copyright © 2010 Kalkomey Enterprises, Inc.

Win a \$100 Gift Card!

Take the monthly



And be entered to win a \$100 gift certificate to your sporting good retailer of choice.

Your anonymous participation advances fish and wildlife conservation, helps protect your right to hunt, fish and shoot, and guides companies in developing better outdoor products.

WILDLIFE MANAGEMENT UNITS

NOTE: Whenever a wildlife management unit (WMU) is referenced with only a letter, and that WMU has been divided into sub-wildlife management units with a number, or further divided into smaller units, the single letter reference includes all of the area enclosed by those sub-units. For example, WMU C would mean WMUs C1 and C2.

Unit A: From the Colebrook/Lemington bridge in Colebrook, north along the NH/VT state line to the NH/Quebec border, north along the U.S. border to NH/ME state line, south along the ME/NH state line to Rte. 16 in Wentworth's Location, south on Rte. 16 to Rte. 26 in Errol, west on Rte. 26 to Rte. 3 in Colebrook, north on Rte. 3 to Lemington Rd. in Colebrook, west on Lemington Rd. to Colebrook/Lemington bridge & the NH/VT state line.

Unit B: From the junction of the Connecticut River and the Upper Ammonoosuc River in Northumberland, north along the NH/VT state line to the Colebrook/Lemington bridge in Colebrook, east on Lemington Rd. to Rte. 3 in Colebrook, south on Rte. 3 to Rte. 26 in Colebrook, east on Rte. 26 to Rte. 16 in Errol, south on Rte. 16 to Rte. 110-A in Dummer, west on Rte. 110-A to Rte. 110 in West Milan, west on Rte. 110 to Rte. 3 in Groveton, north on Rte. 3 in Groveton to the Upper Ammonoosuc Bridge, west along the Upper Ammonoosuc River to its junction with the Connecticut River.

Unit C1: From the junction of the Lost Nation Rd. in Northumberland and Rte. 110, east along Rte. 110 to Rte. 16 in Berlin, south on Rte. 16 to Rte. 2 in Gorham, west on Rte. 2 to North Rd. in Jefferson, north along North Rd. to Grange Rd., north on Grange Rd. to Lost Nation Rd., north on Lost Nation Rd. to the junction of Lost Nation Rd. and Rte. 110 in Northumberland.

Unit C2: From the junction of Rte. 16 in Wentworth's Location and the ME/NH line, south on Rte. 16 to Rte. 110-A in Dummer, west on Rte. 110-A to Rte. 110 in Milan, south on Rte. 110 to Rte. 16 in Berlin, south on Rte. 16 to Rte. 2 in Gorham, east on Rte. 2 to the NH/ME state line, north on the NH/ME state line to its junction with Rte. 16 in Wentworth's Location.

Unit D1: From the junction of the Lost Nation Rd. in Northumberland & Rte. 110, south along Lost Nation Rd. to Grange Rd., south on Grange Rd. to North Rd., south on North Rd. to Rte. 2 in Jefferson, east on Rte. 2 to Rte. 115 in Jefferson, south on Rte. 115 to Rte. 3 in Carroll, south on Rte. 3 to I-93 in Franconia, north on I-93 to the NH/VT state line, north on the NH/VT state line, to the junction of the Connecticut and Upper Ammonoosuc River in Northumberland, east along the Upper Ammonoosuc River to the Groveton/Rte. 3 bridge, south along Rte. 3 in Groveton, east on Rte. 110 to the junction of Rte. 110 and the Lost Nation Rd.

Unit D2-west: From the junction of Rte. I-93 and the Vermont border in Littleton, south on I-93 to Rte. 142 in Franconia, south on Rte. 142 to Rte. 18, west on Rte. 18 to Rte. 116, south on Rte. 116 to Rte. 112 and Rte. 116, west on Rte. 116 to Long Pond Rd. (i.e., North/South Rd.) in Benton, south on Long Pond Rd. to High St. in Glencliff, south on High St. to Rte. 25, south on Rte. 25 to Rte. 25-A in Wentworth, west on Rte. 25-A to Rte. 10 in Orford, north on Rte. 10/ 25-A, then west on Rte. 25-A across the Fairlee Bridge, to the VT/NH border, then north on the VT/NH border to its intersection with Rte. I-93 in Littleton.

Unit D2-east: From the junction of Rte. I-93 and Rte. 142 in Franconia, south on Rte. I-93 to Rte. 112 in Woodstock, south west on Rte. 112 to Rte. 118 in Woodstock, south west on Rte. 118 to Rte. 25 in Warren, north on Rte. 25 to High St., north on High St. to Long Pond Rd.

(i.e., North/South Rd.), north on Long Pond Rd. to Rte. 116 in Benton, north on Rte. 116 to Rte. 18 in Franconia, east on Rte. 18 to Rte. 142, north on Rte. 142 to the intersection with Rte. I-93.

Unit E: From the junction of Rte. 115 & Rte. 2 in Jefferson, east on Rte. 2 to NH/ME state line in Shelburne, south along the NH/ME state line to Rte. 302 in Conway, west on Rte. 302 to Rte. 16 in Conway, south on Rte. 16 to Rte. 112 in Conway, west on Rte. 112 to I-93 (exit 32) in Woodstock, north on I-93 to Rte. 3 (Franconia Notch) in Lincoln, north on Rte. 3 to Rte. 115 in Carroll, north on Rte. 115 to Rte. 2 in Jefferson.

Unit F: From the junction of Rte. 25-A & Rte. 25 in Wentworth, north on Rte. 25 to Rte. 118 in Warren, north on Rte. 118 to Rte. 112 in North Woodstock, east on Rte. 112 to Rte. 16 in Conway, south on Rte. 16 to Rte. 113 in Chocorua, west on Rte. 113 to Rte. 113-A in Tamworth, west on Rte. 113-A to Rte. 113 in North Sandwich, west on Rte. 113 to Rte. 3 in Holderness, south on Rte. 3 to Exit 24 of I-93, north on I-93 to Rte. 25 (exit 26) in Plymouth, west on Rte. 25 to the junction with Rte. 25-A in Wentworth.

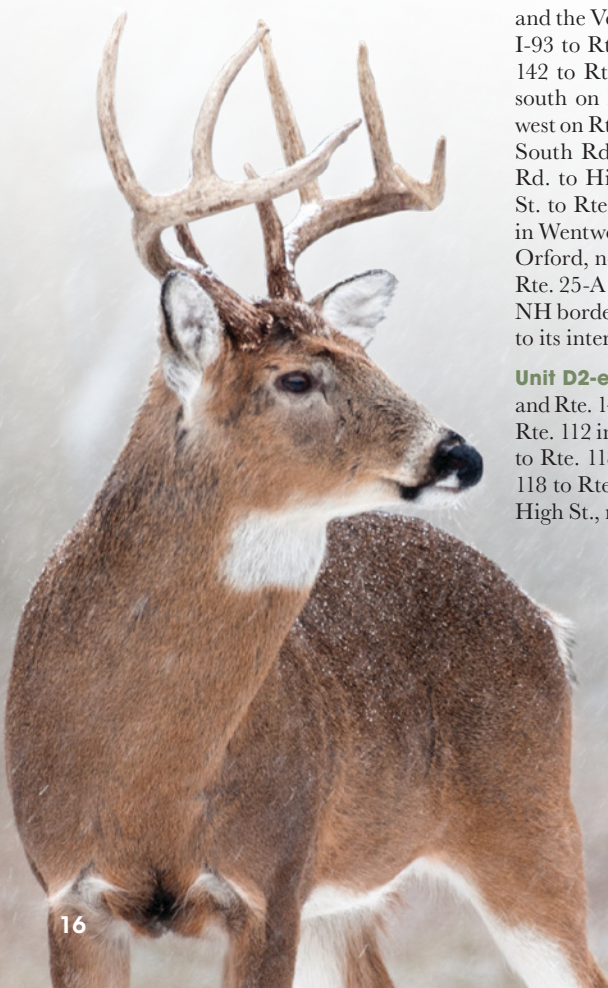
Unit G1: From the junction of Rte. 25-A and the VT/NH border in Orford, east on Rte. 25-A to Rte. 10 in Orford, south on Rte. 10 to Rte. 25-A in Orford, east on Rte. 25-A to Rte. 25 in Wentworth, southeast on Rte. 25 to Rte. 118 in Rumney, south on Rte. 118 to Rte. 4 in Canaan, south and east on Rte. 4 to Rte. 11 in Andover, west on Rte. 11 to Rte. I-89 in New London, west on Rte. I-89 to the VT/NH border, north on the VT/NH border to its intersection with Rte. 25-A in Orford.

Unit G2: From the junction of Rte. 118 and Rte. 25 in Rumney, southeast on Rte. 25 to Exit 26 of Rte. I-93 in Plymouth, south on Rte. I-93 to Rte. 104 in New Hampton, west on Rte. 104 to Rte. 4 in Danbury, north on Rte. 4 to Rte. 118 in Canaan, north on Rte. 118 to Rte. 25 in Rumney.

Unit H1: From the junction of I-89 and the NH/VT state line in Lebanon, south on I-89 to Rte. 10 in Grantham, south on Rte. 10 to Rte. 123 in Marlow, west on Rte. 123 to its junction with the Cold River in Walpole, west on Cold River to the NH/VT border (Connecticut River), north on the NH/VT border to I-89 in Lebanon.

WMU Maps Online

Detailed maps of the Wildlife Management Units described on these pages are available to download and print at the N.H. Fish and Game website, huntnh.com, on the "Maps" page. If you do not have access to a computer, you may request single copies of WMU maps at Fish and Game's Concord office.



Unit H2: From the junction of Cold River and NH/VT border (Connecticut River) in Walpole, east on Cold River to Rte. 123, east on Rte. 123 to Rte. 9 in Stoddard, east on Rte. 9 to Rte. 202 in Hillsborough, south on Rte. 202 to the NH/MA border, west on the NH/MA border to the NH/VT border (Connecticut River), north on the NH/VT border (Connecticut River) to its intersection with the Cold River in Walpole.

Unit I1: From the junction of I-89 and Rte. 11 in New London, north on Rte. 11 to Rte. 4 in Andover, north on Rte. 4 to Rte. 104 in Danbury, north on Rte. 104 to I-93 in New Hampton, south on I-93 to I-89 in Concord, north on I-89 to Rte. 11 in New London.

Unit I2: From the junction of I-89 and Rte. 10 in Grantham, south on I-89 to Rte. 9 in Hopkinton, south on Rte. 9 to Rte. 123 in Stoddard, west on Rte. 123 to Rte. 10 in Marlow, north on Rte. 10 to I-89 in Grantham.

Unit J1: From the junction of Rte. 113 and Rte. 3 in Holderness, north on Rte. 113 to Rte. 113-A in Sandwich, north on Rte. 113-A to Rte. 113 in Tamworth, east on Rte. 113 to Rte. 16 in Chocorua, north on Rte. 16 to Rte. 302 in Conway, east on Rte. 302 to the ME/NH line, south on ME/NH line to Rte. 109 west on Rte. 109 to Rte. 28 in Wolfeboro Center, south on Rte. 28/109 to Rte. 109 in Wolfeboro, north on Rte. 109 to Rte. 25 in Moultonboro, west on Rte. 25 to Rte. 25B in Center Harbor, along Rte. 25B to Rte. 3, north on Rte. 3 to its junction with Rte. 113 in Holderness.

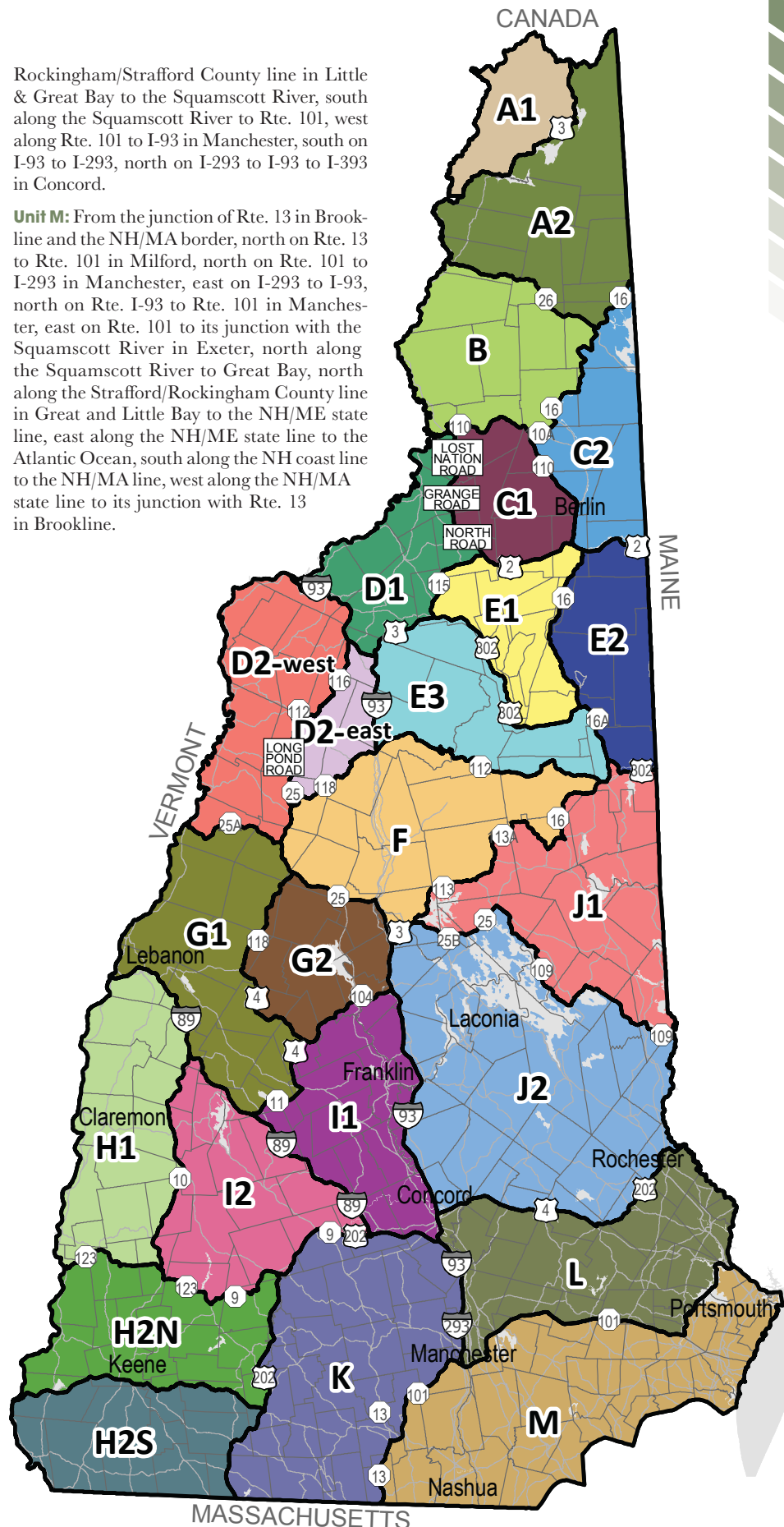
Unit J2: From the junction of Rte. I-93 and Rte. 3 in Ashland, south on Rte. 3 to Rte. 25B in Center Harbor, east on Rte. 25B to Rte. 25 in Center Harbor, east on Rte. 25 to Rte. 109 in Moultonboro, southeast on Rte. 109 to Rte. 28/109 in Wolfeboro, north on Rte. 28/109 to Rte. 109 in Wolfeboro Center, east on Rte. 109 to its intersection with the ME/NH border, south along the ME/NH border to Rte. 202 in Rochester, south on Rte. 202 to Rte. 4 in Northwood, west on Rte. 4 to I-393 in Pembroke, west on I-393 to I-93 in Concord, north on I-93 to the junction of Rte. 3 in Ashland.

Unit K: From the junction of Rte. 9 and Rte. 202 in Hillsborough, south on Rte. 202 to the NH/MA state line, east on the NH/MA state line to Rte. 13 in Brookline, north on Rte. 13 to Rte. 101 in Milford, north on Rte. 101 to I-293 in Manchester, north on I-293 to I-93, north on I-93 to I-89 in Concord, west on I-89 to Rte. 9 in Hopkinton, south on Rte. 9 to its junction with Rte. 202 in Hillsborough.

Unit L: From the junction of I-93 & I-393 in Concord, east on I-393 to Rte. 4, east on Rte. 4 to Rte. 202 in Northwood, north on Rte. 202 to NH/ME state line, south along the NH/ME state line to Little Bay, south along the

Rockingham/Strafford County line in Little & Great Bay to the Squamscott River, south along the Squamscott River to Rte. 101, west along Rte. 101 to I-93 in Manchester, south on I-93 to I-293, north on I-293 to I-93 to I-393 in Concord.

Unit M: From the junction of Rte. 13 in Brookline and the NH/MA border, north on Rte. 13 to Rte. 101 in Milford, north on Rte. 101 to I-293 in Manchester, east on I-293 to I-93, north on Rte. I-93 to Rte. 101 in Manchester, east on Rte. 101 to its junction with the Squamscott River in Exeter, north along the Squamscott River to Great Bay, north along the Strafford/Rockingham County line in Great and Little Bay to the NH/ME state line, east along the NH/ME state line to the Atlantic Ocean, south along the NH coast line to the NH/MA line, west along the NH/MA state line to its junction with Rte. 13 in Brookline.



DEER HUNTING

Deer are New Hampshire's most popular game animal, with a total of over 100,000 deer found throughout the state. New Hampshire has a long archery season starting September 15, a muzzleloader season 11 days prior to the firearms season, and a firearms season during the peak of the rut. (See the chart for "any deer" days, when hunters may take a doe or a buck.) Special Unit L permits allow hunters to take an additional antlerless deer in WMU L. Special Unit M permits allow hunters to take two additional antlerless deer in WMU M. For more information, visit huntnh.com/deer.

Deer Hunting Licensing Requirements

All hunters, with the exception of those eligible to use the special deer tag (see page 21), must have a valid deer tag that has not been detached from their license/permit. Deer may be hunted using a variety of licenses and tags (for more details, see pages 7–9):

Archery License: allows the taking of one deer of either sex using a bow and arrow during the archery deer season. A crossbow may also be used in WMUs D2W, G1, G2, H1, H2, I1, I2, J1, J2, K, L, and M.

Regular Hunting or Combination License: allows the taking of one deer during the regular firearms deer season (Wildlife Management Unit restrictions apply).

Muzzleloader License: allows the holder of a Regular N.H. Hunting or Combination License to take a deer using a muzzleloader, crossbow, or bow and arrow during the special muzzleloading deer season, using the firearms deer tag. Nonresident youths and resident landowners must purchase this license to participate in the muzzleloader season. This license does not include a separate tag.

Special Archery Deer Permit: allows the taking of an additional antlered deer using bow and arrow during the archery season. A crossbow may also be used in WMUs D2W, G1, G2, H1, H2, I1, I2, J1, J2, K, L, and M. Each hunter is limited to one of these permits. Archery hunters may only buy this permit when purchasing their regular archery license. This permit may be used to tag the first or second deer taken by archery if it is legally antlered. All ages.

Special Unit L Permit: allows the taking of antlerless deer in WMU L, in addition to deer taken using a Regular N.H. Hunting or Archery License. It may be used on any day, including antlered deer only days, during any deer season the hunter holds a license for (archery, muzzleloader or firearm). Method of take limited to what is legal for the particular season being hunted. All ages. **Note: A total of 3,500 hunters were allowed to purchase Special Antlerless Deer Permits for WMU L, with one deer tag (\$26). Unit L permits are issued through an online lottery with an application period opening in the beginning of July.**

Special Unit M Permit: allows the taking of antlerless deer in WMU M, in addition to deer taken using a Regular N.H. Hunting or Archery License. It may be used on any day, including antlered deer only days, during any deer season the hunter holds a license for (archery, muzzleloader or firearm). Method of take limited to what is legal for particular season being hunted. All ages.

Note: A total of up to 4,000 hunters will be allowed to purchase Special Antlerless Deer Permits for WMU M; the permit comes with two deer tags (\$36). Available near the end of July online and at NHFG Headquarters, first-come, first-served basis.

2025 DEER SEASON DATES

SEASON		INCLUSIVE DATES	WILDLIFE MANAGEMENT UNITS
Archery	Any deer	Sept. 15–Dec. 8	WMU A - Note: Archery deer season ends one week early.
	Any deer	Sept. 15–Dec. 15	B–M
Muzzleloader	Antlered deer only	Nov. 1–Nov. 11	A, B, C1, C2, D1
	Any deer	Nov. 1	D2E, E
	Antlered deer only	Nov. 2–Nov. 11	
	Any deer	Nov. 1–Nov. 2	F, G2, I2
	Antlered deer only	Nov. 3–Nov. 11	
	Any deer	Nov. 1–Nov. 3	I1
	Antlered deer only	Nov. 4–Nov. 11	
	Any deer	Nov. 1–Nov. 4	H1, H2, J1, J2, K
	Antlered deer only	Nov. 5–Nov. 11	
	Any deer	Nov. 1–Nov. 5	D2W
	Antlered deer only	Nov. 6–Nov. 11	
	Any deer	Nov. 1–Nov. 6	G1
	Antlered deer only	Nov. 7–Nov. 11	
	Any deer	Nov. 1–Nov. 11	L, M
Firearm	Any deer	Nov. 12	A
	Antlered deer only	Nov. 13–Nov. 30	
	Any deer	Nov. 12	B, C1, C2, D1
	Antlered deer only	Nov. 13–Dec. 7	
	Any deer	Nov. 12–Nov. 13	D2E, E, F, G2, I2
	Antlered deer only	Nov. 14–Dec. 7	
	Any deer	Nov. 12–Nov. 14	I1
	Antlered deer only	Nov. 15–Dec. 7	
	Any deer	Nov. 12–Nov. 15	J1, K
	Antlered deer only	Nov. 16–Dec. 7	
	Any deer	Nov. 12–Nov. 16	H1, H2, J2
	Antlered deer only	Nov. 17–Dec. 7	
	Any deer	Nov. 12–Nov. 17	D2W, G1
	Antlered deer only	Nov. 18–Dec. 7	
	Any deer	Nov. 12–Nov. 23	L, M
	Antlered deer only	Nov. 24–Dec. 7	
Special Permits	Antlerless deer only	3,500 Permittees in Unit L 4,000 Permittees in Unit M	
Youth Hunt	Any deer	Oct. 25–26	Statewide
Deer Baiting*	October 22–November 19		WMU A–L
	September 15–December 15		WMU M

Further restrictions apply. See baiting rules section on page 10. A full list of rules regarding baiting wildlife in NH can be found in the Fis 300 section of the NH Code of Administrative Rules or online at gencourt.state.nh.us/rules/state_agencies/fis.html.

DEFINITIONS

Antlered Deer: Deer with at least one antler three (3) inches long.

Any Deer: All deer regardless of sex or age.

2026 Firearms Opening Day
November 11, 2026



BUY | SELL | TRADE

SILENCER/SUPPRESSOR SPECIALISTS! WE MAKE IT EASY!

New Hampshire's Favorite Firearms Dealer!

Official NH Fish and Game License Agent
www.NHGUNSHOP.COM • 603.424.GUNS (4867)

STOP IN TODAY! - 280 Daniel Webster Highway Unit C, Merrimack, NH 03054



GEORGE REED
747 N. BIRCH HILL
BRANDON, VT
802-855-1134

WILDLIFEDESIGN1.COM

On-site lodging:
Damm House Inn
or our rustic
cabins

**Grass-fed
Bison & Elk
meat for sale**

New Hampshire's Yellowstone
A Premier Hunting, Fishing & Nature Preserve

Rivervail Ranch proudly manages over 1,000 acres of lush pasture, woodlands and hedge rows, providing a sanctuary for wildlife. Home to herds of bison, elk, and red stag along with pheasant and grouse.

Pheasant tower shooting at Rivervail Ranch offers a dynamic and exhilarating challenge that appeals to both novice and seasoned shooters. By reservation only. Groups, individuals and corporate outings welcomed!

DRIVEN SHOOTS • HUNTING • RECREATION
Visit our website for upcoming shoots, booking ground hunting or trout fly fishing, lodging or to plan a relaxing retreat to enjoy nature's splendor at Rivervail!

OPEN YEAR-ROUND!

8 Buffalo Farm Road, Errol, NH
rivervailranch.com
603-482-3633 • contact@rivervailranch.com

DEER HUNTING

Long Island and Governor's Island Deer Permits

These permits allow the taking of deer on Long and Governor's Islands, in Lake Winnepesaukee, respectively. Written landowner permission required on forms available at the Region 2 office in New Hampton or at Fish and Game headquarters in Concord. Many special restrictions. All ages. For more information, contact the Wildlife Division at 603-271-2461.

Deer Hunting Regulations

Hunting Hours: ½ hour before sunrise to ½ hour after sunset.

Deer must be registered online or at the closest open registration station within 24 hours. See page 28 for a listing of stations. Deer must be accompanied and registered by the person who took the deer.

Online registration will be unavailable during the first 2 days of muzzleloader season and first 3 days of firearms season and deer must be registered in-person at a registration station on these days.

Hunters registering deer will receive a confirmation number which must be written on

or kept with their hunting license. Deer may be quartered in the field but the head and hide must be packed out. A conservation officer may request to see the head and hide of any harvested deer within 48 hours of killing. It is unlawful to hunt deer with a rimfire firearm. No shotgun ammunition, other than slugs or 00 or larger buckshot, may be used to take deer. **Exception:** Buckshot is prohibited for taking deer in Auburn, Chester, Greenland, Newington, Portsmouth, and Stratham. It is not required to register a harvested deer before taking another.

WMU A

Both the archery and firearms deer seasons close one week earlier than the rest of the state.

Archery Season

Any deer may be taken on the regular archery deer license during the archery season. **Crossbows may be used to take deer during the regular archery season in WMUs D2W, G1, G2, H1, H2, I1, I2, J1, J2, K, L, and M.**

Archers and crossbow hunters must have their name and address on arrows or bolts. Fixed blade broadheads cannot be less than 7/8 inches wide and not more than 1½ inches wide. Retractable blade broadheads are permitted (cannot be less than 7/8 of an inch wide

when open). Minimum draw weight for deer is 40 lbs.

Bowhunters may legally carry a sidearm, but may not use the sidearm to assist in taking a deer.

Crossbows

A crossbow means a device consisting of a rigid stock that permits only a single horizontally mounted bow with transverse limbs, a single string to be fully drawn, loaded with one bolt, maintained indefinitely in a firing position, and mechanically released. No crossbow fitted with 2 or more bows, limbs, or strings, or which permit 2 or more bolts to be released without recocking shall be permitted for the purpose of a take. A bolt means a short projectile for a crossbow that resembles an arrow.

A crossbow shall have a minimum pull of 125 pounds, a working mechanical safety and a total length no less than 25 inches. Name and address must be plainly marked on crossbow bolts. Allowable sizes of broadheads are outlined in the Archery Season section above. (See page 7 for regulations)

Muzzleloader Season

To hunt deer during the muzzleloader season, a person needs a Regular N.H. Hunting License, plus a Muzzleloader License. A muzzleloader

Trophy Deer Program

This program recognizes hunters in three categories—archery, firearm and muzzleloader—who take whitetails weighing 200 lbs. or more.

Rules:

1. All hunters are eligible.
2. Only deer weighing 200 lbs. or more, and taken in New Hampshire by legal means during the open season, are eligible.
3. All entries must be on official entry blanks provided in this book, or by the NH Antler and Skull Trophy Club (NHASTC).
4. Weights must be witnessed by the station operator or a Fish and Game employee.
5. All weights must be for field-dressed deer. A field-dressed animal is one which has all organs of the chest and abdominal cavities removed (including heart, lungs, intestines, etc.). The animal must be weighed intact. A deer must weigh at least 200 lbs. to qualify.
6. The NH Antler and Skull Trophy Club coordinates this program. They reserve the right to question any witnesses, to examine the scales used for weighing any entry and to refuse any questionable application.
7. Winners will be notified by mail following the deer season.
8. Please supply a photo for inclusion in the next record book. Photo can be emailed to NHASTC at rblaisdel11@comcast.net.
9. Any hunter under the age of 18 wishing to have their name published must include a parent/guardian name and signature on this form.

Use the Trophy Deer Entry Form, at right.

Current New Hampshire Records Are:

Archery: 255 lbs.; Belknap County—2007
Muzzleloader: 277 lbs.; Coos County—1998
Firearm: 289.25 lbs.; Coos County—1985

TROPHY DEER ENTRY FORM

I hereby swear that the following statements are true, that in taking this deer I complied with all legal requirements, and that the witness hereto actually observed the weighing of this deer.

Hunter's Name (print) _____

Street _____

City _____ State _____ Zip _____

Tel. _____

Scale Location _____

Weight _____ lbs. Antler points _____

Method: ☐ bow & arrow ☐ muzzleloader ☐ firearm

Registration Station _____

Date taken _____

Town of kill _____

Hunter's signature _____

Parent/Guardian Name (print) _____

Parent/Guardian Signature _____

I hereby swear that I witnessed the weighing of the deer described above, and verify the weight and other information given.

Witness signature _____

Submit this application no later than December 31 to:

Trophy Deer Program, NH Antler and Skull Trophy Club, 22 Scribner Rd., Raymond, NH 03077. Tel. (603) 895-9947.

All entries will be published in the club's bi-annual trophy book. If you desire a patch, please include \$15.00 with your application. Make checks payable to: NHASTC.

is defined as a single barrel, single shot firearm (40 caliber or greater) that requires that the projectile be loaded from the muzzle. Only one deer may be taken using a muzzleloader, cross-bow, or bow and arrow with the firearm tag during the muzzleloader season. No separate muzzleloader tag is issued. In NH a muzzle-loader is defined as a firearm—therefore a felon may not possess a muzzleloader.

Deer Baiting Season

See page 10 for regulations, page 18 for the season.

Antlered/Any Deer—Definitions

- **Antlered Deer:** Deer with at least one antler three (3) or more inches long.
- **Any Deer:** All deer regardless of sex or age.

Did you know?

It is unlawful to pick up any wildlife killed by motor vehicle without authorization from local or state police or N.H. Fish and Game.

Bear Brook Refuge

Deer may be hunted in the Bear Brook Refuge with bow and arrow only by persons holding a valid Archery License.

Great Bay National Wildlife Refuge

Deer hunting opportunity is allowed on the Great Bay National Wildlife Refuge. Hunters must obtain a special permit through the US Fish and Wildlife Service and possess any appropriate NH hunting licenses and tags to participate. For more information, go to fws.gov/refuge/great-bay/visit-us/activities/hunting or contact the Parker River National Wildlife Refuge, 6 Plum Island Turnpike, Newburyport, MA 01950, or call (978) 465-5753.

It Is Unlawful to:

- Hunt deer with a .22 or smaller rimfire firearm, or with shot loads smaller than 00 buckshot.
- Kill any deer with antlers less than 3 inches during the Antlered Only deer season.
- Use 100% salt products as bait for deer hunting.

- Have more than 6 people participate in a joint drive for deer.
- Hunt deer in the waters of any lake or pond
- Hunt deer on Long Island in Moultonborough or Governor's Island in Gilford, except with the appropriate special permits (see p. 20).
- Leave a deer in the woods without notifying a Conservation Officer within 12 hours as to the location and reason for not removing the deer.
- Buy, sell or offer for sale a deer or any part thereof, other than the head, hide or feet.
- Possess a deer that hasn't been properly tagged.
- Hunt with a detached deer tag. Upon killing a deer, the tag shall be immediately detached, filled out and attached to the deer.
- Assist another in taking a deer after you have taken one, unless you possess a valid unused tag or are accompanying a youth under 16 years of age, or someone with an apprentice license.
- Hunt deer with an air rifle that does not meet the criteria listed on page 10.

Keeping New Hampshire Deer Safe from CWD

Chronic Wasting Disease (CWD) is a wildlife disease related to BSE or "mad cow" disease and scrapie in sheep. It is fatal to deer, moose, and other cervids, such as elk. Based on the results of Fish and Game Department CWD monitoring efforts in which nearly 9,000 deer have been tested since 2002, CWD does not currently exist in New Hampshire. Activities that artificially concentrate deer greatly increase the spread of the disease and make control much more difficult. **Please do not feed deer—ever.**

The Centers for Disease Control and Prevention states that, "To date, there have been no reported cases of CWD infection in people. However, some animal studies suggest CWD poses a risk to certain types of non-human primates, like monkeys, that eat meat from CWD-infected animals or come in contact with brain or body fluids from infected deer or elk. These studies raise concerns that there may also be a risk to people." We recommend the following common-sense measures to prevent possible exposure to all wildlife diseases: 1) wear rubber gloves when field dressing your game, 2) bone out the meat from your animal, 3) wash your hands, knives, etc. when done, and 4) avoid eating brain, spinal cord, eyes, spleen, tonsils, and lymph nodes of harvested animals.

The importation of hunter-killed carcasses of any member of the deer family (Cervidae) including white-tailed deer, black-tailed mule deer, moose or elk from CWD-positive jurisdictions is prohibited except for: de-boned meat; antlers; antlers attached to skull caps from which all soft tissue has been removed; upper canine teeth clean of all soft tissue; hides or capes with no part of the head attached; and taxidermy mounts. CWD-positive states currently include: Alabama, Arkansas, California, Colorado, Florida, Georgia, Idaho, Illinois, Indiana, Iowa, Kansas, Kentucky, Louisiana, Maryland, Michigan, Minnesota, Mississippi, Missouri, Montana, Nebraska, New Mexico, New York, North Carolina, North Dakota, Ohio, Oklahoma, Pennsylvania, South Dakota, Tennessee, Texas, Utah, Virginia, Washington, West Virginia, Wisconsin and Wyoming. Additionally, the following Canadian provinces are CWD-positive: Alberta, British Columbia, Manitoba, Quebec, and Saskatchewan. It is possible for new CWD-positive jurisdictions to be added following publication of this digest. For the most up-to-date list, visit <https://www.wildlife.nh.gov/wildlife-and-habitat/wildlife-related-diseases/deer-diseases> or call (603) 271-2461.

THIS IS NOT A LICENSE

SPECIAL DEER and/or BEAR TAG

This tag is to be used only by the persons listed below and for the species specified. All others must use the tag attached to their hunting, archery, or bear licenses. This is not an additional tag for either species.

- ☐ **Resident landowner (w/out firearm license): firearm deer only**
- ☐ **Youth (under age 16): firearm and/or archery deer only**
- ☐ **Milestone Permanent license holder (license # starts with 68-): firearm and/or archery deer only**
- ☐ **Lifetime license holder (over age 16): firearm and/or archery deer; and/or one bear**
- ☐ **Paraplegic license holder: firearm deer only**
- ☐ **Disabled Veteran license holder: firearm and/or archery deer only**

Name: _____

LAST FIRST MI

Address: _____

STREET

TOWN STATE ZIP

Signature of hunter: _____

Date of kill: _____ Wildlife Management

Time of kill: _____ Unit: _____

Detach this page to use this tag. Attach immediately upon killing and register online or at the closest open registration station within 24 hours for deer. For bear, exhibit the bear or required parts to a Conservation Officer, Fish and Game personnel, or registration station for tagging within 24 hours. If registering with a Conservation Officer, call 603-271-3361 between 7 a.m. and 7 p.m. to arrange a time for registration.

Deer hunting is allowed only by bow and arrow, crossbow, shotgun, air rifle, muzzleloading rifle, rifles chambered in straight-walled pistol cartridges of .357 caliber or greater, and handguns chambered in .327 Federal Magnum and any caliber .357 Magnum and greater. Handguns used for taking deer under this section

* Air rifles may be used to take deer, bear, and moose (permit required) provided they are charged from an external high-compression power source and are 0.35 caliber or larger and produce at least 400 foot-pounds of energy at the muzzle for deer and bear and 0.45 caliber or larger for moose.

Hillsborough: Amherst; Bedford; Brookline; Goffstown; Hollis; Hudson; Litchfield; Manchester; Merrimack; Milford; Nashua; Pelham.

Merrimack: Concord; Hooksett: that part lying from the town line of Allentown, on the westerly side of Route 3, to a point where the old Portsmouth Railroad crosses the highway, then south of the railroad to the town line of Candia; Pembroke: that part lying southwesterly of the following line: starting at the Concord town line at Red Bridge on Rte. 106, south to Burrough (Borough) Road, then easterly on Burrough (Borough) Road to Fourth Range Road, then southerly on Fourth Range Road to Dudley Hill Road, south on Dudley Hill Road to Buck Street, northeast on Buck Street to Route 28, south on Route 28 to the Allentown town line. (See Bow. below.)

Rockingham: Atkinson; Auburn*; Brentwood; Chester*; Danville; Derry; East Kingston; Exeter; Fremont; Greenland*; Hampstead; Hampton; Hampton Falls; Kensington; Kingston; Londonderry; New Castle; Newfields; Newington*; Newmarket; Newton; North Hampton; Plaistow; Portsmouth*; Rye; Salem; Sandown; Seabrook; South Hampton; Stratham*; Windham.

Strafford: Durham; Madbury; Lee; Dover; Rollinsford; Somersworth.

* Buckshot prohibited for taking deer in these towns (RSA 208:3-a.b.c).

Bow: All hunting is forbidden in the following area with any firearm other than a shotgun, muzzleloading rifle, bow and arrow, or crossbow: southeast from the Concord-Bow boundary line along the west bank of the Merrimack River, then westerly along the Bow-Hooksett boundary line, then northerly along I-93, then westerly along Robinson Road, then northwest along Branch Londonderry Turnpike East, then southerly along Woodhill Road, then southwest along Dunbarton Center Road to the Bow-Dunbarton boundary line, then northwest along the Bow-Dunbarton boundary line to the Bow-Hopkinton boundary line, then easterly along the Bow-Hopkinton boundary line to the Bow-Concord boundary line, then southeasterly and easterly along the Bow-Concord boundary line to the west bank of the Merrimack River.

***MAKE YOUR OWN WILD GAME
SUMMER SAUSAGE AND SALAMI.***

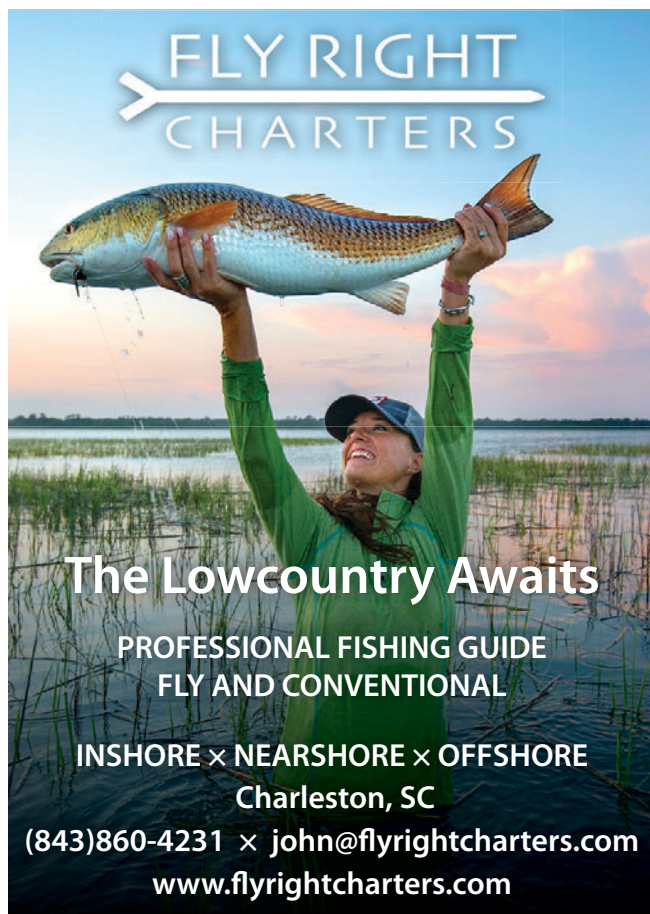
**WE HAVE EVERYTHING YOU NEED TO PROCESS
YOUR MEAT INTO DELICIOUS SAUSAGE
RIGHT IN YOUR OWN HOME.**



COMPLETE KITS STARTING AT \$13.95

B Butcher & Packer Supply
P.O. Box 71748
Madison Heights, Michigan 48071

Call 1-800-521-3188
www.butcher-packer.com

A woman in a green long-sleeved shirt and a blue baseball cap is standing in a marshy area, holding up a large fish with both hands. The fish is a large snook or similar species, with a silvery body and a reddish-brown head and tail. The background shows a body of water and a sunset sky with orange and pink clouds. The text 'FLY RIGHT CHARTERS' is at the top, with a stylized arrow pointing right. Below that, the text 'The Lowcountry Awaits' is written in a large, white, serif font. Underneath that, 'PROFESSIONAL FISHING GUIDE' and 'FLY AND CONVENTIONAL' are written in a smaller, white, sans-serif font. Further down, 'INSHORE x NEARSHORE x OFFSHORE' and 'Charleston, SC' are written in a white, sans-serif font. At the bottom, the phone number '(843)860-4231' and the email 'john@flyrightcharters.com' are written in a white, sans-serif font, followed by the website 'www.flyrightcharters.com' in a white, sans-serif font.

FLY RIGHT
CHARTERS

The Lowcountry Awaits

PROFESSIONAL FISHING GUIDE
FLY AND CONVENTIONAL

INSHORE x NEARSHORE x OFFSHORE
Charleston, SC

(843)860-4231 x john@flyrightcharters.com
www.flyrightcharters.com

A map of New Hampshire with towns and counties outlined. Areas shaded in orange indicate where rifles are prohibited. These areas include Meredith Neck, Laconia, Concord, Bow, Hooksett, Goffstown, Bedford, Amherst, Merrimack, Milford, Brookline, Hollis, Nashua, Pelham, Windham, Derry, Hampstead, Atkinson, Plaistow, Salem, Danville, Sandown, Chester, Auburn, Exeter, Brentwood, Newmarket, Newfields, Lee, Durham, Dover, Somersworth, Rollinsford, Madbury, Greenland, Ryer, North Hampton, Kensington, East Kingston, South Hampton, Seabrook, and Hampton Falls. Major highways are marked with shields: 93, 3, 89, 4, 202, 101, 293, 1, and 9. A legend in the top right corner shows an orange square labeled 'RIFLES PROHIBITED'.

»»» HELP OUR HERD



Terry Kreeger, Wyoming Game and Fish and Chronic Wasting Disease Alliance

Don't Use Urine-Based Lures

Natural urine-based lures have the potential to spread Chronic Wasting Disease (CWD). A number of studies have shown the infective protein that causes CWD is present in urine, feces, and saliva of infected animals. Urine for lures is collected from deer in captive facilities held in pens over grates which collect a mixture of urine, feces, and saliva. Many of these facilities are located in states where CWD is already present. These lures do not undergo any treatment that might inactivate or kill disease-causing agents, and there is currently no USDA-approved testing of commercial lures for the presence of CWD proteins.

The infective protein can persist in the environment for years as a source of possible infection to the state's deer and moose herds. Several states and Canadian provinces have already banned the use and possession of natural urine-based lures due to the potential risks. N.H. Fish and Game recommends using one of many effective synthetic lures on the market, which do not pose a risk of spreading disease to our deer and moose populations. For more information, visit wildnh.com/deer-diseases.



YOUR AD HERE

Showcase your business and reach more active outdoor enthusiasts than ever before!

- ☒ Increase customer reach.
- ☒ Build customer awareness of your business and brand.
- ☒ Promote the benefits of your products or services.
- ☒ Communicate information about your business.
- ☒ Increase sales and demand.

Learn more about our many print and digital advertising opportunities!

(413) 884-1001

LOWLANDS WHITETAILS Hunting Ranch



8961 Number Three Road
Lowville, NY 13367

*Maybe your dream is to have a
200+ Class B&C buck hanging on your wall...*

*or is your dream to watch your child take a
trophy buck you can both be proud of...*

*Please call us with your dream and let us make it a reality!
We have big-bodied bucks ranging up to and over 250 B&C!*

**Muzzleloader, Rifle or Archery • No License Required
Lodging is Free While You Hunt**

315-286-5528 | 315-286-2861 | 315-376-2190

LowlandsWhitetails.com

Email lowlandswhitetails@yahoo.com

SMALL GAME HUNTING

Small Game species in New Hampshire are: ruffed grouse, pheasant, quail, Hungarian/European partridge, chukar, cottontail rabbit, snowshoe hare, gray squirrel, and migratory game birds including waterfowl (see page 30).

To hunt for small game, a resident must have a current Regular N.H. Hunting, Combination, or Archery License. A nonresident must have a Regular N.H. Hunting, Combination or Archery License or a Small Game License. **Note: Turkey is considered large game.**

No license is required for youth hunters (under age 16) of small game. Youth must be accompanied by a properly licensed adult age 18 or older.

Migratory bird hunters, see pages 30–31 for additional requirements.

Small Game Hunting Hours

Hunting Hours: ½ hour before sunrise to ½ hour after sunset, except for migratory birds (see page 30).

Air Rifles and Crossbows

Air rifles of not less than .22 caliber and producing not less than 12 foot-pounds of kinetic energy at the muzzle are legal for the taking of small game except migratory waterfowl. Subject to all other restrictions shown here. Crossbows are a legal method of take for small game.

No person shall take squirrels within a compact zone of any village or city or within the limits of any public park or cemetery.

Pheasant Hunting

N.H. Fish and Game will stock approximately 10,000 pheasants at 60+ sites around the state.

All pheasant hunters 16 years of age or older must have a valid Regular N.H. Hunting, Combination, or Nonresident Small Game License, in addition to a Pheasant License.

Ruffed Grouse Hunting

N.H. Fish and Game actively manages our lands to create young forests, one of the habitats critical for grouse and many other species. If you are a grouse hunter, we ask you to help monitor this species by participating in our Ruffed Grouse Wing and Tail Survey. Read on and you can learn all about it!

Ruffed Grouse Wing and Tail Survey

NHFG conducts an annual grouse wing and tail survey to help gain critical information about ruffed grouse in NH. Hunter participation is key to this effort! A participating hunter wins a firearm donated by the Ruffed Grouse Society.

Any grouse hunter can pick up grouse sample packets, which include envelopes and survey cards for two grouse samples, from participating locations listed at huntnh.com.

Chance to win a firearm donated by the Ruffed Grouse Society!

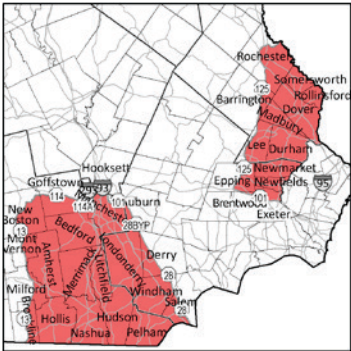
2025-2026 SMALL GAME HUNTING SEASONS



SPECIES	INCLUSIVE DATES	WILDLIFE MANAGEMENT UNITS	DAILY LIMIT	SEASON LIMIT
Cottontail Rabbit Hunting and/or Falconry	Oct. 1, 2025–March 15, 2026	H2, K, L, M (except for closed areas, see map below)	4	No
Gray Squirrel	Sept. 1, 2025–Jan. 31, 2026	All	5	No
Youth Pheasant**	Sept. 27–28	All	2	10
Pheasant*	Oct. 1–Dec. 31	All	2	10
Due to safety concerns, the pheasant season will be closed statewide until 2:00 PM on in-season stocking days. These closures will occur on Thursdays and Fridays, October 2-3, 9-10, 16-17.				
Ruffed Grouse (Partridge)	Oct. 1–Dec. 31	All	4	No
Quail, Chukar, Hungarian/European Partridge	Oct. 1–Dec. 31	All	4	No
Snowshoe Hare	Oct. 1, 2025–Mar. 1, 2026	A, B, C1, C2, D1, D2, E, F, G, J1	3	No
		H1, H2, I1, I2, J2, K, L, M	2	

* Pheasant License required.
** Youth Pheasant do not require pheasant license. Accompanying adult does need license.

Shaded Areas Closed to Cottontail Rabbit Hunting



The areas indicated above are known locations of New England cottontail rabbits (endangered in New Hampshire), and are closed to hunting of all cottontail rabbits.

Participate in the Small Game Survey

Calling all N.H. small game hunters! Please fill out and submit your Small Game Survey form and you'll have a chance to win a firearm generously donated by Sturm Ruger & Co., Inc.

If you are a small game hunter and would like to volunteer to take our annual survey, please call (603) 271-2461 or email wildlife@wildlife.nh.gov. NOTE: Please provide your full name and mailing address so we can mail the survey to you. Forms are also available at huntnh.com/small-game-survey

You could win a Ruger firearm!

HUNT WITH AN APPRENTICE!



Know someone who really wants to try hunting but hasn't taken a Hunter Education class yet? Now they can be an Apprentice Hunter!

New Hampshire offers an Apprentice Hunting License to anyone who wishes to hunt, but who has not yet completed a Hunter Education program or is not able to provide proof of a previous hunting or archery license.

The NH Apprentice Hunting License allows a friend, family member, or co-worker to hunt, for one year only, when accompanied by a properly licensed person who is 18 years of age or older. The fees for the Apprentice Hunting License are the same as for a resident or nonresident Regular Hunting License, Archery

License, or nonresident Small Game Hunting License.

The apprentice hunter must purchase any other permits or licenses required for hunting (such as turkey, pheasant, muzzleloader, etc.). The properly licensed person accompanying the apprentice is fully accountable for any damage incurred or for any violations that may be committed by the apprentice while hunting. So, it's a big responsibility, but you may end up creating a hunter and a future hunting buddy for yourself.

Have fun, be safe, and good hunting!

Apprentice Basics

The Apprentice Hunting License is not valid to take moose, doesn't apply to the 3-day nonresident small game license, and cannot be used as proof of a previous license when purchasing a hunting license in the future.

An Apprentice Hunting License may be purchased only once in the lifetime of the hunter. It is available only through Fish and Game headquarters in Concord.

Visit huntnh.com.



Bear Hunting

Hunters are asked to refrain from shooting females with cubs. Females and cubs remain together as a family unit for approximately 18 months, and events that interrupt that process can have negative effects. The survivability of orphaned cubs is highly variable and is influenced by cub size, condition and the availability of natural foods. These family groups are recognized during fall by the female leading cubs that are within immediate proximity. Being more conservative in your harvest may significantly decrease cub orphaning and will help safeguard both bears and bear hunting in the future.

Hunters are encouraged to visit huntnh.com for more information on proper bear hunting techniques.

TURKEY HUNTING

Wild turkeys in New Hampshire are a wildlife restoration success story. The state now offers generous spring and fall turkey hunting opportunities, as well as a special youth hunt. The highest concentration of turkeys is in the Connecticut River Valley—though they are well distributed throughout the state, and their clucks, purrs, and gobbles may be heard just about anywhere!

Turkey Hunting Licensing Requirements

Adult hunters (16 or older) must have a Regular N.H. Hunting, Combination, or Archery License and a Turkey License to hunt turkeys. **A Small Game License does not allow** for the hunting of turkeys. Youth hunters (under 16 years of age) do not need a Hunting, Combination, or Archery license, but they do need a turkey license. Each Turkey License comes with 2 tags which may be used in any order and allow the take of two (2) turkeys per year. Turkey hunters may take one (1) bearded or male turkey during the spring season and a second turkey of either sex during the fall. Or, hunters may take two (2) male or bearded turkeys during the spring season. **However, the first spring turkey shall be legally registered before the second spring turkey can be taken.** One of the spring turkeys may be taken statewide, but **the other spring turkey shall only be taken in WMUs H1, H2, J2, K, L, or M.** A hunter may not take two (2) spring birds in WMU's A-G, I2, or J1. One (1) or two (2) turkeys may also be taken during the youth weekend, however all spring season registration and WMU regulations apply. The total fall season bag limit is one (1) turkey and hunting may be done statewide with bow and arrow or a crossbow during the archery season, or with a shotgun or crossbow during the fall shotgun season in those units where allowed (see season chart and map).

Turkey Hunting Regulations

Hunting Hours:

- **Fall:** ½ hour before sunrise to ½ hour after sunset.
- **Spring:** ½ hour before sunrise to 12 noon.

Turkeys must be tagged immediately upon killing. Registration of a fully feathered intact carcass is required online or at the closest open registration station within 24 hours. The turkey may be gutted. See page 28 for a list of Turkey Registration Stations. Hunters registering turkey will receive a confirmation number which must be written on or kept with their hunting license.

- Shotguns, with the following shot and loads:
- between 10 and 20 gauge inclusively, with shot size of #4 and smaller, in hunting rather than target loads; or
 - 28 gauge and .410, with shot sizes #7 through #9.5, a minimum shot density of 18 grams per cubic centimeter (G/CC), and a minimum barrel length of 18 inches

TURKEY HUNTING SEASONS

SEASON	INCLUSIVE DATES	WILDLIFE MANAGEMENT UNITS	SEASON LIMIT
Fall Archery	Sept. 15–Dec. 8, 2025	A	Combined limit: 1 turkey (either sex)
	Sept. 15–Dec. 15, 2025	B–M	
Fall Shotgun	Oct. 13–19, 2025	D2, H1, H2, I1, J2, K, L, M	
Spring	May 1–May 31, 2026	One Turkey — Statewide Other Turkey — WMUs H1, H2, J2, K, L or M	Combined limit: 1 or 2 (male or bearded)
Youth Hunt	April 25–26, 2026	One Turkey — Statewide Other Turkey — WMUs H1, H2, J2, K, L or M	Combined limit: 1 or 2 (male or bearded)



Gobbler



Hen

HEN OR GOBBLER?

Feature	Gobbler	Hen
Head	red, blue and white colors	blue-gray color
Body	black	light, rusty-brown
Beard	long bristle-like beard	usually no beard
Spurs	usually ½-inch or longer spurs	no spurs
Calls	gobble, drum	yelp, cluck, cut
Strut	strut with tail fan and wing droop	no strut
Size	larger than hen	½ to ¾ size of gobbler

A person who has taken a turkey may assist another properly licensed turkey hunter by calling only. The person assisting by calling shall not possess a bow and arrow, crossbow or firearm (other than a pistol or revolver).

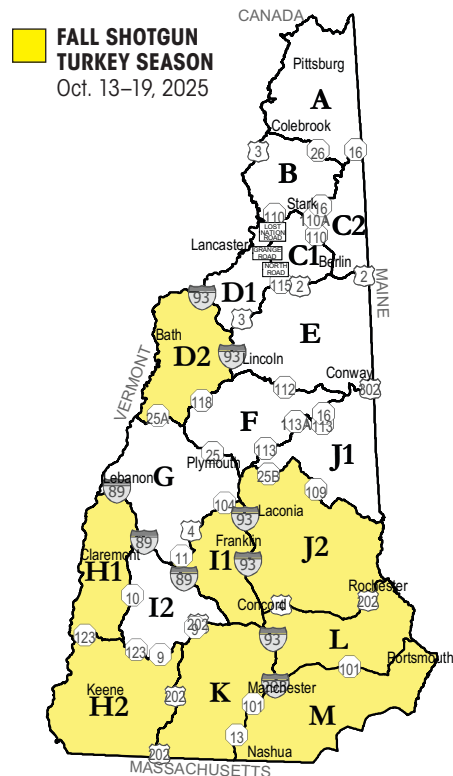
Archery/Crossbows

Turkey may be taken with Archery or Crossbow during both spring and fall season. Hunters must have their name and address on arrows or bolts. Fixed blade broadheads cannot be less than 7/8 inches wide; there is no upper size limit. Retractable blade broadheads are permitted (cannot be less than 7/8 of an inch wide when open). Minimum bow and arrow draw weight for turkeys is 30 lbs. Crossbows must meet the requirements on page 20, and are allowed as described on page 7.

It Is Unlawful to:

- Possess a turkey that hasn't been properly tagged. Upon killing a turkey the tag shall be filled out and immediately attached to the turkey.
- Take a turkey with a rifle, dogs (during spring season), bait, electronic calling devices, live decoys, by cooperative drives or with an air rifle.
- Take a turkey while the turkey is in a tree.
- Take a turkey by reaping or fanning. Reaping is defined as the practice of stalking or approaching a turkey while holding, wearing, or using a real or artificial turkey fan as camouflage. Fanning is defined as the

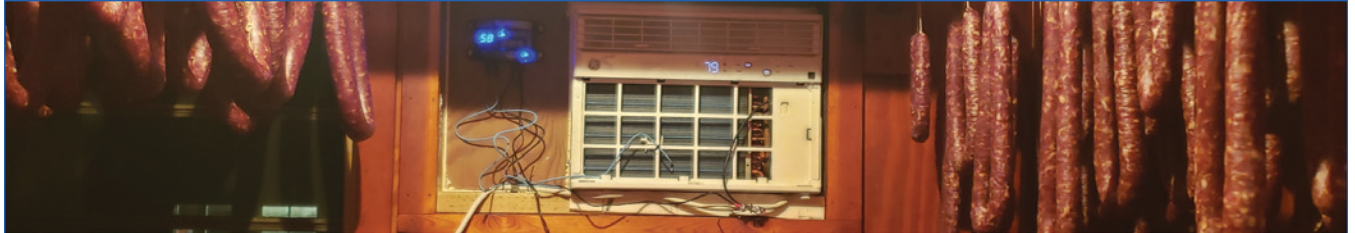
practice of staying in a stationary position while holding, wearing, or using a real or artificial turkey fan as camouflage to entice a turkey to approach the hunters' position.





REAL TRAINING FULL BENEFITS

1-800-GO-GUARD ★ NATIONALGUARD.COM/NH



BUILD YOUR OWN GAME OR MEAT COOLER

- Save \$1,000s by building your own walk-in cooler
- Cool a well insulated room down to 34 degrees with a CoolBot and window air conditioner
- Perfect for meat curing and aging
- Over 100,000 units sold in 70 different countries

Go to eregulations.com/coolbot to save \$20 on your order!

DEER/TURKEY REGISTRATION STATIONS

Note: Deer must be registered in-person at a deer registration station during the first 2 days of muzzleloader and first 3 days of firearms season.

Registration stations are subject to change. Please check huntnh.com for an updated list and street addresses for check stations. Harvested species requiring a registration cannot leave the state until they have been properly registered by the hunter.

TOWN / CITY	LOCATION	PHONE (603)	DEER / TURKEY	DEER SCALES?
BELKNAP COUNTY				
Belmont	Belmont Hardware	267-8510	D/T	Y
Ctr Barnstead	White Buffalo Trading Post	269-3378	D/T	Y
Meredith	Fish Tails Bait And Tackle	279-3152	D/T	N
CARROLL COUNTY				
Conway	USFS Saco Ranger Station	447-5448	D/T	N
Ossipee	Aubuchon Hardware	539-6513	D/T	Y
Sanbornville	Longmeadow Farm & Home Supply	522-3604	D/T	Y
CHESHIRE COUNTY				
Walpole	Drewsville General Store	803-1403	D/T	Y
Winchester	Trader John's Gun Shop	239-4032	D/T	Y
COOS COUNTY				
Carroll	Yaya's Market And Deli	846-5900	D/T	Y
Colebrook	Ducrets Sporting Goods	237-4900	D/T	Y
Errol	LL Cote	482-7777	D/T	Y
Gorham	Robert Gargano	781-249-1986	D	N
Jefferson	Old Corner Store	586-7722	D	Y
Milan	Ray's Corner Country Store LLC	449-2236	D/T	Y
Northumberland	DK-N-Sons Auto Repair	636-0044	D/T	Y
Northumberland	Johns Archery Shop	636-6140	D	Y
Pittsburg	Young's General Store	538-6616	D/T	Y
Whitefield	Lufkin's Service Center	837-2088	D/T	N
GRAFTON COUNTY				
Bath	Swiftwater Way Station	747-2929	D/T	Y
Bristol	Newfound Sales Inc	744-8658	D/T	Y
Enfield	Proctor's General Store	632-4638	D/T	Y
Lisbon	Du-Ez In & Out	838-5581	D/T	Y
Littleton	Corey's Sport Shop Inc	444-6261	D	N
Lyme	Lyme Country Store	795-2213	D/T	Y
North Haverhill	Patten's Sporting Goods	787-6964	D	N
Piermont	4 Corners General Store	272-9016	D/T	Y
Wentworth	Shawnees General Store LLC	764-5553	D/T	Y
HILLSBOROUGH COUNTY				
Bedford	NHDOT Patrol Shed 511 - Only Open Nov 1, 2, 12, 13, & 14 - 8am-5pm)		D	Y
Greenfield	Delays Harvester Market	547-3414	D/T	N
Greenville	Old Glory Guns & Ammo	878-2854	D/T	Y
Hillsborough	Morse Sporting Goods	464-3444	D/T	Y
Weare	Country 3 Corners	529-7539	D/T	N
MERRIMACK COUNTY				
Danbury	Smith River Trading Post	768-3413	D/T	Y
Pittsfield	Arts Ammo And Firearms	765-2941	D/T	Y
Salisbury	Barn Store Of New England LLC	648-2888	D/T	Y

TOWN / CITY	LOCATION	PHONE (603)	DEER / TURKEY	DEER SCALES?
ROCKINGHAM COUNTY				
E Kingston	East Kingston Market	642-3311	D	Y
No Hampton	Joe's Meat Shoppe	964-6152	D	N
Raymond	Radio Grove Hardware	895-2233	D/T	Y
Windham	D J Rogers Collision Center	898-9750	D	N
STRAFFORD COUNTY				
Alton Bay	Berry's Bait	875-0169	D/T	Y
Barrington	Renaissance Firearms	994-4867	D	Y
Dover	White Birch Armory	330-0146	D/T	Y
Madbury	Taylor's Trading Post	742-5931	D/T	Y
SULLIVAN COUNTY				
Claremont	Claremont Fire Dept	542-5156	D	Y
Meriden	Meriden Deli Mart Inc	469-3222	D/T	Y
Newport	Newport Fire Station	863-1416	D	N

HELP FIGHT POACHING



SEND ANONYMOUS TIPS TO NH OPERATION GAME THIEF

ANONYMOUS

Hello, I found a bait pile out of season on Smith Road. See attached photo and coordinates.

ADMIN

Thank you for this tip, a CO will look into this bait pile.

REPORT POACHING NOW THROUGH JANUARY 1, 2026 - NEW REPORTING APP COMING SOON

This is a non-emergency service being provided to the public to report active and actual poaching violations. You should always call 9-1-1 for any life threatening emergency. For nuisance wildlife, law questions, or OHRV complaints please call 603-271-3361.

Hunt for the Hungry

Hunt for the Hungry, a cooperative program of the New Hampshire Food Bank in Manchester and N.H. Fish and Game, enables you to donate part or all of your kill to help feed the hungry in our communities. The N.H. Food Bank provides food to more than 400 agencies, food pantries, soup kitchens, homeless shelters, elderly services, and group homes. For information or to make a donation, call the N.H. Food Bank at (603) 669-9725.

Loss of Hunting Privileges

Anyone found guilty of violating any Fish and Game hunting regulation or trespass may lose his/her hunting privileges for a minimum of one year. A NH hunting license suspension could result in a hunting license suspension in other states.

New Hampshire's bear hunters can take advantage of three seasons: stalking ("general"), dog season, and baiting season. Bears are found statewide, with the highest densities in central N.H. and the White Mountains. Hunters can buy a Bear License online or at any license agent—no lottery needed.

Bear Hunting Licensing Requirements

Adult hunters (age 16 and older) must have a valid Regular N.H. Hunting, Combination, or Archery License, and a Bear License and valid tag to hunt black bear. Youth hunters (under 16 years of age) do not need a Regular N.H. Hunting, Combination or Archery License, but they do need a Bear License and valid tag. Hunters may take one bear statewide. An additional bear with the purchase of an additional bear license and tag may be taken in WMUs C1, D2, E, or F.

Bear Hunting Regulations

Hunting Hours: ½ hour before sunrise to ½ hour after sunset.

Successful hunters may report their harvest by exhibiting the bear, with reproductive organs attached, to a Conservation Officer, Fish and Game personnel or a specified registration station for tagging within 24 hours. If registering with a Conservation Officer. Notification can be made at www.wildlife.nh.gov/hunting-nh/bear-hunting-new-hampshire or call 603-271-3361 between 7 a.m. and 7 p.m. to arrange a time for registration. A current

list of Bear Registration Stations is available at www.wildlife.nh.gov/hunting-nh/bear-hunting-new-hampshire. Hunters may process bears before registration, but must present 1) the entire carcass, skinned or quartered, excluding viscera, 2) legs and feet, 3) intact skull, 4) hide, and 5) sex organs, including teats from females. Hunters may be required to take a Conservation Officer to the kill site.

Black bear may only be taken by firearms larger than .22 rimfire, shotgun loaded with a single ball, muzzleloader not less than .40 cal, bow and arrow, or crossbow and bolt, or air rifle (see page 10).

Archery/Crossbow

Archers and crossbow hunters must have their name and address on arrows and bolts. Fixed blade broadheads cannot be less than ⅞ inches wide and not more than 1½ inches wide. Retractable blade broadheads are permitted (Cannot be less than ⅞ of an inch wide when open). Minimum draw weight for hunting bear with bow and arrow is 40 lbs. Crossbows are a legal method of take for bear (page 7) and must meet the requirements on page 20.

To Bait Bear

To bait bear on private land, a Permit to Bait Wildlife and map of the bait site must be received by the Wildlife Division, N.H. Fish and Game (11 Hazen Drive, Concord, N.H. 03301) or be postmarked by the first Monday in August. No person except a licensed N.H. Hunting Guide shall place bait for the purpose of attracting

bear at more than 2 bait sites. Baiting permit applications are available at Fish and Game offices or online at huntnh.com. Bear baiting applications for state-owned and managed lands and the White Mountain National Forest shall be submitted to the Law Enforcement Division, N.H. Fish and Game Dept. (11 Hazen Drive, Concord, NH 03301) or be postmarked **between the first Monday in June and the first Monday in August**. Special baiting permit lottery rules apply to the Connecticut Lakes Headwaters Forest. No bait may be placed from April 15 to August 31 (dates inclusive). See additional baiting regulations on page 10.

To Hunt Bear with Dogs

A free Take Bear With Dogs Permit is mandatory for anyone attempting to take bear with hounds. Nonresidents from states or provinces or territories of Canada that allow the training of dogs for bear hunting or taking of bear with dogs, and who do not limit or prohibit N.H. residents from training dogs or hunting bear with N.H. dogs, are the only nonresidents allowed to bring dogs into N.H. to train dogs or take bears. Permits are available online at huntnh.com. The permit becomes effective when one copy is presented by hand or postmarked and mailed to the N.H. Fish and Game Department (Wildlife Division, 11 Hazen Drive, Concord, NH 03301) prior to taking a bear. Hunters who take a bear with the use of dogs must present this permit at the time of registration.

It is Unlawful to:

- Hunt bear with a .22 or smaller rimfire firearm, or a shotgun loaded with any ammunition other than a single ball;
- Buy, sell or offer for sale a bear or any part thereof, other than the head, hide, or feet;
- Possess a bear that hasn't been properly tagged;
- Upon killing a bear, the tag shall be immediately filled out and attached to the bear;
- Assist another in taking a bear after you have taken one, unless you possess a valid unused tag or are accompanying a youth under age 16 or someone with an apprentice license.
- Start hounds over bait.
- Shoot a bear that has been trapped or cornered by a dog and you are not a member of the hunting party.
- Hunt bear on any islands, or in the waters of any lake or pond in the state.
- Use telemetry equipment to locate hounds within 300 feet of a public way.
- Take an additional bear without registering the first.
- Hunt bear with an air rifle that does not meet the criteria listed on page 10.

Chocolate Banned as Bear Bait

No person shall establish, tend, or hunt over a bait containing chocolate or any cocoa derivative. White chocolate may be used.

2025 BEAR HUNTING SEASONS



SEASON	INCLUSIVE DATES	WILDLIFE MANAGEMENT UNITS
General Season	Sept. 1–Nov. 11	A, B, C2, D1, H1, I2
	Sept. 1–Nov. 30	C1, D2, E, F, G, I1, J1, J2, L, M, H2, K
Baiting Season	Sept. 1–Sept. 28	A, B, C2, D1, H1, H2, I2, K, L, M
	Sept. 1–Oct. 5	C1, D2, E, F, G, I1, J1, J2
Dog Season	Sept. 22–Nov. 11	A, B, C1, C2, D1, D2, E, F, G, H1, I1, I2, J1, J2
	Closed	H2, K, L, M

* Hunters may take one bear statewide. An additional bear with the purchase of an additional bear tag may be taken in WMUs C1, D2, E, or F. The first bear must be registered before taking an additional bear.

WATERFOWL/MIGRATORY BIRD HUNTING

Migratory bird hunting in New Hampshire includes woodcock, ducks and geese, snipe and crows. A special youth waterfowl season (September 27–28, 2025) allows hunters ages 15 and younger to hunt in advance of the regular season.

2025–2026 MIGRATORY BIRD HUNTING SEASONS

SPECIES	NORTHERN ZONE	INLAND & CT. RIVER ZONE	COASTAL ZONE	BAG LIMIT	POSSESSION LIMIT
Ducks ^A	Oct. 2–Nov. 30	Oct. 13–Nov. 11 Nov. 27–Dec. 26	Oct. 2–Oct. 8 Nov. 27–Jan. 18	6	18
Mergansers ^B	Dates same as ducks			5	15
Coots	Dates same as ducks			15	45
Sea Ducks ^C	Dates same as ducks			4	12
Canada Geese (Sept.)	Statewide Sept. 1–Sept. 25			5	
Canada Geese (Regular)	Dates same as ducks			2	6
Snow Geese	Dates same as ducks			25	NONE
Brant	Oct. 2–Oct. 31	Oct. 13–Nov. 11	Oct. 2–Oct. 8 Nov. 27–Dec. 19	1	3
Falconry	Dec. 1, 2025–Jan. 12, 2026	Nov. 12–Nov. 26 Dec. 27, 2025–Jan. 23, 2026	Jan. 27–Mar. 10, 2026	3	9
Woodcock	Statewide: Oct. 1–Nov. 14			3	9
Common Snipe	Statewide: Sept. 15–Nov. 14			8	24
Crow	Statewide: Aug. 15–Nov. 30, 2025, Mar. 16–Mar. 31, 2026			NONE	NONE
Youth Waterfowl Hunting Weekend	Statewide: September 27 & 28, 2025			Same as regular season	
Veteran & Active Military Weekend ^D	Statewide: January 24 & 25, 2026			Same as regular season	

A Includes all species of ducks, with the following restrictions: No more than 4 mallards (2 of which may be a hen), 2 black ducks, 3 wood ducks, 3 pintail, 2 canvasbacks, 2 red-heads, 1 scaup, and no more than 3 scoters, 3 long-tailed ducks, or 3 eiders (1 of which may be a hen). The harlequin duck season is closed. Possession limits are three times the daily bag limit (e.g. The mallard possession limit is 12, of which 6 may be hens).

B The daily bag limit of 5 mergansers is in addition to the daily bag limit of 6 ducks. Possession limits are three times the daily bag limit.

C Sea ducks are part of the general duck bag in all zones. The daily bag limit for sea ducks is 4 and the possession limit is 12. Sea duck species include: common eider, surf scoter, white-winged scoter, black scoter, long-tailed duck, bufflehead and common goldeneye.

D Veteran & Active Military Personnel: Veterans (as defined in section 101 of title 38, U.S. Code) and members of the Armed Forces on active duty, including members of the National Guard and Reserves on active duty (other than for training), may participate. All hunters must possess a Federal Duck Stamp. Proof of eligibility is required and must be carried on person while hunting. **These special waterfowl hunting days apply to hunters licensed in New Hampshire only. Hunters may hunt the Connecticut River Zone but must launch from New Hampshire.**

MIGRATORY BIRD HUNTING REQUIREMENTS

SPECIES	HIP PERMIT	FEDERAL STAMP	NON-TOXIC SHOT	FIREARM PLUG	NH MIGRATORY WATERFOWL LICENSE
Ducks	•	•	•	•	•
Mergansers	•	•	•	•	•
Coot	•	•	•	•	•
Canada Geese (Sept.)	•	•	•		•
Canada Geese (Regular)	•	•	•	•	•
Snow Geese	•	•	•	•	•
Brant	•	•	•	•	•
Sea Ducks	•	•	•	•	•
Falconry	•	•	•	•	•
Woodcock	•			•	
Common Snipe	•			•	
Crow					



WATERFOWL/MIGRATORY BIRD HUNTING

Migratory Bird Hunting Licensing Requirements

To hunt for migratory birds, a resident must have a current Regular N.H. Hunting, Combination, or Archery License. A nonresident must have a Regular N.H. Hunting, Combination, Archery or a Small Game License. No license is required for youth hunters (under age 16); youth must be accompanied by a properly licensed adult age 18 or older.

In addition, duck and goose hunters 16 and older must have a:

- State Migratory Waterfowl License;
- National Migratory Bird Harvest Information or "HIP" certification number to hunt ducks, geese, woodcock, and snipe.
- Federal Duck Stamp with the hunter's name signed across the face. The Federal Duck Stamp can be purchased at many U.S. Post Offices.

HIP applicants must call 1-800-207-6183 or go to the online licensing site at huntnh.com to obtain a HIP permit number at no cost.

Hunters pursuing snipe and woodcock do not need either the state migratory waterfowl license or the federal duck stamp, but they do need the HIP certification.

Youth Waterfowl Weekend

Hunters age 15 and younger have a special weekend (September 27–28, 2025) to hunt in advance of the season. They must be accompanied by an adult at least 18 years of age who possesses a current hunting license. The adult may not take waterfowl. Youth hunters may take waterfowl in accordance with the 2025–2026 NH migratory bird hunting regulations.

Migratory Bird Hunting Regulations

Hunting Hours:

- **Waterfowl, woodcock, snipe:** ½ hour before sunrise to sunset.

It is unlawful to hunt migratory game birds with an air rifle, a shotgun larger than 10 gauge or use a shotgun capable of holding more than 3 rounds of ammunition: one in the chamber, and the magazine must be plugged to hold no more than 2 rounds. It is illegal to possess any shotgun shells containing lead shot while hunting

migratory waterfowl (does not include woodcock or snipe). Bow and arrow may be used.

Placing bait or hunting over baited areas is prohibited. It is also unlawful to have a loaded firearm in a motorboat under power or hunt from a motorboat or sailboat until all forward motion has ceased. Per USFWS federal regulation, 50 CFR 20.91 (b), the sale of mounted migratory game birds is prohibited.

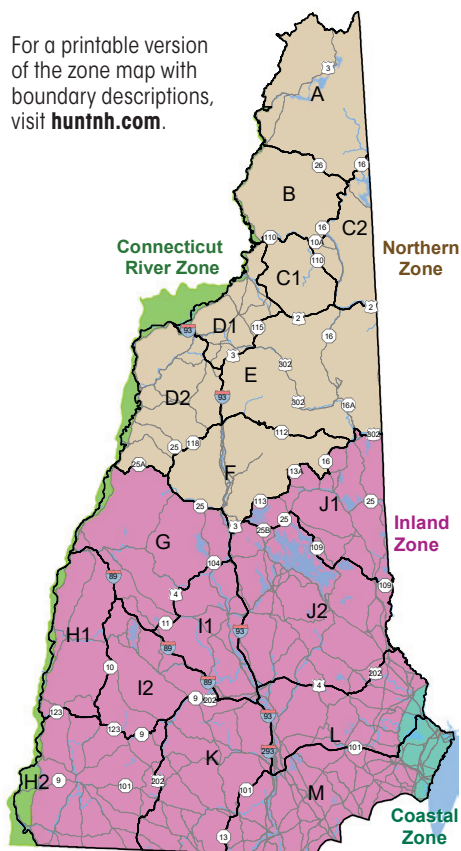
- **Crow:** ½ hour before sunrise to ½ hour after sunset. No HIP, state migratory license or federal duck stamp required for crow. Crows may be taken by firearms and bow and arrow. Electronic calls may be used for crow and during the special September goose season only.

In addition to state regulations, Federal rules apply to the taking, possession, shipping, transporting, and storing of migratory game birds. Each hunter should also consult Federal regulations, which may be found in Title 50, Code of Federal Regulations, Part 20. A link can be found at huntnh.com/waterfowl.

Areas Closed to Waterfowl Hunting

Certain areas are closed to waterfowl hunting. For a list and description of closed areas throughout the state, contact the Fish and Game office nearest you; or write to N.H. Fish and Game Department, 11 Hazen Drive, Concord, NH 03301; or visit huntnh.com/waterfowl.

For a printable version of the zone map with boundary descriptions, visit huntnh.com.



THE GUN DOG PARTNER YOU'VE BEEN HUNTING FOR

Enjoy your sport with an outstanding canine companion from out of the crate to bragging at the tailgate.



FOR ALL YOUR TRAINING AND BOARDING NEEDS

Gun Dog training for retrievers, flushing dogs, and pointers. Pre-season tune-ups and fitness training, live bird work, hunt test and field trial preparation for spaniels, pointers and retrievers. Boot camp training program for gun dogs, all-breed obedience and behavior problems. Private lessons are available.



265 N Society Rd, Canterbury, CT • 860-546-2116 • QKdogs.com

Make Hunting & Fishing Dreams Come True!


Hunt of a Lifetime is a nonprofit organization that grants hunting and fishing dreams to children, age 21 and under, who have been diagnosed with life threatening illnesses.



If you are interested in helping a child live their dream, please contact us for more information.

Toll Free 814.572.4387 HuntofaLifetime.org

FURBEARER HUNTING AND TRAPPING



2025-2026 FURBEARER HUNTING SEASONS

SPECIES	INCLUSIVE DATES	DAILY LIMIT	SEASON LIMIT
Coyote	No closed season; Night hunting allowed, Jan. 1–Mar. 31	No	No
Fisher	Dec. 1, 2025–Jan. 31, 2026	2*	2*
Fox (Red & Gray), Opossum, Skunk, Raccoon	Sept. 1, 2025–March 31, 2026	No	No
Mink, Muskrat, Weasel	Oct. 15, 2025–April 10, 2026 Nov. 1, 2025–April 10, 2026	WMUs A–F WMUs G–M	No
Bobcat, Lynx, Pine marten	CLOSED		

* The statewide daily and season bag limit is 2 fisher per hunter (combined with trapping).

Furbearer Hunting Licensing Requirements

To hunt for furbearers, hunters must have a current Regular N.H. Hunting, Combination, or Archery License. **A Small Game License does not allow for the hunting of furbearers.**

Furbearer Hunting Regulations

Hunting Hours: ½ hour before sunrise to ½ hour after sunset.

There is no daily bag limit for coyote, red fox, gray fox, opossum, skunk, weasel, mink, muskrat, or raccoon.

There is no open hunting season for otter or beaver. Furbearers shall not be taken with an

air rifle. New for 2025, hunters are required to register all furbearing animals taken by hunting by completing an online registration report available at www.wildlife.nh.gov/hunting-nh/furbearer. Once the registration process is complete, hunters will receive a confirmation number that must be written or kept within their hunting license.

Coyote

- No closed season.
- **Night Hunting:** Coyotes may be hunted at night from Jan. 1 through March 31. Lights may be used, except from a motor vehicle, snowmobile, or OHRV. In towns

with special rules (page 22), coyote night hunters are restricted to permitted pistols, .17 and .22 caliber rimfire rifles, shotguns, muzzleloaders, crossbow, or bow and arrow.

- Electronic calling devices are legal.
- Written landowner permission, filed with the local conservation officer, is required to hunt coyote at night or to place bait for coyotes.
- Baiting is not permitted on ice-covered public waters.
- From the close of the bear baiting season through December 15, baiting for coyote will be restricted to the use of meat, animal parts, carrion, or fish only.

Fisher

Sealing required within 10 days of the close of season. The lower jaw of fisher must be submitted at the time of sealing. The season limit is 2 fisher.

Raccoon

Raccoon may be hunted at night. It is illegal to use a rifle or pistol larger than .22 caliber, or shot size larger than number 4 birdshot. It is illegal to take raccoons using a light from a motor vehicle or OHRV.



2025-2026 TRAPPING SEASONS

SPECIES	INCLUSIVE DATES	WILDLIFE MANAGEMENT UNITS	SEASON LIMIT
Beaver, Muskrat, Mink, Otter, Weasel	Oct. 15, 2025–Apr. 10, 2026 Nov. 1, 2025–Apr. 10, 2026	A–F G–M	Offer: 10 Other: No
Fisher	Dec. 1–Dec. 31, 2025	Statewide	2*
Fox (Red & Gray), Opossum, Skunk, Raccoon	Oct. 15–Dec. 31, 2025 Nov. 1, 2025–Jan. 15, 2026	A–F G–M	No
Coyote	Oct. 15, 2025–March 31, 2026 Nov. 1, 2025–March 31, 2026	A–F G–M	No
Bobcat, Lynx, Pine marten	CLOSED		

* The statewide bag limit is 2 fisher per trapper (combined with hunting).



Hunt Regs App

Stay Legal. Strike Smart.

Simplified Regulations

Strike Smart Journal

Poaching Reporting
Starting in January 2026

Find Regulations

State Selection
New Hampshire OR Drop a pin

Animal Selection
Turkey
Spring Turkey

Zone Selection
☒ Public ☐ Private
Conner Farm WMA

View Zone on Map

View Regulations

huntregsapp.com

GET IT ON Google Play Download on the App Store



FURBEARER TRAPPING

Trapping Licensing Requirements

Any person (regardless of age), except resident landowners while upon their own land or children under 16 years of age when accompanied by a licensee 18 years of age or over, must have a license to trap fur-bearing animals. This license can only be purchased at Fish and Game headquarters in Concord or by mail from N.H. Fish and Game Department, 11 Hazen Drive, Concord, NH 03301. Trapping Licenses expire on June 30 of each year.

No person shall be issued a license to trap unless he or she presents proof that he or she has completed a trapper education course or has previously held a N.H. license to trap within the last three years.

- **Trapping License—Resident Minor:** N.H. resident youths (under age 16) may purchase this license with proof of Trapper Education or a previous NH Trapping License issued within the previous 3 years. Resident minors shall provide a copy of their parent or legal guardian's current state issued motor vehicle driver license or state issued non-driver photo ID card which shall be used to determine residency. This license allows youth trappers to trap without adult accompaniment.
- **Nonresident Trapping Licenses:** In order to be eligible for a N.H. Trapping License, the applicant's state or province

must allow nonresidents to trap within their jurisdictions.

Persons engaged in the practice of trapping nuisance animals are required to possess a Wildlife Control Operator's License, available at Fish and Game headquarters in Concord or by mail.

General Trapping Regulations

- Snares may be used for taking beaver and otter. Snares shall only be set in water or under ice.
- All traps/snares must have the name of the person setting them, either stamped or engraved in a legible and permanent manner on the trap or on a durable tag securely affixed to the trap or snare or chain holding the trap.
- Only New Hampshire residents may trap beaver and otter during the N.H. open seasons.
- When set, all traps must be securely attached to the ground, to a fixed object, to a drag, or to a slide wire.
- Otter sealing is required within 10 days of the close of the otter season.
- Fisher sealing is required within 10 days of the close of the fisher season.
- There is no open season on bobcat, lynx, or American marten.
- No person may set, arrange, or tend any trap/snare upon any land or from the shores

of any waters of which he is not the owner or occupant unless he has signed, written permission, and until a copy is filed with the conservation officer in whose district said person is going to trap, together with a description of the land on which trapping is to be done. The only exceptions are traps/snares placed in public bodies of water as defined in RSA 271:20 and on the following named rivers: Androscoggin, Ammonoosuc, Ashuelot, Bearcamp, Contoocook, Connecticut, Cocheco, Exeter, Lamprey, Mascoma, Merrimack, Merrymeeting, Isinglass, Pemigewasset, Pine, Saco, Soucook, Suncook, and Winnepesaukee and their navigable tributaries. Navigable tributaries are those waters from the tributary's mouth to a point upstream where a person can row a boat or paddle a canoe when the water in the stream is in its ordinary condition.

- No person may set or arrange any trap in a public way, cart road, or path commonly used as a passageway by human beings or domestic animals.
- Any trapper causing injury or damage to domestic animals, with the exception of dogs at large, shall be liable to the owner. An injury to a licensed dog at large shall be reported to the town or city listed on the dog's tag, and to the owner of the dog, if known.



**With you
wherever
you go.**

**The most up-to-date
hunting regulations online!**





FURBEARER TRAPPING

- No person may set or arrange any trap/snare in or under any bridge, ditch, or drainage system, whether artificial or natural, within the limits of the right-of-way of any public highway except by special permission of the executive director.
- A trapper must visit set traps at least once each calendar day. A person trapping beaver through the ice must visit his traps at least once each 72 hours.
- Trappers may use artificial lights to facilitate checking traps. Checking traps by the use of lights from a motor vehicle is prohibited.
- While checking traps at night, no person shall have in possession a rifle, revolver, or pistol larger than a .22 caliber long rifle, air rifle larger than .25 caliber, or a shotgun with shells larger than number 4 birdshot.
- **Annual Trapper's Report due April 30:** All persons licensed to trap furbearing

animals, whether they trapped or not, are required to submit an Annual Trapper's Report by April 30 of each year.

- Fur Dealers must submit a completed "Fur Dealers' Record Book" (Furs Purchased—Form F&G 152, Furs Sold—Form F&G 152A) to N.H. Fish and Game on or before July 30 of each year. All licensees must carry on their persons a Form F&G 152 when buying the skins of furbearing animals. All forms are available from Fish and Game's Concord headquarters. Fur buyers are not required to maintain a record of deer hides bought or sold.

It Is Unlawful to:

- Disturb or interfere with the dams or houses of beaver without obtaining a special permit from the executive director or his designee, except as provided in RSA 210:9.
- Set or arrange any trap prior to the first day of the open season for trapping a species.

- Disturb the trap of another person or take a furbearing animal from the trap of another person, unless specifically authorized in writing by the owner of the trap.
- Per Fis 303.12 (a Fish and Game Administrative Rule), body gripping traps with an inside jaw spread greater than or equal to 6½ inches, measured inside the jaws perpendicular to the trap's pivoting joints, shall only be set:
 1. Five feet or more above the ground or surface of the snow (with the exception of a snowstorm during the previous 24 hours); or
 2. In water for trapping beaver or otter.
- Place a trap within 15 feet of a muskrat house, or injure or destroy the house, den or burrow used by any game or furbearing animal.
- Place a trap within 50 feet of exposed bait (see Statewide Restrictions on page 35).

Trapping on State-Managed Lands

Permits to trap on state-managed lands are issued by lottery every two years, in even years only, and are valid for two years. The next lottery will be in September 2026.

Permit forms, applications, property maps, and lists of available lands may be obtained from the Wildlife Division in Concord (603-271-2461), or downloaded from huntnh.com.



LYNX PROTECTION ZONE & TRAP RESTRICTIONS



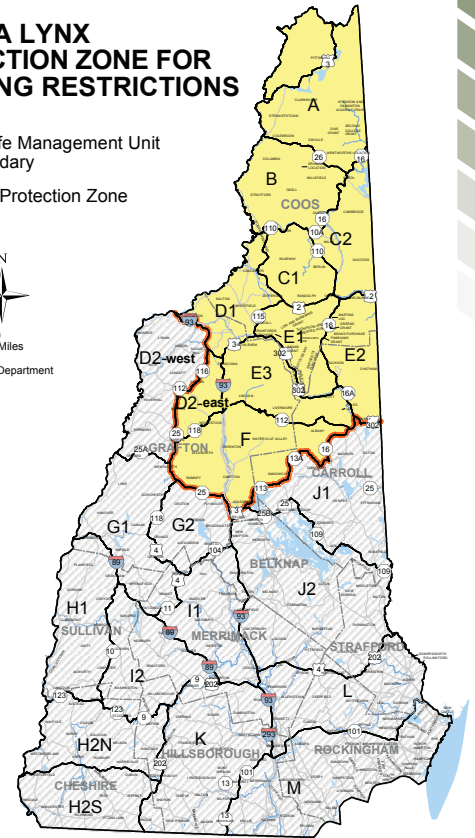
CANADA LYNX PROTECTION ZONE FOR TRAPPING RESTRICTIONS

Wildlife Management Unit boundary

Lynx Protection Zone



0 5 10 20 Miles
April 2012
NH Fish and Game Department



Canada lynx are a federally listed **Threatened Species**. There is no open season for the trapping or hunting of lynx in New Hampshire. Fish and Game biologists have confirmed the presence of reproducing lynx in northern New Hampshire. To protect the lynx, and to help N.H. trappers avoid accidentally taking lynx, Fish and Game worked with the N.H. Trappers Association to delineate a lynx protection zone in the northern and White Mountains area where special regulations are in effect.

Statewide Restrictions

- No foothold trap with auxiliary teeth added shall be allowed.
- No foothold trap with an inside jaw spread greater than 6½ inches shall be set on land.
- Body gripping traps with an inside jaw spread greater than or equal to 6½ inches shall only be set:
 - Five feet or more above the ground or surface of the snow with the exception of a snowstorm during the previous 24 hours; and
 - In water for beaver or otter.
- There is no open season for taking bobcat, American marten, or Canada lynx. Any American marten or Canada lynx trapped must be reported immediately by contacting the Fish and Game Department at 603-271-3361 on business days during the hours of 8:00 a.m. to 5:00 p.m., during weekdays or 7:00 a.m. to 7:00 p.m. on weekends, or, if

the Fish and Game Department is closed, by contacting the nearest Conservation Officer.

- Deadfalls are prohibited.
- Traps shall not be set within 50 feet of exposed bait, but may be set any distance from a covered bait (see definitions below).
 - “Exposed bait” means bait that is the body of any animal, including fish, or parts thereof, including meat, organs, viscera, bones, or any other parts of an animal, that is visible from above, but does not include meat, organs, viscera, or bones totaling 4 ounces or less, or skin, hair, or feathers 25 square inches or less, droppings, urine, or living or dead animals held in a trap as the result of lawful trapping activity.
 - “Covered bait” means bait that is the body of any animal, including fish, or parts thereof, including meat, organs, viscera, bones, or any other parts that are covered so as to not be visible from above, where cover includes, but is not limited to, brush, branches, leaves, soil, or snow and is constructed in a manner to withstand wind and normal environmental conditions. “Covered bait” includes baits less than one-half pound when placed in a dirt hole 6 inches in diameter or less at a depth of 6 inches or greater; and baits of less than 5 pounds placed on pole sets 5 or more feet above ground are also considered covered bait.

Restrictions within the “Lynx Protection Zone”

The following restrictions on traps shall apply while trapping in WMUs A, B, C1, C2, D1, D2-east, E and F:

- All foothold traps set on land must have one swivel in the chain/cable and one swivel connection to the trap;
- Body gripping traps with an inside jaw spread of 4 inches or greater and less than or equal to 5 inches which are set on the ground shall only be set as follows:
 - Set in water at all times;
 - Set under overhanging stream banks; and
 - Set as a blind set with no bait or attractant; and
- Body gripping traps with an inside jaw spread 4 inches or greater which are set off the ground shall only be set as follows:
 - Five feet or more above the ground or surface of the snow, with the exception of a snowstorm during the previous 24 hours;
 - Affixed to a leaning section of a pole or tree, no greater than 4 inches in diameter that is free of branches and angled 45 degrees or greater in its entirety;

Know the difference between lynx and bobcat AND wolf and coyote. See our brochure at wildnh.com/hunting/publications.html.

LYNX PROTECTION ZONE & TRAP RESTRICTIONS

- Excluding branch removal, the pole or tree shall not have planed or altered sides.
- The area within 4 feet of the trap shall be free of trees, poles or other objects greater than 4 inches in diameter;
- The areas within 4 feet of the trap shall be free of trees or poles that are angled less than 45 degrees to the ground at any point between the ground elevation and the elevation of the trap; and
- The area within 4 feet of the trap shall be free of banks, bluffs, rocks or immediate rise in ground elevation;
- Body gripping traps with an inside jaw spread greater than 5 inches and less than 6½ inches which are set on the ground shall only be set:
 - Recessed in the den entry of nuisance wildlife, with the den entry covered by wire mesh with openings that do not exceed 1½ inches side-to-side and wire gauge shall be 16 gauge or less or a wire diameter of 0.05 inches or greater.
 - If placed in a lynx exclusion device, as follows:
 - » The trap jaws shall be completely within the device, the trap springs may be outside of the device;
 - » The lynx exclusion device shall not have an opening greater than 6 inches by 8 inches;
- » The opening shall not be directly in front of the trap, but shall be either on the top or side of the device;
- » The trap set within the device shall be a minimum of 18 inches from the closest edge of the opening to the trap;
- » The back of the device shall be secured to withstand heavy pulling;
- » If using wire mesh with a wood box, the wire mesh shall wrap around two opposite sides of the box and be secured;
- » There shall be at least 2 attachment points for each side of the device where there is a joint, or where panels come together;
- » The exclusion device shall be constructed of wood, or wire mesh that does not exceed 1½ inch openings from side to side;
- » The wire gauge shall be 16 gauge or less or a wire diameter of 0.05 inches or greater;
- » The opening slot in the device that allows the trap springs to extend outside the device shall be no more than 7½ inches wide and a height of no more than 1½ inches; and
- » The trap shall be anchored outside of the device.

Shop Wild NH!

For the 2026 New Hampshire Wildlife Calendar visit www.wildlife.nh.gov/shop-and-support



Other Wildlife

There is no restriction in New Hampshire on the taking of woodchucks, porcupines, English sparrows, European starlings, common feral pigeons, red squirrels, and other rodents not covered in this publication. All other birds not specifically covered in this digest are protected by New Hampshire or federal law and may not be taken. For more information on nongame and endangered wildlife, look for the N.H. Wildlife Action Plan at wildnh.com.

OTHER—NONGAME WILDLIFE

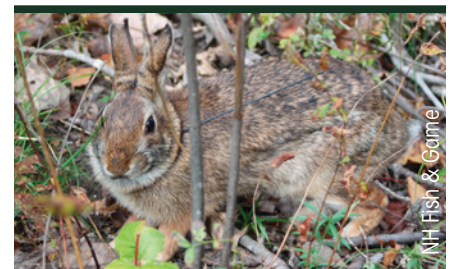
Reptiles and Amphibians

- No person shall sell native species of reptiles or amphibians, including parts or eggs thereof, except:
 - Non-living snapping turtles and bullfrogs raised outside the state which may be possessed, bought, and sold for use as food provided that with each package there shall be a bill of sale bearing the species, the weight of the package, and the place of origin; and
 - Non-living amphibians and reptiles obtained outside the state to be used for educational purposes.
- No person shall take or possess a spotted turtle, Blanding's turtle, wood turtle, Eastern box turtle, black racer, Eastern hognose snake, timber rattlesnake, marbled salamander, Fowler's toad, northern leopard frog, or any egg or part thereof.
- Importation, possession, and release of reptiles shall be in accordance with Fis Chapter 800.
- No person shall take any species of indigenous turtle from May 15 to July 15.
- Persons taking reptiles or amphibians shall not take more than 2 reptiles or 5 amphibians per day.
- The taking of amphibians and reptiles shall be only by hand capture, including the use of hand-held nets.
- Snapping turtles may only be taken if less than 6 inches or 12 to 15 inches in length, as measured along the top of the carapace.
- The possession limit of harvested reptiles and amphibians is 2 times the daily bag limit.
- Individuals may possess up to 2 each of the following native reptiles:*

— Musk turtle	— Brown snake
— Painted turtle	— Northern watersnake
— Snapping turtle	— Red-bellied snake
— Ring-necked snake	— Garter snake
— Eastern milk snake	
- Individuals may possess up to 5 each of the following native amphibians:*

— American toad	— Northern two-lined salamander
— Gray tree frog	— Spring peeper
— Spring peeper	— American bullfrog
— American bullfrog	— Red-spotted newt
— Green frog	— Northern dusky salamander
— Pickerel frog	— Eastern red-backed salamander
— Mink frog	
— Wood frog	
— Spotted salamander	

* NOTE: Although limited possession of these species is currently legal in New Hampshire, the N.H. Fish and Game Department encourages people to leave these wildlife species wild. Populations of some species, especially turtles, can be adversely affected by the removal of a small number of individuals.



NH Fish & Game

Help Protect Nongame Wildlife

When you buy your license, consider adding a donation to N.H. Fish and Game's Nongame and Endangered Wildlife Program. Work related to nongame species and their habitats helps many other wildlife species, including those you like to hunt!



Donate online at:

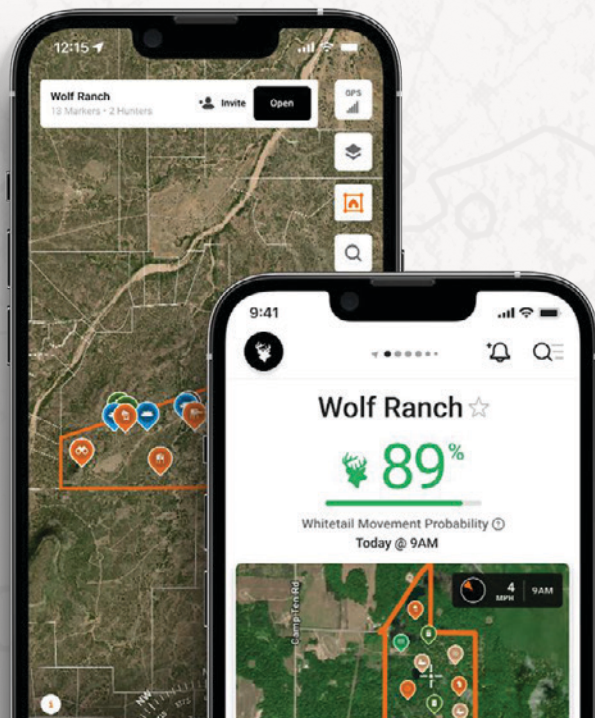
wildnh.com/nongame



THE ULTIMATE HUNTING TOOLSET

With advanced mapping and forecasting features that help you find the perfect place and time, HuntWise gives you every tool you need to scout, strategize, and execute hunts like a pro.

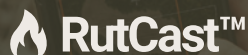
START YOUR FREE TRIAL TODAY!



ADVANCED PREDICTIONS



Your predictive guide, utilizing a proprietary algorithm for animal movement predictions to anticipate and intercept whitetail movement.



Nationwide County-by-County whitetail rut phase predictions, guiding your strategic planning for success.



Your wind guide, comparing stands and blinds based on ideal and historical winds and for optimal positioning and placement.

"If I had an app like this when I started hunting, **the amount of 'the one that got away' stories would be far less.** It's going to take years of mistakes and translate them into years of success."



John Dudley
@nockontv



HUNTER'S MARKETPLACE

Out-of-State Hunting Guides, Outfitters, Preserves



"We have hundreds of acres of the best hunting area in the east"

Experience is the Difference!
Year Round Hunting 7 Days A Week, No License Required



(570) 835-5341
www.TiogaBoarHunting.com
1552 Mann Hill Road | Tioga, PA 16946 | tiogaboarranch@gmail.com

Out-of-State Fishing Guides



www.CaptainMelTrue.com

FISHNET CHARTERS
CAPE COD - BUZZARDS BAY
Targeting all species of gamefish
Sea Bass - Stripers - Tautog






508-951-9991
capt.meltrue@gmail.com
www.captainmeltrue.com

Retailers



Morse Sporting Goods
85 Contoocook Falls Road
Hillsboro, NH 03244

Archery Pro Shop ■ 3D Course
Hand-tied flies ■ Live Bait ■ St.Croix, TFO rods
Hunting and Fishing Supplies ■ Ammo
New/Used Guns ■ Clothing/Boots
Bear, Deer and Turkey Weigh Station

603-464-3444
9-6 Monday-Saturday ■ 9-noon Sunday
www.morsesportinggoods.com



LARGEST INVENTORY OF NEW & USED GUNS IN THE GREATER KEENE AREA!

(603) 239-4032
Rte. 10, Winchester, NH 03470

Home Improvement

603-455-2014 Servicing all of New England

AMEN ROOFING
Repairs & New Installations of Metal Shingles Rubber & PVC



We specialize in providing top-quality roofing services tailored to your needs. Whether you need a new roof installation, repairs to storm-damaged roofing, or upgrades to enhance your home's appeal and value, we've got you covered!

Amenroofingrepairs.com

Wildlife Conservation

Newfound Sales Trading Post Inc.
Fishing & Bait • OHRV Reg. & Boat Reg
Guns & Ammo • Licenses • Tools
Radios & phones • Toys • Clothes

Not Hunting & Fishing Licenses and much much more

(603) 744-8658
381 Lake St. • Bristol, NH 03222



Preserve, Protect, & Conserve wildlife habitat and resources. Join TODAY! www.NHWF.org



Sunrise and Sunset

Please note that the N.H. Sunrise and Sunset times may be several minutes before or after the times shown below, which are for Concord, NH. Check local media for exact sunrise/sunset times. Daylight Savings Time has been incorporated into this chart (in **red**).

	SEPTEMBER 2025		OCTOBER 2025		NOVEMBER 2025		DECEMBER 2025		MAY 2026	
Day	Rise	Set	Rise	Set	Rise	Set	Rise	Set	Rise	Set
	AM	PM	AM	PM	AM	PM	AM	PM	AM	PM
1	6:10	7:22	6:43	6:29	7:21	5:39	6:58	4:12	5:40	7:47
2	6:11	7:21	6:45	6:27	6:22	4:37	6:59	4:12	5:39	7:48
3	6:12	7:19	6:46	6:25	6:24	4:36	7:00	4:11	5:37	7:49
4	6:14	7:17	6:47	6:23	6:25	4:35	7:01	4:11	5:36	7:50
5	6:15	7:15	6:48	6:21	6:26	4:34	7:02	4:11	5:35	7:51
6	6:16	7:14	6:49	6:20	6:27	4:32	7:03	4:11	5:33	7:52
7	6:17	7:12	6:50	6:18	6:29	4:31	7:04	4:11	5:32	7:54
8	6:18	7:10	6:52	6:16	6:30	4:30	7:05	4:11	5:31	7:55
9	6:19	7:08	6:53	6:14	6:31	4:29	7:06	4:11	5:30	7:56
10	6:20	7:06	6:54	6:13	6:33	4:28	7:07	4:11	5:28	7:57
11	6:21	7:05	6:55	6:11	6:34	4:27	7:08	4:11	5:27	7:58
12	6:22	7:03	6:56	6:09	6:35	4:26	7:09	4:11	5:26	7:59
13	6:23	7:01	6:57	6:08	6:36	4:25	7:10	4:11	5:25	8:00
14	6:25	6:59	6:59	6:06	6:38	4:24	7:10	4:11	5:24	8:01
15	6:26	6:57	7:00	6:04	6:39	4:23	7:11	4:11	5:23	8:02
16	6:27	6:56	7:01	6:03	6:40	4:22	7:12	4:12	5:22	8:04
17	6:28	6:54	7:02	6:01	6:42	4:21	7:13	4:12	5:21	8:05
18	6:29	6:52	7:03	5:59	6:43	4:20	7:13	4:12	5:20	8:06
19	6:30	6:50	7:05	5:58	6:44	4:19	7:14	4:13	5:19	8:07
20	6:31	6:48	7:06	5:56	6:45	4:18	7:14	4:13	5:18	8:08
21	6:32	6:47	7:07	5:55	6:47	4:18	7:15	4:13	5:17	8:09
22	6:33	6:45	7:08	5:53	6:48	4:17	7:15	4:14	5:16	8:10
23	6:34	6:43	7:10	5:52	6:49	4:16	7:16	4:14	5:15	8:11
24	6:36	6:41	7:11	5:50	6:50	4:15	7:16	4:15	5:14	8:12
25	6:37	6:39	7:12	5:49	6:51	4:15	7:17	4:16	5:14	8:13
26	6:38	6:37	7:13	5:47	6:53	4:14	7:17	4:16	5:13	8:14
27	6:39	6:36	7:15	5:46	6:54	4:14	7:17	4:17	5:12	8:15
28	6:40	6:34	7:16	5:44	6:55	4:13	7:18	4:18	5:12	8:15
29	6:41	6:32	7:17	5:43	6:56	4:13	7:18	4:18	5:11	8:16
30	6:42	6:30	7:18	5:41	6:57	4:12	7:18	4:19	5:10	8:17
31			7:20	5:40			7:18	4:20	5:10	8:18

*Source: sunrisesunset.com | Concord, NH



N.H. MOOSE HUNT LOTTERY



Each year, 35 lucky hunters are selected for a once-in-a-lifetime experience: the New Hampshire moose hunt, taking place **October 18–26, 2025**. These permits are awarded through a **random lottery drawing** held in June by the N.H. Fish and Game Department.

When to Apply:

Applications for the **2026** Moose Hunt Lottery will be available in **late January 2026**. Watch huntnh.com for your chance to apply online or by mail.

Cost:

Resident: \$15 | **Nonresident:** \$25

How it Works:

Moose hunting permits are offered to successful lottery applicants following a random computer-generated drawing in June. Your odds of winning improve every consecutive year you apply, thanks to a bonus point system. Permit holders may select one person of any age to join them on the moose hunt.

Moose Management:

New Hampshire has had an annual moose hunt since 1988. The availability of moose hunting permits is made possible by careful management of moose populations. While moose populations and hence permits, are down from past years, permits are issued at a

rate that should allow the moose population to grow toward regional population goals.

An ongoing research project being conducted by Fish and Game, in cooperation with the University of New Hampshire, will provide additional information to aid in moose management efforts.

More Information:

For license/permit fees, success rates by region and WMU, a photo gallery of past hunts, and Q&As on the moose hunt and the lottery, visit huntnh.com.

New Hampshire Moose Hunt Permit Auction

The Wildlife Heritage Foundation of New Hampshire auctions one moose hunting permit as part of a program to support the conservation of wildlife and natural places in N.H. The permit allows the holder to harvest one moose of either sex. All auction proceeds benefit the Wildlife Heritage Foundation of New Hampshire.

Bidder's packets become available in the spring, and bids are opened in early August. Visit nhwildlifeheritage.org or contact the Wildlife Heritage Foundation of N.H., 54 Portsmouth Street, Concord, NH 03301.

The Wildlife Heritage Foundation of New Hampshire is the official non-profit partner of the New Hampshire Fish and Game Department. The Foundation raises money to support projects such as Operation Land Share, signs at Wildlife Management Areas, and the Conservation K-9 program. Funding for the Foundation's grant program comes from individual and corporate donors, as well as the annual moose hunt permit auction.



WILDLIFE HERITAGE
FOUNDATION of NH

Wildlife Heritage Foundation of New Hampshire.

Investing in New Hampshire now, to conserve wildlife and natural areas for future generations. Contact 603-496-2778 or admin@nhwildlifeheritage.org for information, auction packet, or to make your tax-deductible donation.

nhwildlifeheritage.org

**Presenting sponsor, Discover WILD New Hampshire Day:
April 18, 2026, at N.H. Fish and Game in Concord**

N.H. Moose Hunt by the Numbers

- The largest bull moose ever taken in New Hampshire weighed in at 1,040 pounds, dressed weight, in 1993. Live weight of this moose would have been approximately 1,400 pounds. The largest cow ever taken dressed at 815 pounds.
- Greatest antler spread measurement for moose taken in New Hampshire is 68.5 inches. This bull was 9.5 years of age, had 25 points and weighed 775 pounds dressed. The antler beam diameter was 60 mm. This animal was taken in A2 in 2010.
- Moose have been taken with the use of conventional firearms and archery, handguns, muzzleloaders (including flintlocks) and the longbow.
- Typically, more than 60% of the harvest occurs in the first 3 days of the season.
- Successful hunters average 24 hours hunting and 42 hours scouting.

can-am®

DISCOVER THE 2025 OUTLANDER LINEUP

PICK THE PERFECT PACKAGE FOR YOU



MOULTONBOROUGH
7 Moultonboro Neck Road
Moultonborough, NH 03254
(603) 253-6688



HAMPSTEAD
710 Route 111
Hampstead, NH 03841
(603) 329-7810



©2024 Bombardier Recreational Products Inc. (BRP). All rights reserved. ®, ™ and the BRP logo are trademarks of BRP or its affiliates. In the USA, products are distributed by BRP US Inc. †All other trademarks are the property of their respective owners. BRP reserves the right to discontinue or change specifications, prices, designs, features, models or equipment without incurring obligation. Some models shown may include optional equipment. Products performance may vary depending on external factors. BRP recommends that all ATV-SSV drivers take a training course. See your dealer or call the ATV Safety Institute at 1-800-887-2887 (USA) or the Canadian Safety Council at 1-613-739-1535 (Canada). ATV and SSV can be hazardous to operate. Never exceed the ATV-SSV's passenger capacity. All adult model ATV are meant to be used by drivers of age 16 and older. Read the operator's guide. Follow all instructional and safety material and observe applicable laws and regulations. ATV and SSV are for off-road use only; never ride on paved surfaces or public roads. For your safety, the operator and passenger(s) must wear a helmet, eye protection and applicable protective clothing. Always remember that riding and alcohol/drugs don't mix. Never engage in stunt driving. Avoid excessive speed and be particularly careful on difficult terrain. Always ride responsibly and safely. See your authorized BRP dealer for details and visit www.can-am.brp.com. Printed in the US.



As debuted at SHOT Show 2025



BROWNING



X-Bolt 2 Medallion Rifle

This new bolt-action hunting rifle features a Grade III walnut stock with rosewood caps and a gloss finish, gloss blued receiver with scroll engraving, and sporter-weight barrel with radial muzzle brake.



X-Bolt 2 Speed Dark Maple Rifle

Features a stabilized dark maple stock with an oil finish. Redesigned receiver and bolt. Fluted sporter-weight barrel with radial muzzle brake. Durable Tungsten Cerakote finish on the barreled action.



WINCHESTER

REPEATING ARMS



SXP Hunter - TrueTimber VSX Shotgun

Reliable pump shotgun for duck and goose hunting. Features a versatile TrueTimber® VSX camouflage finish. Inflex recoil pad. Wear-resistant chrome-plated chamber and bore. Available in 12 and 20 gauge.



SXP Hybrid Hunter Camo Shotgun

Dipped camo stock, Perma-Cote FDE finish on barrel and receiver, back-bored barrel, Invector-Plus Interchangeable Choke Tube System, hard chrome bore and chamber, TRUGLO fiber-optic front, and more. 12 and 20 gauge.

**Check out our complete line of
Browning & Winchester Firearms & Accessories!**



\$25  FF*
**your in-store purchase
of \$150 or more!**

Valid thru August 31, 2026

Kittery Trading Post / Rte 1 Kittery, ME / 888-587-6246 / ktp.com

*NON-SALE, IN-STOCK ITEMS ONLY. Must present coupon for redemption.

Excludes gift cards, non-merchandise items, previous purchases, special orders. Not valid on boats, SUPs, racks, bikes, firearms, bows, electronics, trolling motors, products by Asolo, Avet, Brooks, Canada Goose, Carhartt, Chaco, Dansko, Dr. Martens, G. Loomis, Habitat, Hoka, Hoyt, Life is Good, Mathews, Megabass, Merrell, Mountain Hardwear, New Balance, Oakley, Patagonia, Pura Vida, Randall Made Knives, Redington, RIO, Sage, Shimano, St. Croix, Taos, The North Face, UGG, Under Armour or Van Staal. No copies. One per customer. Can't combine with another offer. No cash value.

Save 20% Online!
Visit ktp.com/NHHUNT
for details

NH2026

KITTERY TRADING POST

